



SZABO SCANDIC

Part of Europa Biosite

Produktinformation



Forschungsprodukte & Biochemikalien



Zellkultur & Verbrauchsmaterial



Diagnostik & molekulare Diagnostik



Laborgeräte & Service

Weitere Information auf den folgenden Seiten!
See the following pages for more information!



Lieferung & Zahlungsart

siehe unsere [Liefer- und Versandbedingungen](#)

Zuschläge

- Mindermengenzuschlag
- Trockeneiszuschlag
- Gefahrgutzuschlag
- Expressversand

SZABO-SCANDIC HandelsgmbH

Quellenstraße 110, A-1100 Wien

T. +43(0)1 489 3961-0

F. +43(0)1 489 3961-7

mail@szabo-scandic.com

www.szabo-scandic.com

[linkedin.com/company/szaboscandic](https://www.linkedin.com/company/szaboscandic) 

Japanese encephalitis virus NS3 antibody [HL2472]

Cat. No. GTX638821

Host	Rabbit
Clonality	Monoclonal
Isotype	IgG
Application	WB, ICC/IF
Reactivity	Japanese encephalitis virus

Package
100 µl, 25 µl

APPLICATION

Application Note

*Optimal dilutions/concentrations should be determined by the researcher.

Suggested dilution	Recommended dilution
WB	Assay dependent
ICC/IF	1:100-1:1000

Not tested in other applications.

Product Note

This antibody is specific for JEV virus NS3 protein, and it does not cross-react with NS3 protein of ZIKV, DENV-1, DENV-2, DENV-3, and DENV-4.

PROPERTIES

Form	Liquid
Buffer	PBS
Preservative	No preservative
Storage	Store as concentrated solution. Centrifuge briefly prior to opening vial. For short-term storage (1-2 weeks), store at 4°C. For long-term storage, aliquot and store at -20°C or below. Avoid multiple freeze-thaw cycles.
Concentration	1 mg/ml (Please refer to the vial label for the specific concentration.)
Immunogen	Recombinant fragment of Japanese encephalitis virus NS3. (strain Jaovars982)
Purification	Affinity purified by Protein A.
Conjugation	Unconjugated

Note

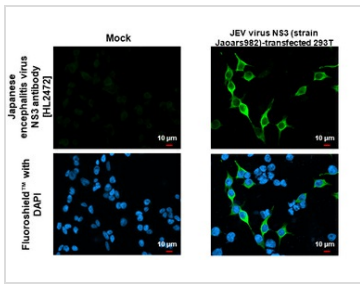
For laboratory research use only. Not for any clinical, therapeutic, or diagnostic use in humans or animals. Not for animal or human consumption.

Purchasers shall not, and agree not to enable third parties to, analyze, copy, reverse engineer or otherwise attempt to determine the structure or sequence of the product.



For full product information, images and publications, please visit our [website](#).

DATA IMAGES



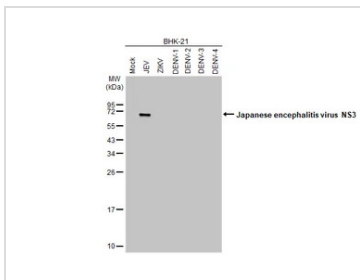
GTX638821 ICC/IF Image

Japanese encephalitis virus NS3 antibody [HL2472] detects Japanese encephalitis virus NS3 protein by immunofluorescent analysis.

Sample: Mock and transfected 293T cells were fixed in 4% paraformaldehyde at RT for 15 min.

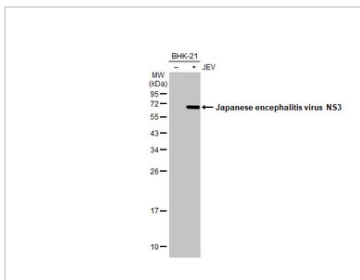
Green: Japanese encephalitis virus NS3 stained by Japanese encephalitis virus NS3 antibody [HL2472] (GTX638821) diluted at 1:500.

Blue: Fluoroshield with DAPI (GTX30920).



GTX638821 WB Image

Non-infected and infected BHK-21 whole cell extracts were separated by 12% SDS-PAGE, and the membrane was blotted with Japanese encephalitis virus NS3 antibody [HL2472] (GTX638821) diluted at 1:1000. The HRP-conjugated anti-rabbit IgG antibody (GTX213110-01) was used to detect the primary antibody.



GTX638821 WB Image

Non-infected (-) and infected (+) BHK-21 whole cell extracts (30 μg) were separated by 12% SDS-PAGE, and the membrane was blotted with Japanese encephalitis virus NS3 antibody [HL2472] (GTX638821) diluted at 1:1000. The HRP-conjugated anti-rabbit IgG antibody (GTX213110-01) was used to detect the primary antibody.



For full product information, images and publications, please visit our [website](#).