



# SZABO SCANDIC

Part of Europa Biosite

## Produktinformation



Forschungsprodukte & Biochemikalien



Zellkultur & Verbrauchsmaterial



Diagnostik & molekulare Diagnostik



Laborgeräte & Service

Weitere Information auf den folgenden Seiten!  
See the following pages for more information!



### Lieferung & Zahlungsart

siehe unsere [Liefer- und Versandbedingungen](#)

### Zuschläge

- Mindermengenzuschlag
- Trockeneiszuschlag
- Gefahrgutzuschlag
- Expressversand

### SZABO-SCANDIC HandelsgmbH

Quellenstraße 110, A-1100 Wien

T. +43(0)1 489 3961-0

F. +43(0)1 489 3961-7

[mail@szabo-scandic.com](mailto:mail@szabo-scandic.com)

[www.szabo-scandic.com](http://www.szabo-scandic.com)

[linkedin.com/company/szaboscandic](https://www.linkedin.com/company/szaboscandic) 

## Tau (phospho Thr181) antibody [HL2498]

**Cat. No. GTX638856**

<b>Host</b>	Rabbit
<b>Clonality</b>	Monoclonal
<b>Isotype</b>	IgG
<b>Application</b>	WB, IHC-P, ELISA, Sandwich ELISA
<b>Reactivity</b>	Human, Mouse

**Package**  
100 µl, 25 µl

## APPLICATION

**Application Note**

\*Optimal dilutions/concentrations should be determined by the researcher.

Suggested dilution	Recommended dilution
WB	1:500-1:3000
IHC-P	Assay dependent
ELISA	Assay dependent
Sandwich ELISA	Assay dependent

**Note : Capture : GTX638855, Detection : GTX638856 or Capture : GTX638856, Detection : GTX638855**  
**The detection antibody requires HRP conjugation. Please contact us for the conjugation service.**

Not tested in other applications.

**Calculated MW** 79 kDa. ([Note](#))

## PROPERTIES

<b>Form</b>	Liquid
<b>Buffer</b>	PBS
<b>Preservative</b>	No preservative
<b>Storage</b>	Store as concentrated solution. Centrifuge briefly prior to opening vial. For short-term storage (1-2 weeks), store at 4°C. For long-term storage, aliquot and store at -20°C or below. Avoid multiple freeze-thaw cycles.
<b>Concentration</b>	1 mg/ml (Please refer to the vial label for the specific concentration.)
<b>Immunogen</b>	Carrier-protein conjugated synthetic peptide surrounding phospho Thr181 of human Tau. The exact sequence is proprietary.
<b>Purification</b>	Affinity purified by Protein A.
<b>Conjugation</b>	Unconjugated



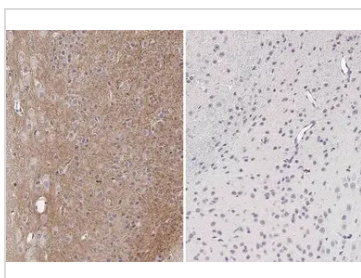
For full product information, images and publications, please visit our [website](#).

For laboratory research use only. Not for any clinical, therapeutic, or diagnostic use in humans or animals. Not for animal or human consumption.

## Note

Purchasers shall not, and agree not to enable third parties to, analyze, copy, reverse engineer or otherwise attempt to determine the structure or sequence of the product.

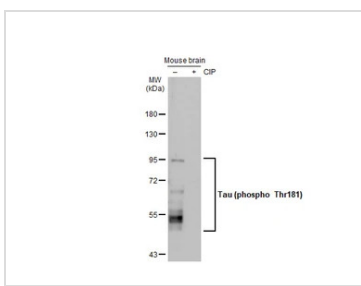
## DATA IMAGES



### GTX638856 IHC-P Image

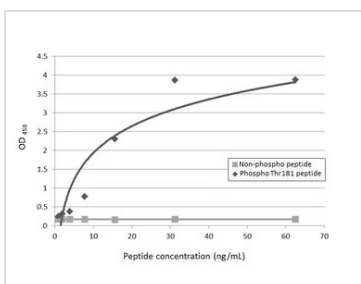
Tau (phospho Thr181) antibody [HL2498] detects Tau (phospho Thr181) protein at cytoplasm by immunohistochemical analysis in the presence of control peptide (left) or antigen-specific peptide (right).  
Sample: Paraffin-embedded mouse brain.

Tau (phospho Thr181) stained by Tau (phospho Thr181) antibody [HL2498] (GTX638856) diluted at 1:100.  
Antigen Retrieval: Citrate buffer, pH 6.0, 15 min



### GTX638856 WB Image

Untreated (-) and treated (+) Mouse tissue extract (50 µg) were separated by 7.5% SDS-PAGE, and the membrane was blotted with Tau (phospho Thr181) antibody [HL2498] (GTX638856) diluted at 1:1000. The HRP-conjugated anti-rabbit IgG antibody (GTX213110-01) was used to detect the primary antibody.



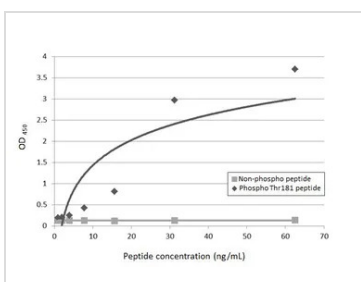
### GTX638856 ELISA Image

Sandwich ELISA detection of Tau peptide and Tau (phospho Thr181) peptide using antibodies as below.

**Capture:** Tau (phospho Thr181) antibody [HL2497] (GTX638855) (5 µg/mL)

**Detection:** HRP-conjugated Tau (phospho Thr181) antibody [HL2498] (GTX638856) (1 µg/mL)

Please notice that GTX638856 needs to be conjugated to HRP to function as the detection antibody when paired with GTX638855. Please contact us for custom HRP-conjugated antibody.



### GTX638856 ELISA Image

Sandwich ELISA detection of Tau peptide and Tau (phospho Thr181) peptide using antibodies as below.

**Capture:** Tau (phospho Thr181) antibody [HL2498] (GTX638856) (5 µg/mL)

**Detection:** HRP-conjugated Tau (phospho Thr181) antibody [HL2497] (GTX638855) (1 µg/mL)

Please notice that GTX638855 needs to be conjugated to HRP to function as the detection antibody when paired with GTX638856. Please contact us for custom HRP-conjugated antibody.



For full product information, images and publications, please visit our [website](#).