



SZABO SCANDIC

Part of Europa Biosite

Produktinformation



Forschungsprodukte & Biochemikalien



Zellkultur & Verbrauchsmaterial



Diagnostik & molekulare Diagnostik



Laborgeräte & Service

Weitere Information auf den folgenden Seiten!
See the following pages for more information!



Lieferung & Zahlungsart

siehe unsere [Liefer- und Versandbedingungen](#)

Zuschläge

- Mindermengenzuschlag
- Trockeneiszuschlag
- Gefahrgutzuschlag
- Expressversand

SZABO-SCANDIC HandelsgmbH

Quellenstraße 110, A-1100 Wien

T. +43(0)1 489 3961-0

F. +43(0)1 489 3961-7

mail@szabo-scandic.com

www.szabo-scandic.com

[linkedin.com/company/szaboscandic](https://www.linkedin.com/company/szaboscandic) 

Human Papillomavirus type 18 E7 antibody [HL2522]

Cat. No. GTX638883

Host	Rabbit
Clonality	Monoclonal
Isotype	IgG
Application	WB, ELISA, Lateral Flow
Reactivity	Human papillomavirus type 18

Package
100 µl, 25 µl

APPLICATION

Application Note

*Optimal dilutions/concentrations should be determined by the researcher.

Suggested dilution	Recommended dilution
WB	1:500-1:3000
ELISA	Assay dependent
Lateral Flow	Assay dependent

Note : Capture : GTX638883, Detection : GTX634337**Capture : GTX638883, Detection : GTX634337 or Capture : GTX634337, Detection : GTX638883.**

Not tested in other applications.

Product Note

This antibody is specific for Human Papillomavirus type 18 E7 protein, and it does not cross-react with Human Papillomavirus type 16 E7 protein.

PROPERTIES

Form	Liquid
Buffer	PBS
Preservative	No preservative
Storage	Store as concentrated solution. Centrifuge briefly prior to opening vial. For short-term storage (1-2 weeks), store at 4°C. For long-term storage, aliquot and store at -20°C or below. Avoid multiple freeze-thaw cycles.
Concentration	1 mg/ml (Please refer to the vial label for the specific concentration.)
Immunogen	Full length Human Papillomavirus type 18 E7.
Purification	Affinity purified by Protein A.
Conjugation	Unconjugated

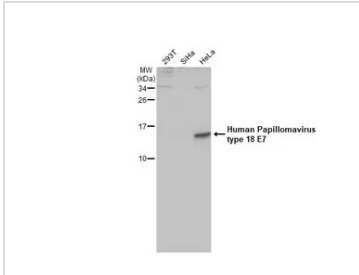


For full product information, images and publications, please visit our [website](#).

For laboratory research use only. Not for any clinical, therapeutic, or diagnostic use in humans or animals. Not for animal or human consumption.

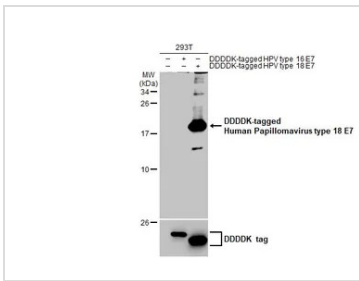
Note
Purchasers shall not, and agree not to enable third parties to, analyze, copy, reverse engineer or otherwise attempt to determine the structure or sequence of the product.

DATA IMAGES



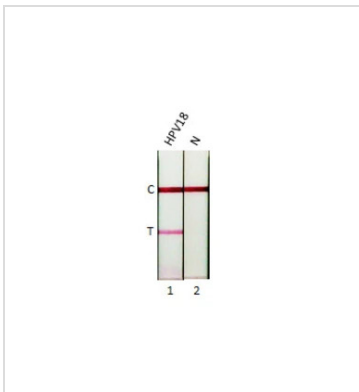
GTX638883 WB Image

Various whole cell extracts (30 µg) were separated by 15% SDS-PAGE, and the membrane was blotted with Human Papillomavirus type 18 E7 antibody [HL2522] (GTX638883) diluted at 1:1000. The HRP-conjugated anti-rabbit IgG antibody (GTX213110-01) was used to detect the primary antibody.



GTX638883 WB Image

Non-transfected (-) and transfected (+) 293T whole cell extracts (30 µg) were separated by 15% SDS-PAGE, and the membrane was blotted with Human Papillomavirus type 18 E7 antibody [HL2522] (GTX638883) diluted at 1:1000. The HRP-conjugated anti-rabbit IgG antibody (GTX213110-01) was used to detect the primary antibody.



GTX638883 Lateral Flow Image

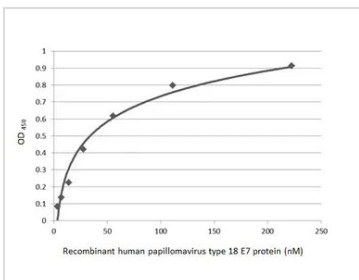
Detection of Human Papillomavirus type 18 E7 protein by lateral flow assay using the monoclonal antibody pair.

Capture: Human Papillomavirus type 18 E7 antibody (GTX638883 [HL2522])

Detection: Human Papillomavirus type 18 E7 antibody (GTX634337 [GT881])

Samples (20 ng) :

- Human Papilloma virus type 18 E7 protein (GTX133412-pro)
- Lysis buffer



GTX638883 ELISA Image

Sandwich ELISA detection of recombinant Human Papillomavirus type 18 E7 protein, His tag (GTX133412-pro) using antibodies as below.

Capture: Human Papillomavirus type 18 E7 antibody [HL2522] (GTX638883) (5 µg/mL)

Detection: Human Papillomavirus type 18 E7 antibody [GT881] (GTX634337) (1 µg/mL)



For full product information, images and publications, please visit our [website](#).