



SZABO SCANDIC

Part of Europa Biosite

Produktinformation



Forschungsprodukte & Biochemikalien



Zellkultur & Verbrauchsmaterial



Diagnostik & molekulare Diagnostik



Laborgeräte & Service

Weitere Information auf den folgenden Seiten!
See the following pages for more information!



Lieferung & Zahlungsart

siehe unsere [Liefer- und Versandbedingungen](#)

Zuschläge

- Mindermengenzuschlag
- Trockeneiszuschlag
- Gefahrgutzuschlag
- Expressversand

SZABO-SCANDIC HandelsgmbH

Quellenstraße 110, A-1100 Wien

T. +43(0)1 489 3961-0

F. +43(0)1 489 3961-7

mail@szabo-scandic.com

www.szabo-scandic.com

[linkedin.com/company/szaboscandic](https://www.linkedin.com/company/szaboscandic) 

ADAMTSL2 antibody [HL2616]

Cat. No. GTX639070

Host	Rabbit
Clonality	Monoclonal
Isotype	IgG
Application	WB, IHC-P
Reactivity	Human, Mouse, Rat

Package
100 µl, 25 µl

APPLICATION

Application Note

*Optimal dilutions/concentrations should be determined by the researcher.

Suggested dilution	Recommended dilution
WB	1:500-1:3000
IHC-P	Assay dependent

Not tested in other applications.

Calculated MW 105 kDa. ([Note](#))

PROPERTIES

Form	Liquid
Buffer	PBS
Preservative	No preservative
Storage	Store as concentrated solution. Centrifuge briefly prior to opening vial. For short-term storage (1-2 weeks), store at 4°C. For long-term storage, aliquot and store at -20°C or below. Avoid multiple freeze-thaw cycles.
Concentration	1 mg/ml (Please refer to the vial label for the specific concentration.)
Immunogen	Recombinant fragment of human ADAMTSL2
Purification	Affinity purified by Protein A.
Conjugation	Unconjugated

Note

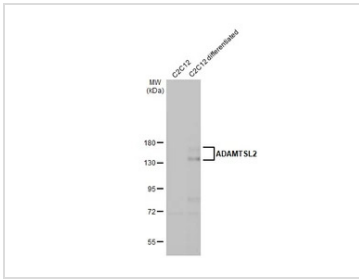
For laboratory research use only. Not for any clinical, therapeutic, or diagnostic use in humans or animals. Not for animal or human consumption.

Purchasers shall not, and agree not to enable third parties to, analyze, copy, reverse engineer or otherwise attempt to determine the structure or sequence of the product.



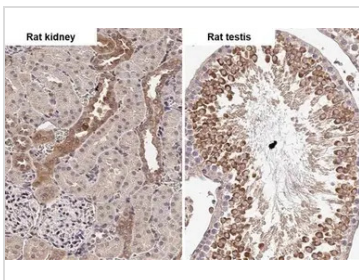
For full product information, images and publications, please visit our [website](#).

DATA IMAGES



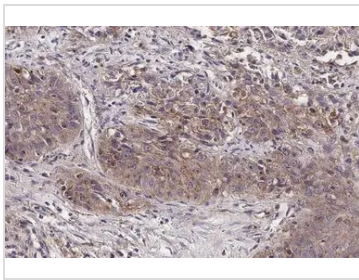
GTX639070 WB Image

C2C12 whole cell and differentiated (30 µg) were separated by 7.5% SDS-PAGE, and the membrane was blotted with ADAMTSL2 antibody [HL2616] (GTX639070) diluted at 1:1000. The HRP-conjugated anti-rabbit IgG antibody (GTX213110-01) was used to detect the primary antibody, and the signal was developed with Trident ECL plus-Enhanced.



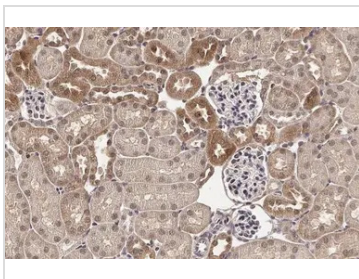
GTX639070 IHC-P Image

ADAMTSL2 antibody [HL2616] detects ADAMTSL2 protein by immunohistochemical analysis. Sample: Paraffin-embedded rat tissues. ADAMTSL2 stained by ADAMTSL2 antibody [HL2616] (GTX639070) diluted at 1:100. Antigen Retrieval: Citrate buffer, pH 6.0, 15 min



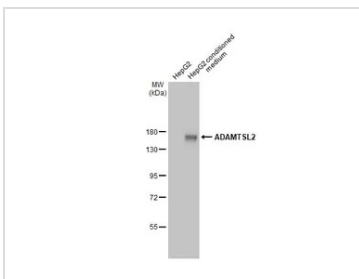
GTX639070 IHC-P Image

ADAMTSL2 antibody [HL2616] detects secreted ADAMTSL2 protein by immunohistochemical analysis. Sample: Paraffin-embedded human lung cancer. ADAMTSL2 stained by ADAMTSL2 antibody [HL2616] (GTX639070) diluted at 1:100. Antigen Retrieval: Citrate buffer, pH 6.0, 15 min



GTX639070 IHC-P Image

ADAMTSL2 antibody [HL2616] detects secreted ADAMTSL2 protein by immunohistochemical analysis. Sample: Paraffin-embedded mouse kidney. ADAMTSL2 stained by ADAMTSL2 antibody [HL2616] (GTX639070) diluted at 1:100. Antigen Retrieval: Citrate buffer, pH 6.0, 15 min



GTX639070 WB Image

HepG2 whole cell extract and conditioned medium (30 µg) were separated by 7.5% SDS-PAGE, and the membrane was blotted with ADAMTSL2 antibody [HL2616] (GTX639070) diluted at 1:1000. The HRP-conjugated anti-rabbit IgG antibody (GTX213110-01) was used to detect the primary antibody.



For full product information, images and publications, please visit our [website](#).