



# SZABO SCANDIC

Part of Europa Biosite

## Produktinformation



Forschungsprodukte & Biochemikalien



Zellkultur & Verbrauchsmaterial



Diagnostik & molekulare Diagnostik



Laborgeräte & Service

Weitere Information auf den folgenden Seiten!  
See the following pages for more information!



### Lieferung & Zahlungsart

siehe unsere [Liefer- und Versandbedingungen](#)

### Zuschläge

- Mindermengenzuschlag
- Trockeneiszuschlag
- Gefahrgutzuschlag
- Expressversand

### SZABO-SCANDIC HandelsgmbH

Quellenstraße 110, A-1100 Wien

T. +43(0)1 489 3961-0

F. +43(0)1 489 3961-7

[mail@szabo-scandic.com](mailto:mail@szabo-scandic.com)

[www.szabo-scandic.com](http://www.szabo-scandic.com)

[linkedin.com/company/szaboscandic](https://www.linkedin.com/company/szaboscandic) 

## FPRL1 antibody [HL2664]

Cat. No. GTX639328

Host	Rabbit
Clonality	Monoclonal
Isotype	IgG
Application	WB, ICC/IF, IHC-P
Reactivity	Human, Mouse

Package  
100 µl, 25 µl

## APPLICATION

## Application Note

\*Optimal dilutions/concentrations should be determined by the researcher.

Suggested dilution	Recommended dilution
WB	1:500-1:3000
ICC/IF	Assay dependent
IHC-P	Assay dependent

Not tested in other applications.

**Calculated MW** 39 kDa. ([Note](#))

**Product Note** This antibody was raised against human FPRL1 Extracellular domain.

## PROPERTIES

Form	Liquid
Buffer	PBS
Preservative	No preservative
Storage	Store as concentrated solution. Centrifuge briefly prior to opening vial. For short-term storage (1-2 weeks), store at 4°C. For long-term storage, aliquot and store at -20°C or below. Avoid multiple freeze-thaw cycles.
Concentration	1 mg/ml (Please refer to the vial label for the specific concentration.)
Immunogen	Recombinant protein encompassing a sequence within the Extracellular domain of human FPRL1. The exact sequence is proprietary.
Purification	Affinity purified by Protein A.
Conjugation	Unconjugated

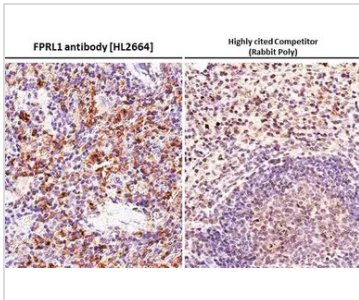


For full product information, images and publications, please visit our [website](#).

For laboratory research use only. Not for any clinical, therapeutic, or diagnostic use in humans or animals. Not for animal or human consumption.

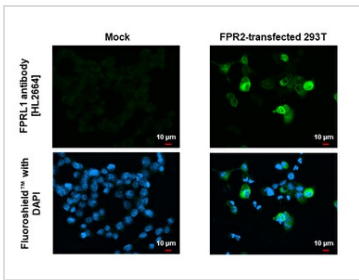
**Note**  
Purchasers shall not, and agree not to enable third parties to, analyze, copy, reverse engineer or otherwise attempt to determine the structure or sequence of the product.

DATA IMAGES



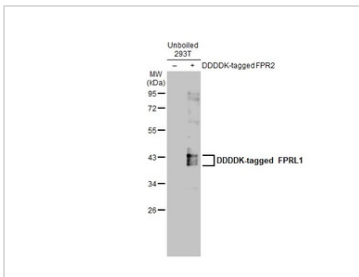
**GTX639328 IHC-P Image**

FPRL1 antibody [HL2664] detects FPRL1 protein at cell membrane by immunohistochemical analysis.  
Sample: Paraffin-embedded mouse spleen.  
FPRL1 stained by FPRL1 antibody [HL2664] (GTX639328) diluted at 1:200 and competitor's antibody (NLS1878) diluted at 1:200.  
Antigen Retrieval: Citrate buffer, pH 6.0, 15 min  
\*Competitor's antibody is not affiliated with GeneTex and does not endorse this product.



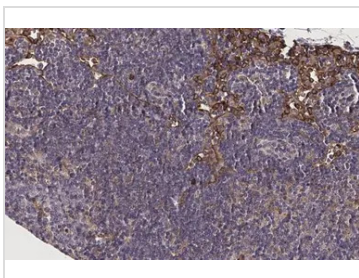
**GTX639328 ICC/IF Image**

FPRL1 antibody [HL2664] detects FPRL1 protein by immunofluorescent analysis.  
Sample: Mock and transfected 293T cells were fixed in ice-cold MeOH for 5 min.  
Green: FPRL1 stained by FPRL1 antibody [HL2664] (GTX639328) diluted at 1:500.  
Blue: Fluoroshield with DAPI (GTX30920).



**GTX639328 WB Image**

Non-transfected (-) and transfected (+) Unboiled 293T whole cell extracts (30 µg) were separated by 10% SDS-PAGE, and the membrane was blotted with FPRL1 antibody [HL2664] (GTX639328) diluted at 1:1000. The HRP-conjugated anti-rabbit IgG antibody (GTX213110-01) was used to detect the primary antibody.



**GTX639328 IHC-P Image**

FPRL1 antibody [HL2664] detects FPRL1 protein at cell membrane by immunohistochemical analysis.  
Sample: Paraffin-embedded mouse spleen.  
FPRL1 stained by FPRL1 antibody [HL2664] (GTX639328) diluted at 1:100.  
Antigen Retrieval: Citrate buffer, pH 6.0, 15 min



For full product information, images and publications, please visit our [website](#).