



# SZABO SCANDIC

Part of Europa Biosite

## Produktinformation



Forschungsprodukte & Biochemikalien



Zellkultur & Verbrauchsmaterial



Diagnostik & molekulare Diagnostik



Laborgeräte & Service

Weitere Information auf den folgenden Seiten!  
See the following pages for more information!



### Lieferung & Zahlungsart

siehe unsere [Liefer- und Versandbedingungen](#)

### Zuschläge

- Mindermengenzuschlag
- Trockeneiszuschlag
- Gefahrgutzuschlag
- Expressversand

### SZABO-SCANDIC HandelsgmbH

Quellenstraße 110, A-1100 Wien

T. +43(0)1 489 3961-0

F. +43(0)1 489 3961-7

[mail@szabo-scandic.com](mailto:mail@szabo-scandic.com)

[www.szabo-scandic.com](http://www.szabo-scandic.com)

[linkedin.com/company/szaboscandic](https://www.linkedin.com/company/szaboscandic) 

## Vasa antibody [HL2485-MS]

**Cat. No. GTX639347**

<b>Host</b>	Mouse
<b>Clonality</b>	Monoclonal
<b>Isotype</b>	IgG
<b>Application</b>	IHC-Wm
<b>Reactivity</b>	Zebrafish

**Package**  
100 µl, 25 µl

## APPLICATION

**Application Note**

\*Optimal dilutions/concentrations should be determined by the researcher.

Suggested dilution	Recommended dilution
IHC-Wm	Assay dependent

Not tested in other applications.

## PROPERTIES

<b>Form</b>	Liquid
<b>Buffer</b>	PBS
<b>Preservative</b>	No preservative
<b>Storage</b>	Store as concentrated solution. Centrifuge briefly prior to opening vial. For short-term storage (1-2 weeks), store at 4°C. For long-term storage, aliquot and store at -20°C or below. Avoid multiple freeze-thaw cycles.
<b>Concentration</b>	1 mg/ml (Please refer to the vial label for the specific concentration.)
<b>Immunogen</b>	Recombinant fragment of zebrafish Vasa
<b>Purification</b>	Affinity purified by Protein A.
<b>Conjugation</b>	Unconjugated

**Note**

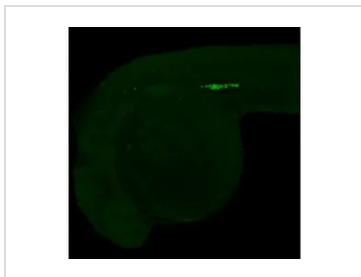
For laboratory research use only. Not for any clinical, therapeutic, or diagnostic use in humans or animals. Not for animal or human consumption.

Purchasers shall not, and agree not to enable third parties to, analyze, copy, reverse engineer or otherwise attempt to determine the structure or sequence of the product.



For full product information, images and publications, please visit our [website](#).

## DATA IMAGES

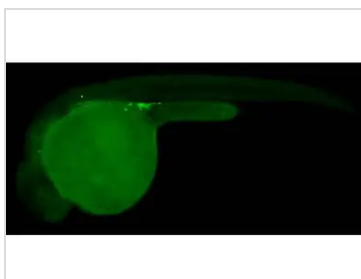
**GTX639347 IHC-Wm Image**

Vasa antibody [HL2485-MS] detects Vasa protein on whole mount zebrafish by immunohistochemical analysis.

Sample: Paraformaldehyde-fixed 1 day-post-fertilization zebrafish embryo.

Green: Vasa stained by Vasa antibody [HL2485-MS] (GTX639347) diluted at 1:100.

Antigen Retrieval: Tris-HCl buffer, pH 9.0, 20 min at 70°C

**GTX639347 IHC-Wm Image**

Vasa antibody [HL2485-MS] detects Vasa protein on whole mount zebrafish by immunohistochemical analysis.

Sample: Paraformaldehyde-fixed 1 day-post-fertilization zebrafish embryo.

Green: Vasa stained by Vasa antibody [HL2485-MS] (GTX639347) diluted at 1:50.

Antigen Retrieval: Tris-HCl buffer, pH 9.0, 20 min at 70°C



For full product information, images and publications, please visit our [website](#).