



SZABO SCANDIC

Part of Europa Biosite

Produktinformation



Forschungsprodukte & Biochemikalien



Zellkultur & Verbrauchsmaterial



Diagnostik & molekulare Diagnostik



Laborgeräte & Service

Weitere Information auf den folgenden Seiten!
See the following pages for more information!



Lieferung & Zahlungsart

siehe unsere [Liefer- und Versandbedingungen](#)

Zuschläge

- Mindermengenzuschlag
- Trockeneiszuschlag
- Gefahrgutzuschlag
- Expressversand

SZABO-SCANDIC HandelsgmbH

Quellenstraße 110, A-1100 Wien

T. +43(0)1 489 3961-0

F. +43(0)1 489 3961-7

mail@szabo-scandic.com

www.szabo-scandic.com

[linkedin.com/company/szaboscandic](https://www.linkedin.com/company/szaboscandic) 

CTLA4 antibody [HL2732]

Cat. No. GTX639560

Host	Rabbit
Clonality	Monoclonal
Isotype	IgG
Application	WB, IHC-P
Reactivity	Human, Mouse, Rat

Package
100 µl, 25 µl

APPLICATION

Application Note

*Optimal dilutions/concentrations should be determined by the researcher.

Suggested dilution	Recommended dilution
WB	Assay dependent
IHC-P	1:100-1:1000

Not tested in other applications.

Calculated MW 25 kDa. ([Note](#))

PROPERTIES

Form	Liquid
Buffer	PBS
Preservative	No preservative
Storage	Store as concentrated solution. Centrifuge briefly prior to opening vial. For short-term storage (1-2 weeks), store at 4°C. For long-term storage, aliquot and store at -20°C or below. Avoid multiple freeze-thaw cycles.
Concentration	1 mg/ml (Please refer to the vial label for the specific concentration.)
Immunogen	Recombinant fragment of mouse CTLA4.
Purification	Affinity purified by Protein A.
Conjugation	Unconjugated

Note

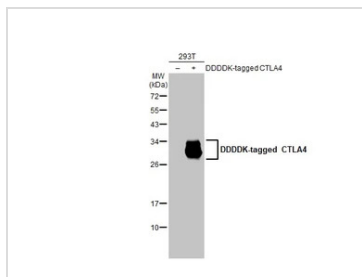
For laboratory research use only. Not for any clinical, therapeutic, or diagnostic use in humans or animals. Not for animal or human consumption.

Purchasers shall not, and agree not to enable third parties to, analyze, copy, reverse engineer or otherwise attempt to determine the structure or sequence of the product.

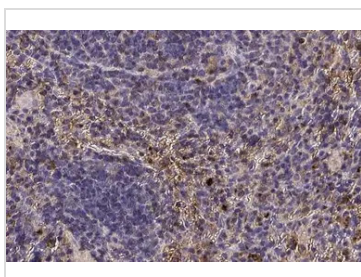


For full product information, images and publications, please visit our [website](#).

DATA IMAGES

**GTX639560 WB Image**

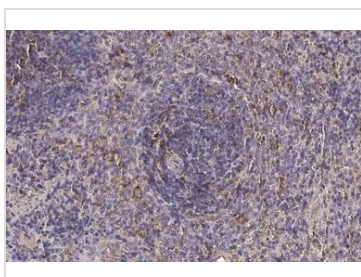
Non-transfected (-) and transfected (+) 293T whole cell extracts (30 µg) were separated by 12% SDS-PAGE, and the membrane was blotted with CTLA4 antibody [HL2732] (GTX639560) diluted at 1:5000. The HRP-conjugated anti-rabbit IgG antibody (GTX213110-01) was used to detect the primary antibody.

**GTX639560 IHC-P Image**

CTLA4 antibody [HL2732] detects CTLA4 protein at cell membrane by immunohistochemical analysis. Sample: Paraffin-embedded mouse spleen.

CTLA4 stained by CTLA4 antibody [HL2732] (GTX639560) diluted at 1:300.

Antigen Retrieval: Citrate buffer, pH 6.0, 15 min

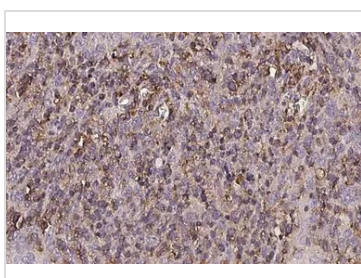
**GTX639560 IHC-P Image**

CTLA4 antibody [HL2732] detects CTLA4 protein at cell membrane by immunohistochemical analysis.

Sample: Paraffin-embedded rat spleen.

CTLA4 stained by CTLA4 antibody [HL2732] (GTX639560) diluted at 1:100.

Antigen Retrieval: Citrate buffer, pH 6.0, 15 min

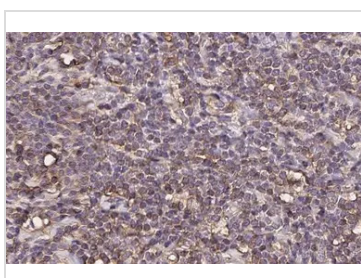
**GTX639560 IHC-P Image**

CTLA4 antibody [HL2732] detects CTLA4 protein by immunohistochemical analysis.

Sample: Paraffin-embedded human spleen.

CTLA4 stained by CTLA4 antibody [HL2732] (GTX639560) diluted at 1:500.

Antigen Retrieval: Citrate buffer, pH 6.0, 15 min

**GTX639560 IHC-P Image**

CTLA4 antibody [HL2732] detects CTLA4 protein by immunohistochemical analysis.

Sample: Paraffin-embedded human Hodgkin's lymphoma.

CTLA4 stained by CTLA4 antibody [HL2732] (GTX639560) diluted at 1:500.

Antigen Retrieval: Citrate buffer, pH 6.0, 15 min



For full product information, images and publications, please visit our [website](#).