



# SZABO SCANDIC

Part of Europa Biosite

## Produktinformation



Forschungsprodukte & Biochemikalien



Zellkultur & Verbrauchsmaterial



Diagnostik & molekulare Diagnostik



Laborgeräte & Service

Weitere Information auf den folgenden Seiten!  
See the following pages for more information!



### Lieferung & Zahlungsart

siehe unsere [Liefer- und Versandbedingungen](#)

### Zuschläge

- Mindermengenzuschlag
- Trockeneiszuschlag
- Gefahrgutzuschlag
- Expressversand

### SZABO-SCANDIC HandelsgmbH

Quellenstraße 110, A-1100 Wien

T. +43(0)1 489 3961-0

F. +43(0)1 489 3961-7

[mail@szabo-scandic.com](mailto:mail@szabo-scandic.com)

[www.szabo-scandic.com](http://www.szabo-scandic.com)

[linkedin.com/company/szaboscandic](https://www.linkedin.com/company/szaboscandic) 

## p38 MAPK (phospho Tyr182) antibody [HL2741]

**Cat. No. GTX639570**

<b>Host</b>	Rabbit
<b>Clonality</b>	Monoclonal
<b>Isotype</b>	IgG
<b>Application</b>	IHC-P
<b>Reactivity</b>	Human, Mouse, Rat

**Package**  
100 µl, 25 µl

## APPLICATION

**Application Note**

\*Optimal dilutions/concentrations should be determined by the researcher.

**Suggested dilution**                      **Recommended dilution**

IHC-P    1:100-1:1000

Not tested in other applications.

**Calculated MW**                      41 kDa. ([Note](#))

## PROPERTIES

**Form**                                      Liquid**Buffer**                                      PBS**Preservative**                              No preservative**Storage**                                      Store as concentrated solution. Centrifuge briefly prior to opening vial. For short-term storage (1-2 weeks), store at 4°C. For long-term storage, aliquot and store at -20°C or below. Avoid multiple freeze-thaw cycles.**Concentration**                              1 mg/ml (Please refer to the vial label for the specific concentration.)**Immunogen**                                      Carrier-protein conjugated synthetic peptide surrounding phospho Tyr182 of human p38 MAPK. The exact sequence is proprietary.**Purification**                                      Affinity purified by Protein A.**Conjugation**                                      Unconjugated**Note**

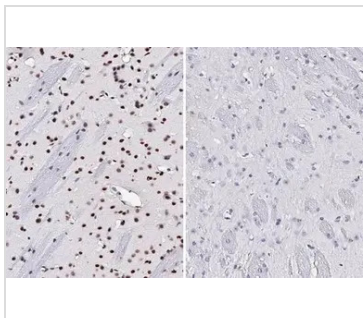
For laboratory research use only. Not for any clinical, therapeutic, or diagnostic use in humans or animals. Not for animal or human consumption.

Purchasers shall not, and agree not to enable third parties to, analyze, copy, reverse engineer or otherwise attempt to determine the structure or sequence of the product.



For full product information, images and publications, please visit our [website](#).

## DATA IMAGES

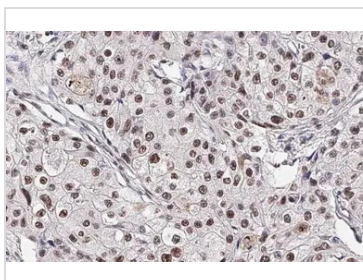
**GTX639570 IHC-P Image**

p38 MAPK (phospho Tyr182) antibody [HL2741] detects p38 MAPK (phospho Tyr182) protein at cytoplasm and nucleus by immunohistochemical analysis in the presence of control peptide (left) or antigen-specific peptide (right).

Sample: Paraffin-embedded mouse brain.

p38 MAPK (phospho Tyr182) stained by p38 MAPK (phospho Tyr182) antibody [HL2741] (GTX639570) diluted at 1:100.

Antigen Retrieval: Citrate buffer, pH 6.0, 15 min

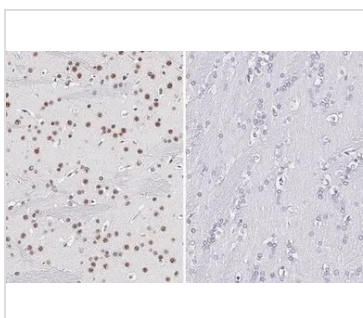
**GTX639570 IHC-P Image**

p38 MAPK (phospho Tyr182) antibody [HL2741] detects p38 MAPK (phospho Tyr182) protein at cytoplasm and nucleus by immunohistochemical analysis.

Sample: Paraffin-embedded human breast carcinoma.

p38 MAPK (phospho Tyr182) stained by p38 MAPK (phospho Tyr182) antibody [HL2741] (GTX639570) diluted at 1:100.

Antigen Retrieval: Citrate buffer, pH 6.0, 15 min

**GTX639570 IHC-P Image**

p38 MAPK (phospho Tyr182) antibody [HL2741] detects p38 MAPK (phospho Tyr182) protein at cytoplasm and nucleus by immunohistochemical analysis in the presence of control peptide (left) or antigen-specific peptide (right).

Sample: Paraffin-embedded rat brain.

p38 MAPK (phospho Tyr182) stained by p38 MAPK (phospho Tyr182) antibody [HL2741] (GTX639570) diluted at 1:100.

Antigen Retrieval: Citrate buffer, pH 6.0, 15 min



For full product information, images and publications, please visit our [website](#).