



# SZABO SCANDIC

Part of Europa Biosite

## Produktinformation



Forschungsprodukte & Biochemikalien



Zellkultur & Verbrauchsmaterial



Diagnostik & molekulare Diagnostik



Laborgeräte & Service

Weitere Information auf den folgenden Seiten!  
See the following pages for more information!



### Lieferung & Zahlungsart

siehe unsere [Liefer- und Versandbedingungen](#)

### Zuschläge

- Mindermengenzuschlag
- Trockeneiszuschlag
- Gefahrgutzuschlag
- Expressversand

### SZABO-SCANDIC HandelsgmbH

Quellenstraße 110, A-1100 Wien

T. +43(0)1 489 3961-0

F. +43(0)1 489 3961-7

[mail@szabo-scandic.com](mailto:mail@szabo-scandic.com)

[www.szabo-scandic.com](http://www.szabo-scandic.com)

[linkedin.com/company/szaboscandic](https://www.linkedin.com/company/szaboscandic) 

## C-Peptide antibody [HMV363] HistoMAX™

Cat. No. GTX639928

Host	Rabbit
Clonality	Monoclonal
Isotype	IgG
Application	IHC-P
Reactivity	Human

Package  
500 µl, 100 µl

## PRODUCT

## Summary

[Go to Normal Tissue Gallery](#)[Go to Cancer Tissue Gallery](#)

## APPLICATION

## Application Note

\*Optimal dilutions/concentrations should be determined by the researcher.

Suggested dilution	Recommended dilution
IHC-P	1:100-1:200

**Note : Heat-induced antigen retrieval for 5 minutes in an autoclave at 121°C in pH 7.8 Target Retrieval Solution buffer.**

Not tested in other applications.

## PROPERTIES

Form	Liquid
Buffer	PBS, 2% BSA, 20% Glycerol
Preservative	0.025% ProClin 300
Storage	Store as concentrated solution. Centrifuge briefly prior to opening vial. For short-term storage (1-2 weeks), store at 4°C. For long-term storage, aliquot and store at -20°C or below. Avoid multiple freeze-thaw cycles.
Concentration	0.01 mg/ml
Immunogen	Synthetic peptide corresponding to human c-peptide.
Purification	Affinity purified by Protein A.
Conjugation	Unconjugated

## Note

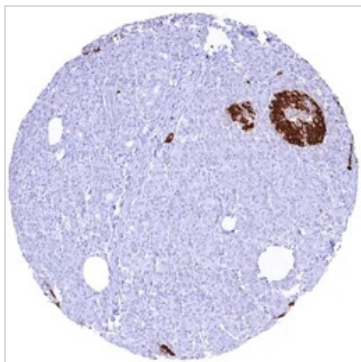
For laboratory research use only. Not for any clinical, therapeutic, or diagnostic use in humans or animals. Not for animal or human consumption.

Purchasers shall not, and agree not to enable third parties to, analyze, copy, reverse engineer or otherwise attempt to determine the structure or sequence of the product.

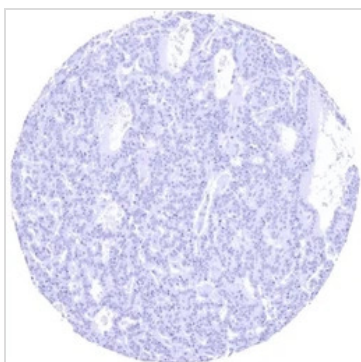


For full product information, images and publications, please visit our [website](#).

## DATA IMAGES

**GTX639928 IHC-P Image**

IHC-P analysis of human pancreas tissue using GTX639928 C-Peptide antibody [HMV363] HistoMAX™. Pancreas with strong cytoplasmic C peptide staining of most islet cells.

**GTX639928 IHC-P Image**

IHC-P analysis of human pancreatic neuroendocrine tumor tissue using GTX639928 C-Peptide antibody [HMV363] HistoMAX™. Pancreatic neuroendocrine tumor lacking C peptide staining.

**GTX639928 IHC-P Image**

IHC-P analysis of human insulinoma (pancreatic neuroendocrine tumor) tissue using GTX639928 C-Peptide antibody [HMV363] HistoMAX™. Pancreatic neuroendocrine tumor (Insulinoma) with strong C peptide staining of all tumor cells.



For full product information, images and publications, please visit our [website](#).