



SZABO SCANDIC

Part of Europa Biosite

Produktinformation



Forschungsprodukte & Biochemikalien



Zellkultur & Verbrauchsmaterial



Diagnostik & molekulare Diagnostik



Laborgeräte & Service

Weitere Information auf den folgenden Seiten!
See the following pages for more information!



Lieferung & Zahlungsart

siehe unsere [Liefer- und Versandbedingungen](#)

Zuschläge

- Mindermengenzuschlag
- Trockeneiszuschlag
- Gefahrgutzuschlag
- Expressversand

SZABO-SCANDIC HandelsgmbH

Quellenstraße 110, A-1100 Wien

T. +43(0)1 489 3961-0

F. +43(0)1 489 3961-7

mail@szabo-scandic.com

www.szabo-scandic.com

[linkedin.com/company/szaboscandic](https://www.linkedin.com/company/szaboscandic) 

Insulin antibody [HMV308] HistoMAX™

Cat. No. GTX639932

Host	Rabbit
Clonality	Monoclonal
Isotype	IgG
Application	IHC-P
Reactivity	Human

Package

500 µl, 100 µl

PRODUCT

Summary

[Go to Normal Tissue Gallery](#)[Go to Cancer Tissue Gallery](#)

APPLICATION

Application Note

*Optimal dilutions/concentrations should be determined by the researcher.

Suggested dilution	Recommended dilution
--------------------	----------------------

IHC-P	1:100-1:200
-------	-------------

Note : Heat-induced antigen retrieval for 5 minutes in an autoclave at 121°C in pH 7.8 Target Retrieval Solution buffer.

Not tested in other applications.

PROPERTIES

Form	Liquid
Buffer	PBS, 2% BSA, 20% Glycerol
Preservative	0.025% ProClin 300
Storage	Store as concentrated solution. Centrifuge briefly prior to opening vial. For short-term storage (1-2 weeks), store at 4°C. For long-term storage, aliquot and store at -20°C or below. Avoid multiple freeze-thaw cycles.
Concentration	0.01 mg/ml
Immunogen	Carrier-protein conjugated synthetic peptide encompassing a sequence within the N-terminus region of human insulin. The exact sequence is proprietary.
Purification	Affinity purified by Protein A.
Conjugation	Unconjugated



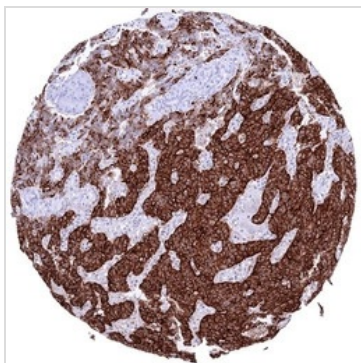
For full product information, images and publications, please visit our [website](#).

For laboratory research use only. Not for any clinical, therapeutic, or diagnostic use in humans or animals. Not for animal or human consumption.

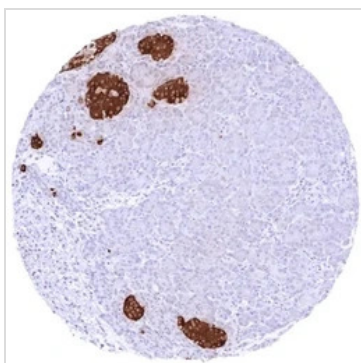
Note

Purchasers shall not, and agree not to enable third parties to, analyze, copy, reverse engineer or otherwise attempt to determine the structure or sequence of the product.

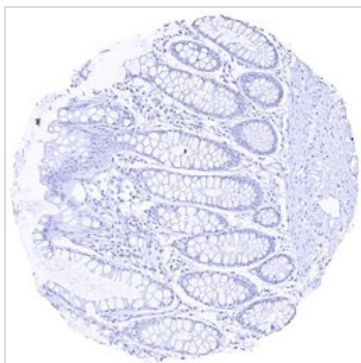
DATA IMAGES

**GTX639932 IHC-P Image**

IHC-P analysis of human insulinoma (pancreatic neuroendocrine tumor) tissue using GTX639932 Insulin antibody [HMV308] HistoMAX™. Pancreatic neuroendocrine tumor (insulinoma) with strong Insulin positivity of most tumor cells.

**GTX639932 IHC-P Image**

IHC-P analysis of human pancreas tissue using GTX639932 Insulin antibody [HMV308] HistoMAX™. Pancreas with a strong cytoplasmic insulin staining of the majority of islet cells.

**GTX639932 IHC-P Image**

IHC-P analysis of human colon tissue using GTX639932 Insulin antibody [HMV308] HistoMAX™. Colon sample completely lacking insulin staining.



For full product information, images and publications, please visit our [website](#).