



SZABO SCANDIC

Part of Europa Biosite

Produktinformation



Forschungsprodukte & Biochemikalien



Zellkultur & Verbrauchsmaterial



Diagnostik & molekulare Diagnostik



Laborgeräte & Service

Weitere Information auf den folgenden Seiten!
See the following pages for more information!



Lieferung & Zahlungsart

siehe unsere [Liefer- und Versandbedingungen](#)

Zuschläge

- Mindermengenzuschlag
- Trockeneiszuschlag
- Gefahrgutzuschlag
- Expressversand

SZABO-SCANDIC Handels GmbH

Quellenstraße 110, A-1100 Wien

T. +43(0)1 489 3961-0

F. +43(0)1 489 3961-7

mail@szabo-scandic.com

www.szabo-scandic.com

[linkedin.com/company/szaboscandic](https://www.linkedin.com/company/szaboscandic)



mGluR5 antibody [HL2876]

Cat. No. GTX640153

Host	Rabbit
Clonality	Monoclonal
Isotype	IgG
Application	WB, IHC-P
Reactivity	Human, Mouse, Rat

Package
100 µl, 25 µl

APPLICATION

Application Note

*Optimal dilutions/concentrations should be determined by the researcher.

Suggested dilution	Recommended dilution
WB	1:500-1:3000
IHC-P	Assay dependent

Not tested in other applications.

Observed MW 130 (monomer), > 250 (dimer or multimer) kDa.

Product Note This antibody was raised against human mGluR5 Extracellular domain.

PROPERTIES

Form	Liquid
Buffer	PBS
Preservative	No preservative
Storage	Store as concentrated solution. Centrifuge briefly prior to opening vial. For short-term storage (1-2 weeks), store at 4°C. For long-term storage, aliquot and store at -20°C or below. Avoid multiple freeze-thaw cycles.
Concentration	1 mg/ml (Please refer to the vial label for the specific concentration.)
Immunogen	Synthetic peptide encompassing a sequence within the Extracellular domain human of mGluR5. The exact sequence is proprietary.
Purification	Affinity purified by Protein A.
Conjugation	Unconjugated

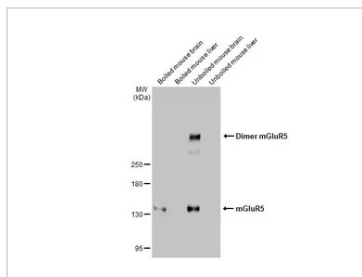
Note

For laboratory research use only. Not for any clinical, therapeutic, or diagnostic use in humans or animals. Not for animal or human consumption.

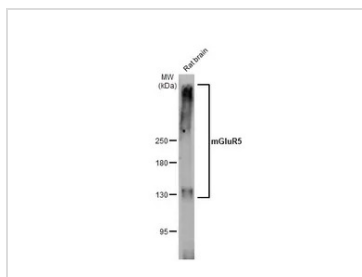
Purchasers shall not, and agree not to enable third parties to, analyze, copy, reverse engineer or otherwise attempt to determine the structure or sequence of the product.



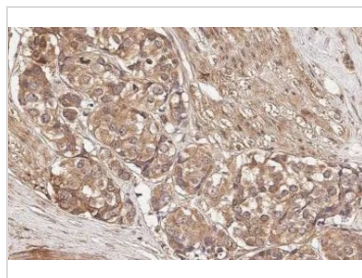
For full product information, images and publications, please visit our [website](#).

DATA IMAGES

GTx640153 WB Image

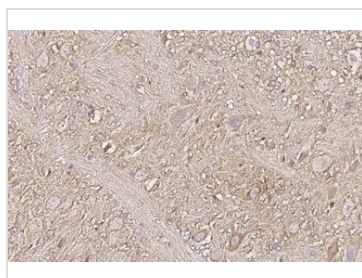
Various tissue extracts (50 µg) were separated by 5% SDS-PAGE, and the membrane was blotted with mGluR5 antibody [HL2876] (GTx640153) diluted at 1:1000. The HRP-conjugated anti-rabbit IgG antibody (GTx213110-01) was used to detect the primary antibody, and the signal was developed with Trident ECL plus-Enhanced.


GTx640153 WB Image

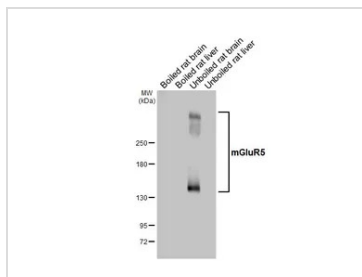
Rat tissue extract (50 µg) was separated by 5% SDS-PAGE, and the membrane was blotted with mGluR5 antibody [HL2877] (GTx640153) diluted at 1:1000. The HRP-conjugated anti-rabbit IgG antibody (GTx213110-01) was used to detect the primary antibody, and the signal was developed with Trident ECL plus-Enhanced.


GTx640153 IHC-P Image

mGluR5 antibody [HL2876] detects mGluR5 protein by immunohistochemical analysis.
Sample: Paraffin-embedded human breast carcinoma.
mGluR5 stained by mGluR5 antibody [HL2876] (GTx640153) diluted at 1:100.
Antigen Retrieval: Citrate buffer, pH 6.0, 15 min


GTx640153 IHC-P Image

mGluR5 antibody [HL2876] detects mGluR5 protein by immunohistochemical analysis.
Sample: Paraffin-embedded rat brain.
mGluR5 stained by mGluR5 antibody [HL2876] (GTx640153) diluted at 1:100.
Antigen Retrieval: Citrate buffer, pH 6.0, 15 min


GTx640153 WB Image

Boiled and unboiled various tissue extracts (50 µg) were separated by 5% SDS-PAGE, and the membrane was blotted with mGluR5 antibody [HL2876] (GTx640153) diluted at 1:1000. The HRP-conjugated anti-rabbit IgG antibody (GTx213110-01) was used to detect the primary antibody, and the signal was developed with Trident ECL plus-Enhanced.



For full product information, images and publications, please visit our [website](https://www.genetex.com).