



SZABO SCANDIC

Part of Europa Biosite

Produktinformation



Forschungsprodukte & Biochemikalien



Zellkultur & Verbrauchsmaterial



Diagnostik & molekulare Diagnostik



Laborgeräte & Service

Weitere Information auf den folgenden Seiten!
See the following pages for more information!



Lieferung & Zahlungsart

siehe unsere [Liefer- und Versandbedingungen](#)

Zuschläge

- Mindermengenzuschlag
- Trockeneiszuschlag
- Gefahrgutzuschlag
- Expressversand

SZABO-SCANDIC HandelsgmbH

Quellenstraße 110, A-1100 Wien

T. +43(0)1 489 3961-0

F. +43(0)1 489 3961-7

mail@szabo-scandic.com

www.szabo-scandic.com

[linkedin.com/company/szaboscandic](https://www.linkedin.com/company/szaboscandic) 

PD-L1 antibody [HL2985]

Cat. No. GTX640395

Host	Rabbit
Clonality	Monoclonal
Isotype	IgG
Application	WB, ICC/IF, IHC-P
Reactivity	Human

Package
100 µl, 25 µl

APPLICATION

Application Note

*Optimal dilutions/concentrations should be determined by the researcher.

Suggested dilution	Recommended dilution
WB	Assay dependent
ICC/IF	1:100-1:1000
IHC-P	Assay dependent

Not tested in other applications.

Calculated MW 33 kDa. ([Note](#))

Product Note The Knockout validations were performed by both WB and ICC/IF assay. This antibody was raised against human PD-L1 Intracellular domain.

PROPERTIES

Form	Liquid
Buffer	PBS
Preservative	No preservative
Storage	Store as concentrated solution. Centrifuge briefly prior to opening vial. For short-term storage (1-2 weeks), store at 4°C. For long-term storage, aliquot and store at -20°C or below. Avoid multiple freeze-thaw cycles.
Concentration	1 mg/ml (Please refer to the vial label for the specific concentration.)
Immunogen	Synthetic peptide encompassing a sequence within the Intracellular domain of human PD-L1. The exact sequence is proprietary.
Purification	Affinity purified by Protein A.
Conjugation	Unconjugated

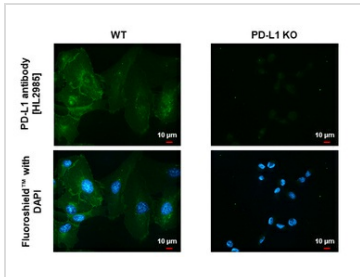


For full product information, images and publications, please visit our [website](#).

For laboratory research use only. Not for any clinical, therapeutic, or diagnostic use in humans or animals. Not for animal or human consumption.

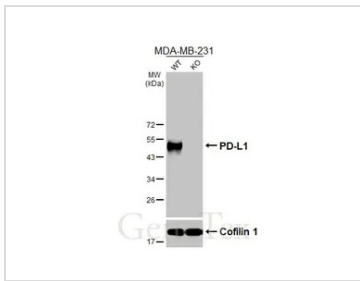
Note
Purchasers shall not, and agree not to enable third parties to, analyze, copy, reverse engineer or otherwise attempt to determine the structure or sequence of the product.

DATA IMAGES



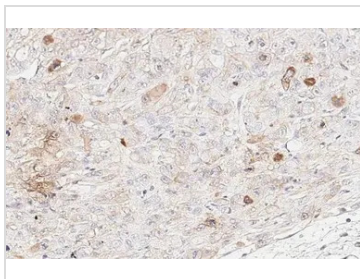
GTX640395 ICC/IF Image

PD-L1 antibody [HL2985] detects PD-L1 protein by immunofluorescent analysis.
Sample: MDA-MB-231 cells were fixed in ice-cold MeOH for 5 min.
Green: PD-L1 stained by PD-L1 antibody [HL2985] (GTX640395) diluted at 1:500.
Blue: Fluoroshield with DAPI (GTX30920).



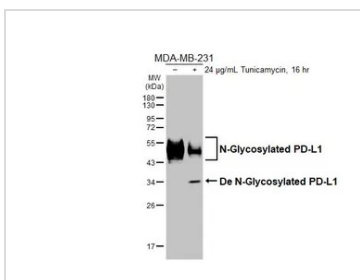
GTX640395 WB Image

Wild-type (WT) and PD-L1 knockout (KO) MDA-MB-231 cell extracts (30 µg) were separated by 12% SDS-PAGE, and the membrane was blotted with PD-L1 antibody [HL2985] (GTX640395) diluted at 1:1000. The HRP-conjugated anti-rabbit IgG antibody (GTX213110-01) was used to detect the primary antibody.



GTX640395 IHC-P Image

PD-L1 antibody [HL2985] detects PD-L1 protein by immunohistochemical analysis.
Sample: Paraffin-embedded human MDA-MB-231 xenograft.
PD-L1 stained by PD-L1 antibody [HL2985] (GTX640395) diluted at 1:1000.
Antigen Retrieval: Citrate buffer, pH 6.0, 15 min



GTX640395 WB Image

Untreated (-) and treated (+) MDA-MB-231 whole cell extracts (30 µg) were separated by 12% SDS-PAGE, and the membrane was blotted with PD-L1 antibody [HL2985] (GTX640395) diluted at 1:1000. The HRP-conjugated anti-rabbit IgG antibody (GTX213110-01) was used to detect the primary antibody.



For full product information, images and publications, please visit our [website](#).