



SZABO SCANDIC

Part of Europa Biosite

Produktinformation



Forschungsprodukte & Biochemikalien



Zellkultur & Verbrauchsmaterial



Diagnostik & molekulare Diagnostik



Laborgeräte & Service

Weitere Information auf den folgenden Seiten!
See the following pages for more information!



Lieferung & Zahlungsart

siehe unsere [Liefer- und Versandbedingungen](#)

Zuschläge

- Mindermengenzuschlag
- Trockeneiszuschlag
- Gefahrgutzuschlag
- Expressversand

SZABO-SCANDIC HandelsgmbH

Quellenstraße 110, A-1100 Wien

T. +43(0)1 489 3961-0

F. +43(0)1 489 3961-7

mail@szabo-scandic.com

www.szabo-scandic.com

[linkedin.com/company/szaboscandic](https://www.linkedin.com/company/szaboscandic) 

Mre11 antibody [HMV328] HistoMAX™

Cat. No. GTX640560

Host	Rabbit
Clonality	Monoclonal
Isotype	IgG
Application	IHC-P
Reactivity	Human

Package

500 µl, 100 µl

APPLICATION

Application Note

*Optimal dilutions/concentrations should be determined by the researcher.

Suggested dilution	Recommended dilution
IHC-P	1:100-1:200

Note : Heat-induced antigen retrieval for 5 minutes in an autoclave at 121°C in pH 7.8 Target Retrieval Solution buffer.

Not tested in other applications.

PROPERTIES

Form	Liquid
Buffer	PBS, 2% BSA, 20% Glycerol
Preservative	0.025% ProClin 300
Storage	Store as concentrated solution. Centrifuge briefly prior to opening vial. For short-term storage (1-2 weeks), store at 4°C. For long-term storage, aliquot and store at -20°C or below. Avoid multiple freeze-thaw cycles.
Concentration	0.03 mg/ml
Immunogen	Recombinant protein encompassing a sequence within the center region of human Mre11. The exact sequence is proprietary.
Purification	Affinity purified by Protein A.
Conjugation	Unconjugated

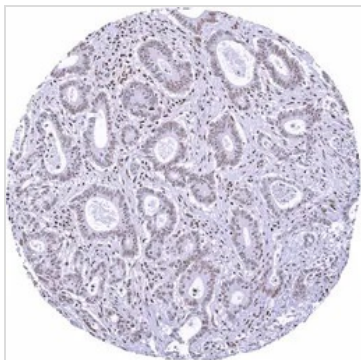
Note

For laboratory research use only. Not for any clinical, therapeutic, or diagnostic use in humans or animals. Not for animal or human consumption.

Purchasers shall not, and agree not to enable third parties to, analyze, copy, reverse engineer or otherwise attempt to determine the structure or sequence of the product.

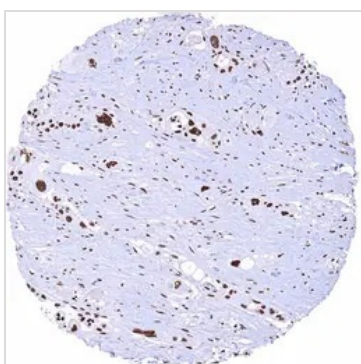
For full product information, images and publications, please visit our [website](#).

DATA IMAGES

**GTX640560 IHC-P Image**

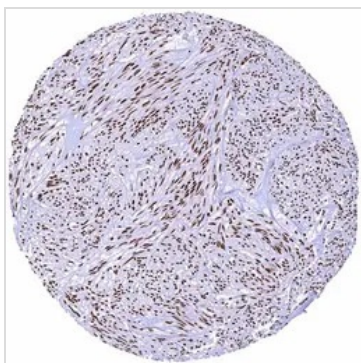
IHC-P analysis of human gastric adenocarcinoma (intestinal type) tissue using GTX640560 Mre11 antibody [HMV328] HistoMAX™.

Gastric adenocarcinoma (intestinal type) exhibiting only a weak nuclear Mre11 staining of tumor cells.

**GTX640560 IHC-P Image**

IHC-P analysis of human gastric adenocarcinoma (diffuse type) tissue using GTX640560 Mre11 antibody [HMV328] HistoMAX™.

Gastric adenocarcinoma (diffuse type) with strong nuclear Mre11 positivity of all tumor cells.

**GTX640560 IHC-P Image**

IHC-P analysis of human gastrointestinal stromal tumor (GIST) tissue using GTX640560 Mre11 antibody [HMV328] HistoMAX™.

Gastrointestinal stromal tumor (GIST) with prominent nuclear Mre11 staining of tumor cells.



For full product information, images and publications, please visit our [website](#).