



SZABO SCANDIC

Part of Europa Biosite

Produktinformation



Forschungsprodukte & Biochemikalien



Zellkultur & Verbrauchsmaterial



Diagnostik & molekulare Diagnostik



Laborgeräte & Service

Weitere Information auf den folgenden Seiten!
See the following pages for more information!



Lieferung & Zahlungsart

siehe unsere [Liefer- und Versandbedingungen](#)

Zuschläge

- Mindermengenzuschlag
- Trockeneiszuschlag
- Gefahrgutzuschlag
- Expressversand

SZABO-SCANDIC HandelsgmbH

Quellenstraße 110, A-1100 Wien

T. +43(0)1 489 3961-0

F. +43(0)1 489 3961-7

mail@szabo-scandic.com

www.szabo-scandic.com

[linkedin.com/company/szaboscandic](https://www.linkedin.com/company/szaboscandic) 

KAP1 antibody [HMV335] HistoMAX™

Cat. No. GTX640915

Host	Rabbit
Clonality	Monoclonal
Isotype	IgG
Application	IHC-P
Reactivity	Human

Package

500 µl, 100 µl

APPLICATION

Application Note

*Optimal dilutions/concentrations should be determined by the researcher.

Suggested dilution	Recommended dilution
--------------------	----------------------

IHC-P	1:100-1:200
-------	-------------

Note : Heat-induced antigen retrieval for 5 minutes in an autoclave at 121°C in pH 7.8 Target Retrieval Solution buffer.

Not tested in other applications.

Calculated MW	89 kDa. (Note)
----------------------	----------------------------------

PROPERTIES

Form	Liquid
-------------	--------

Buffer	PBS, 2% BSA, 20% Glycerol
---------------	---------------------------

Preservative	0.025% ProClin 300
---------------------	--------------------

Storage	Store as concentrated solution. Centrifuge briefly prior to opening vial. For short-term storage (1-2 weeks), store at 4°C. For long-term storage, aliquot and store at -20°C or below. Avoid multiple freeze-thaw cycles.
----------------	--

Concentration	0 mg/ml
----------------------	---------

Immunogen	Recombinant protein encompassing a sequence within the center region of human KAP1. The exact sequence is proprietary.
------------------	--

Purification	Affinity purified by Protein A.
---------------------	---------------------------------

Conjugation	Unconjugated
--------------------	--------------

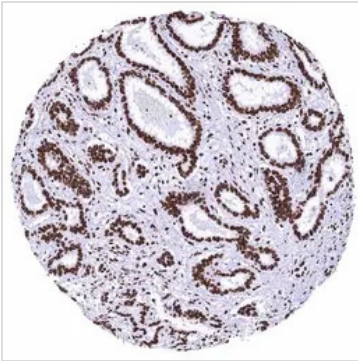
Note	For laboratory research use only. Not for any clinical, therapeutic, or diagnostic use in humans or animals. Not for animal or human consumption.
-------------	---

Note	Purchasers shall not, and agree not to enable third parties to, analyze, copy, reverse engineer or otherwise attempt to determine the structure or sequence of the product.
-------------	---



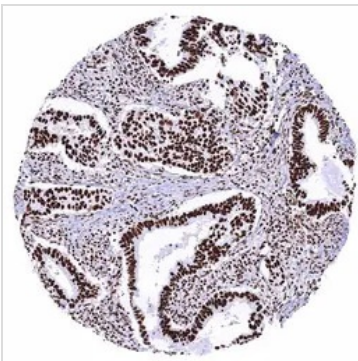
For full product information, images and publications, please visit our [website](#).

DATA IMAGES

**GTX640915 IHC-P Image**

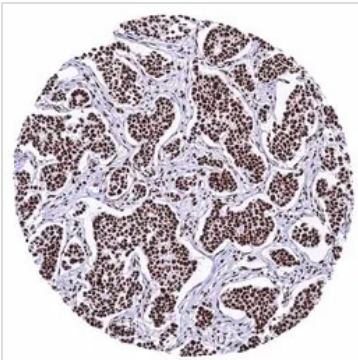
IHC-P analysis of human cholangiocellular carcinoma (CC) of the liver tissue using GTX640915 KAP1 antibody [HMV335] HistoMAX™.

Cholangiocellular carcinoma with strong nuclear TRIM28 staining of tumor cells.

**GTX640915 IHC-P Image**

IHC-P analysis of human cervical adenocarcinoma tissue using GTX640915 KAP1 antibody [HMV335] HistoMAX™.

Adenocarcinoma exhibiting a strong nuclear TRIM28 immunostaining of tumor cells.

**GTX640915 IHC-P Image**

IHC-P analysis of human invasive breast cancer of no special type (NST) tissue using GTX640915 KAP1 antibody [HMV335] HistoMAX™.

Invasive breast cancer of no special type (NST) with strong nuclear TRIM28 staining of tumor cells.



For full product information, images and publications, please visit our [website](#).