



SZABO SCANDIC

Part of Europa Biosite

Produktinformation



Forschungsprodukte & Biochemikalien



Zellkultur & Verbrauchsmaterial



Diagnostik & molekulare Diagnostik



Laborgeräte & Service

Weitere Information auf den folgenden Seiten!
See the following pages for more information!



Lieferung & Zahlungsart

siehe unsere [Liefer- und Versandbedingungen](#)

Zuschläge

- Mindermengenzuschlag
- Trockeneiszuschlag
- Gefahrgutzuschlag
- Expressversand

SZABO-SCANDIC HandelsgmbH

Quellenstraße 110, A-1100 Wien

T. +43(0)1 489 3961-0

F. +43(0)1 489 3961-7

mail@szabo-scandic.com

www.szabo-scandic.com

[linkedin.com/company/szaboscandic](https://www.linkedin.com/company/szaboscandic) 

SDHA antibody [HMV336] HistoMAX™

Cat. No. GTX640916

Host	Rabbit
Clonality	Monoclonal
Isotype	IgG
Application	IHC-P
Reactivity	Human

Package

500 µl, 100 µl

APPLICATION

Application Note

*Optimal dilutions/concentrations should be determined by the researcher.

Suggested dilution	Recommended dilution
IHC-P	1:100-1:200

Note : Heat-induced antigen retrieval for 5 minutes in an autoclave at 121°C in pH 7.8 Target Retrieval Solution buffer.

Not tested in other applications.

Calculated MW 73 kDa. ([Note](#))

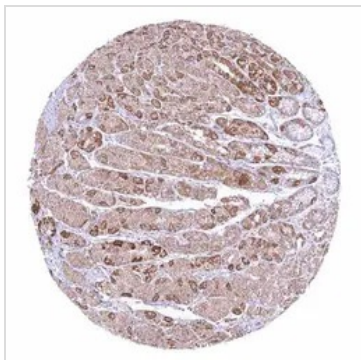
PROPERTIES

Form	Liquid
Buffer	PBS, 2% BSA, 20% Glycerol
Preservative	0.025% ProClin 300
Storage	Store as concentrated solution. Centrifuge briefly prior to opening vial. For short-term storage (1-2 weeks), store at 4°C. For long-term storage, aliquot and store at -20°C or below. Avoid multiple freeze-thaw cycles.
Concentration	0.44 mg/ml
Immunogen	Recombinant protein encompassing a sequence within the N-terminus region of human SDHA. The exact sequence is proprietary.
Purification	Affinity purified by Protein A.
Conjugation	Unconjugated
Note	For laboratory research use only. Not for any clinical, therapeutic, or diagnostic use in humans or animals. Not for animal or human consumption. Purchasers shall not, and agree not to enable third parties to, analyze, copy, reverse engineer or otherwise attempt to determine the structure or sequence of the product.

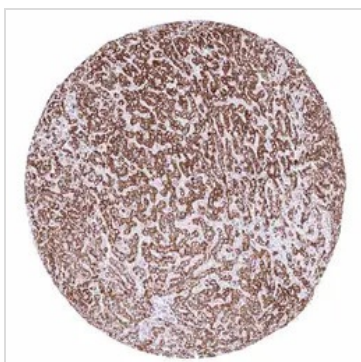


For full product information, images and publications, please visit our [website](#).

DATA IMAGES

**GTX640916 IHC-P Image**

IHC-P analysis of human gastric antrum tissue using GTX640916 SDHA antibody [HMV336] HistoMAX™. A granular cytoplasmic SDHA staining occurs in all cells but it is strongest in stomach glands, especially in parietal cells.

**GTX640916 IHC-P Image**

IHC-P analysis of human liver tissue using GTX640916 SDHA antibody [HMV336] HistoMAX™. Strong granular cytoplasmic SDHA staining of cells, especially in hepatocytes.

**GTX640916 IHC-P Image**

IHC-P analysis of human heart muscle tissue using GTX640916 SDHA antibody [HMV336] HistoMAX™. Strong granular cytoplasmic SDHA staining.



For full product information, images and publications, please visit our [website](#).