



# SZABO SCANDIC

Part of Europa Biosite

## Produktinformation



Forschungsprodukte & Biochemikalien



Zellkultur & Verbrauchsmaterial



Diagnostik & molekulare Diagnostik



Laborgeräte & Service

Weitere Information auf den folgenden Seiten!  
See the following pages for more information!



### Lieferung & Zahlungsart

siehe unsere [Liefer- und Versandbedingungen](#)

### Zuschläge

- Mindermengenzuschlag
- Trockeneiszuschlag
- Gefahrgutzuschlag
- Expressversand

### SZABO-SCANDIC HandelsgmbH

Quellenstraße 110, A-1100 Wien

T. +43(0)1 489 3961-0

F. +43(0)1 489 3961-7

[mail@szabo-scandic.com](mailto:mail@szabo-scandic.com)

[www.szabo-scandic.com](http://www.szabo-scandic.com)

[linkedin.com/company/szaboscandic](https://www.linkedin.com/company/szaboscandic) 

## G-CSF antibody [GT21]

**Cat. No. GTX641067**

<b>Host</b>	Mouse
<b>Clonality</b>	Monoclonal
<b>Isotype</b>	IgG1
<b>Application</b>	WB, ELISA, Sandwich ELISA
<b>Reactivity</b>	Human

**Package**  
100 µl, 25 µl

## APPLICATION

**Application Note**

\*Optimal dilutions/concentrations should be determined by the researcher.

Suggested dilution	Recommended dilution
WB	1:500-1:3000
ELISA	Assay dependent
Sandwich ELISA	Assay dependent

**Note : Capture: GTX641067 or Detection: GTX641068**

**Please notice that detection antibody needs to be conjugated to HRP to function when paired with capture antibody. Please contact us for custom HRP-conjugated antibody.**

Not tested in other applications.

**Calculated MW** 22 kDa. ([Note](#))

## PROPERTIES

<b>Form</b>	Liquid
<b>Buffer</b>	PBS
<b>Preservative</b>	No preservative
<b>Storage</b>	Store as concentrated solution. Centrifuge briefly prior to opening vial. For short-term storage (1-2 weeks), store at 4°C. For long-term storage, aliquot and store at -20°C or below. Avoid multiple freeze-thaw cycles.
<b>Concentration</b>	1 mg/ml (Please refer to the vial label for the specific concentration.)
<b>Immunogen</b>	Recombinant fragment of human G-CSF.
<b>Purification</b>	Affinity purified by Protein A.
<b>Conjugation</b>	Unconjugated

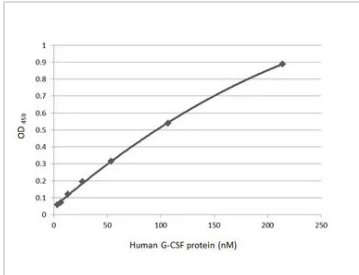


For full product information, images and publications, please visit our [website](#).

For laboratory research use only. Not for any clinical, therapeutic, or diagnostic use in humans or animals. Not for animal or human consumption.

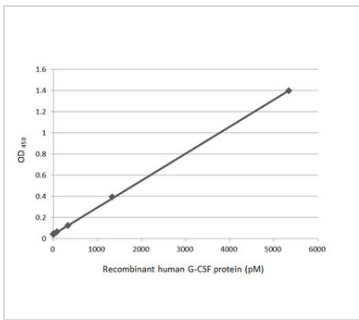
**Note**  
 Purchasers shall not, and agree not to enable third parties to, analyze, copy, reverse engineer or otherwise attempt to determine the structure or sequence of the product.

DATA IMAGES



**GTX641067 ELISA Image**

Indirect ELISA analysis was performed by coating the plate with recombinant Human G-CSF protein (active) (GTX138166-pro) (213.9-3.34 nM). Coated protein was probed with G-CSF antibody [GT21] (GTX641067) (1 µg/mL). Goat anti-mouse IgG antibody (HRP) (GTX213111-01) (1:10000) was used to detect the bound primary antibody.



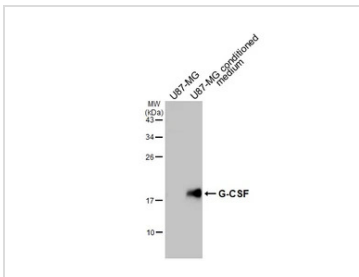
**GTX641067 ELISA Image**

Sandwich ELISA detection of recombinant Human G-CSF protein (active) (GTX138166-pro) using antibodies as below.

**Capture:** G-CSF antibody [GT21] (GTX641067) (5 µg/mL)

**Detection:** HRP-conjugated G-CSF antibody [GT22] (GTX641068) (1 µg/mL)

Please notice that GTX641068 needs to be conjugated to HRP to function as the detection antibody when paired with GTX641067. Please contact us for custom HRP-conjugated antibody.



**GTX641067 WB Image**

U87-MG whole cell extract and conditioned medium (30 µg) were separated by 12% SDS-PAGE, and the membrane was blotted with G-CSF antibody [GT21] (GTX641067) diluted at 1:1000. The HRP-conjugated anti-mouse IgG antibody (GTX213111-01) was used to detect the primary antibody.



For full product information, images and publications, please visit our [website](#).