



SZABO SCANDIC

Part of Europa Biosite

Produktinformation



Forschungsprodukte & Biochemikalien



Zellkultur & Verbrauchsmaterial



Diagnostik & molekulare Diagnostik



Laborgeräte & Service

Weitere Information auf den folgenden Seiten!
See the following pages for more information!



Lieferung & Zahlungsart

siehe unsere [Liefer- und Versandbedingungen](#)

Zuschläge

- Mindermengenzuschlag
- Trockeneiszuschlag
- Gefahrgutzuschlag
- Expressversand

SZABO-SCANDIC HandelsgmbH

Quellenstraße 110, A-1100 Wien

T. +43(0)1 489 3961-0

F. +43(0)1 489 3961-7

mail@szabo-scandic.com

www.szabo-scandic.com

[linkedin.com/company/szaboscandic](https://www.linkedin.com/company/szaboscandic) 

G-CSF antibody [GT22]

Cat. No. GTX641068

Host	Mouse
Clonality	Monoclonal
Isotype	IgG1
Application	WB, ELISA
Reactivity	Human

Package
100 µl, 25 µl

APPLICATION

Application Note

*Optimal dilutions/concentrations should be determined by the researcher.

Suggested dilution	Recommended dilution
WB	1:500-1:3000
ELISA	Assay dependent

Note : Capture: GTX641067 or Detection: GTX641068

Please notice that detection antibody needs to be conjugated to HRP to function when paired with capture antibody. Please contact us for custom HRP-conjugated antibody.

Not tested in other applications.

Observed MW 22 kDa.

PROPERTIES

Form	Liquid
Buffer	PBS
Preservative	No preservative
Storage	Store as concentrated solution. Centrifuge briefly prior to opening vial. For short-term storage (1-2 weeks), store at 4°C. For long-term storage, aliquot and store at -20°C or below. Avoid multiple freeze-thaw cycles.
Concentration	1 mg/ml (Please refer to the vial label for the specific concentration.)
Immunogen	Recombinant fragment of human G-CSF.
Purification	Affinity purified by Protein A.
Conjugation	Unconjugated



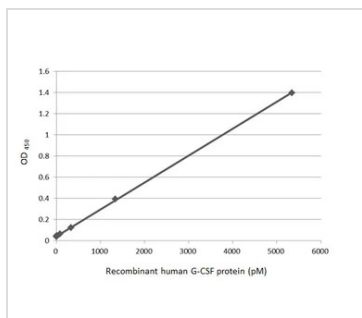
For full product information, images and publications, please visit our [website](#).

For laboratory research use only. Not for any clinical, therapeutic, or diagnostic use in humans or animals. Not for animal or human consumption.

Note

Purchasers shall not, and agree not to enable third parties to, analyze, copy, reverse engineer or otherwise attempt to determine the structure or sequence of the product.

DATA IMAGES



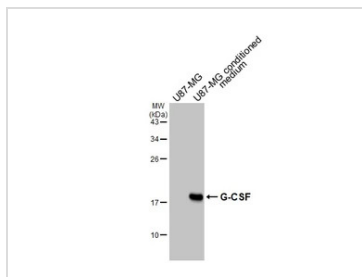
GTX641068 ELISA Image

Sandwich ELISA detection of recombinant Human G-CSF protein (active) (GTX138166-pro) using antibodies as below.

Capture: G-CSF antibody [GT21] (GTX641067) (5 µg/mL)

Detection: HRP-conjugated G-CSF antibody [GT22] (GTX641068) (1 µg/mL)

Please notice that GTX641068 needs to be conjugated to HRP to function as the detection antibody when paired with GTX641067. Please contact us for custom HRP-conjugated antibody.



GTX641068 WB Image

U87-MG whole cell extract and conditioned medium (30 µg) were separated by 12% SDS-PAGE, and the membrane was blotted with G-CSF antibody [GT22] (GTX641068) diluted at 1:1000. The HRP-conjugated anti-mouse IgG antibody (GTX213111-01) was used to detect the primary antibody, and the signal was developed with Trident ECL plus-Enhanced.



For full product information, images and publications, please visit our [website](#).