



SZABO SCANDIC

Part of Europa Biosite

Produktinformation



Forschungsprodukte & Biochemikalien



Zellkultur & Verbrauchsmaterial



Diagnostik & molekulare Diagnostik



Laborgeräte & Service

Weitere Information auf den folgenden Seiten!
See the following pages for more information!



Lieferung & Zahlungsart

siehe unsere [Liefer- und Versandbedingungen](#)

Zuschläge

- Mindermengenzuschlag
- Trockeneiszuschlag
- Gefahrgutzuschlag
- Expressversand

SZABO-SCANDIC HandelsgmbH

Quellenstraße 110, A-1100 Wien

T. +43(0)1 489 3961-0

F. +43(0)1 489 3961-7

mail@szabo-scandic.com

www.szabo-scandic.com

[linkedin.com/company/szaboscandic](https://www.linkedin.com/company/szaboscandic) 

Chromogranin C antibody [HL3311]

Cat. No. GTX641073

Host	Rabbit
Clonality	Monoclonal
Isotype	IgG
Application	WB, IHC-P
Reactivity	Human, Mouse, Rat

Package
100 µl, 25 µl

APPLICATION

Application Note

*Optimal dilutions/concentrations should be determined by the researcher.

Suggested dilution	Recommended dilution
WB	1:500-1:3000
IHC-P	Assay dependent

Not tested in other applications.

Observed MW 88-95 kDa.

PROPERTIES

Form	Liquid
Buffer	PBS
Preservative	No preservative
Storage	Store as concentrated solution. Centrifuge briefly prior to opening vial. For short-term storage (1-2 weeks), store at 4°C. For long-term storage, aliquot and store at -20°C or below. Avoid multiple freeze-thaw cycles.
Concentration	1 mg/ml (Please refer to the vial label for the specific concentration.)
Immunogen	Recombinant fragment of human Chromogranin C.
Purification	Affinity purified by Protein A.
Conjugation	Unconjugated

Note

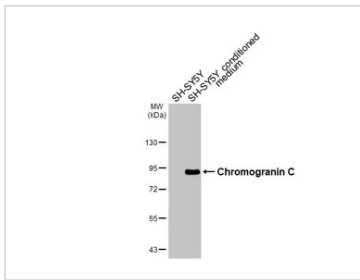
For laboratory research use only. Not for any clinical, therapeutic, or diagnostic use in humans or animals. Not for animal or human consumption.

Purchasers shall not, and agree not to enable third parties to, analyze, copy, reverse engineer or otherwise attempt to determine the structure or sequence of the product.



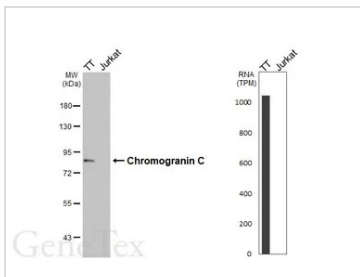
For full product information, images and publications, please visit our [website](#).

DATA IMAGES



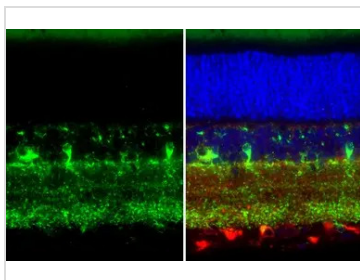
GTX641073 WB Image

SH-SY5Y whole cell extract and conditioned medium (30 µg) were separated by 7.5% SDS-PAGE, and the membrane was blotted with Chromogranin C antibody [HL3311] (GTX641073) diluted at 1:1000. The HRP-conjugated anti-rabbit IgG antibody (GTX213110-01) was used to detect the primary antibody.



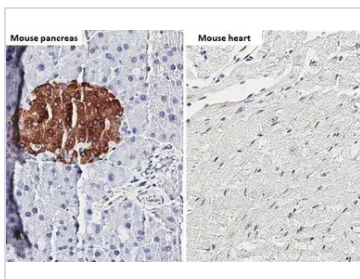
GTX641073 WB Image

Various whole cell extracts (30 µg) were separated by 7.5% SDS-PAGE, and the membrane was blotted with Chromogranin C antibody [HL3311] (GTX641073) diluted at 1:1000. The HRP-conjugated anti-rabbit IgG antibody (GTX213110-01) was used to detect the primary antibody. Corresponding RNA expression data for the same cell lines are based on Human Protein Atlas program.



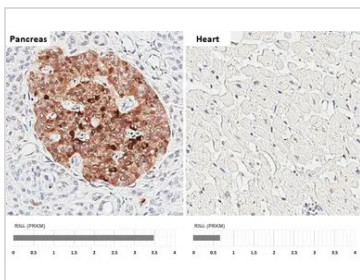
GTX641073 IHC-P Image

Chromogranin C antibody [HL3311] detects Chromogranin C protein by immunohistochemical analysis. Sample: Paraffin-embedded rat eye. Chromogranin C stained by Chromogranin C antibody [HL3311] (GTX641073) diluted at 1:250. Red: beta Tubulin 3/ Tuj1, stained by beta Tubulin 3/ Tuj1 antibody [GT11710] (GTX631836) diluted at 1:500. Antigen Retrieval: Citrate buffer, pH 6.0, 15 min



GTX641073 IHC-P Image

Chromogranin C antibody [HL3311] detects Chromogranin C protein by immunohistochemical analysis. Sample: Paraffin-embedded mouse tissues. Chromogranin C stained by Chromogranin C antibody [HL3311] (GTX641073) diluted at 1:200. Antigen Retrieval: Citrate buffer, pH 6.0, 15 min. Heart tissue was shown as the negative tissue.



GTX641073 IHC-P Image

Chromogranin C antibody [HL3311] detects Chromogranin C protein by immunohistochemical analysis. Sample: Paraffin-embedded human tissues. Chromogranin C stained by Chromogranin C antibody [HL3311] (GTX641073) diluted at 1:200. Antigen Retrieval: Citrate buffer, pH 6.0, 15 min. Corresponding RNA expression data for the same tissues are based on NCBI.



For full product information, images and publications, please visit our [website](#).