



# SZABO SCANDIC

Part of Europa Biosite

## Produktinformation



Forschungsprodukte & Biochemikalien



Zellkultur & Verbrauchsmaterial



Diagnostik & molekulare Diagnostik



Laborgeräte & Service

Weitere Information auf den folgenden Seiten!  
See the following pages for more information!



### Lieferung & Zahlungsart

siehe unsere [Liefer- und Versandbedingungen](#)

### Zuschläge

- Mindermengenzuschlag
- Trockeneiszuschlag
- Gefahrgutzuschlag
- Expressversand

### SZABO-SCANDIC HandelsgmbH

Quellenstraße 110, A-1100 Wien

T. +43(0)1 489 3961-0

F. +43(0)1 489 3961-7

[mail@szabo-scandic.com](mailto:mail@szabo-scandic.com)

[www.szabo-scandic.com](http://www.szabo-scandic.com)

[linkedin.com/company/szaboscandic](https://www.linkedin.com/company/szaboscandic) 

## VGluT1 antibody [GT34]

**Cat. No. GTX641142**

<b>Host</b>	Mouse
<b>Clonality</b>	Monoclonal
<b>Isotype</b>	IgG2b
<b>Application</b>	WB, IHC-P
<b>Reactivity</b>	Mouse, Rat

**Package**  
100 µl, 25 µl

## APPLICATION

**Application Note**

\*Optimal dilutions/concentrations should be determined by the researcher.

Suggested dilution	Recommended dilution
WB	1:500-1:3000
IHC-P	Assay dependent

Not tested in other applications.

**Observed MW** 45-55 (smear) kDa.

## PROPERTIES

<b>Form</b>	Liquid
<b>Buffer</b>	PBS
<b>Preservative</b>	No preservative
<b>Storage</b>	Store as concentrated solution. Centrifuge briefly prior to opening vial. For short-term storage (1-2 weeks), store at 4°C. For long-term storage, aliquot and store at -20°C or below. Avoid multiple freeze-thaw cycles.
<b>Concentration</b>	1 mg/ml (Please refer to the vial label for the specific concentration.)
<b>Immunogen</b>	The immunogen used to generate this antibody corresponds to human VGluT1.
<b>Purification</b>	Affinity purified by Protein A.
<b>Conjugation</b>	Unconjugated

**Note**

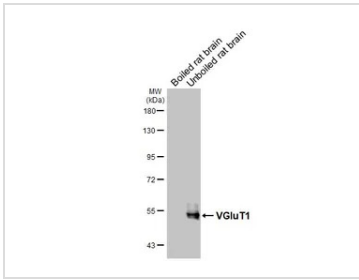
For laboratory research use only. Not for any clinical, therapeutic, or diagnostic use in humans or animals. Not for animal or human consumption.

Purchasers shall not, and agree not to enable third parties to, analyze, copy, reverse engineer or otherwise attempt to determine the structure or sequence of the product.



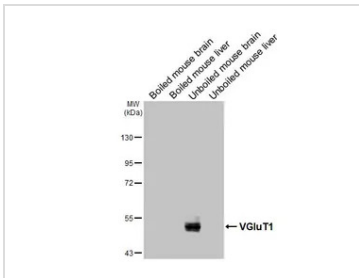
For full product information, images and publications, please visit our [website](#).

DATA IMAGES



**GTX641142 WB Image**

Boiled and unboiled rat tissue extracts (50 µg) were separated by 7.5% SDS-PAGE, and the membrane was blotted with VGLuT1 antibody [GT34] (GTX641142) diluted at 1:1000. The HRP-conjugated anti-mouse IgG antibody (GTX213111-01) was used to detect the primary antibody.



**GTX641142 WB Image**

Boiled and unboiled various tissue extracts (50 µg) were separated by 7.5% SDS-PAGE, and the membrane was blotted with VGLuT1 antibody [GT34] (GTX641142) diluted at 1:1000. The HRP-conjugated anti-mouse IgG antibody (GTX213111-01) was used to detect the primary antibody.



**GTX641142 IHC-P Image**

VGLuT1 antibody [GT34] detects VGLuT1 protein by immunohistochemical analysis.

Sample: Paraffin-embedded mouse brain.

VGLuT1 stained by VGLuT1 antibody [GT34] (GTX641142) diluted at 1:100.

Antigen Retrieval: Citrate buffer, pH 6.0, 15 min



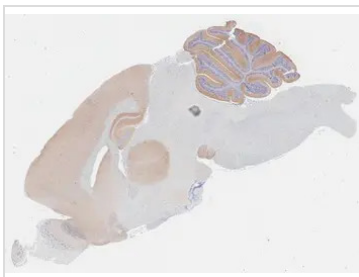
**GTX641142 IHC-P Image**

VGLuT1 antibody [GT34] detects VGLuT1 protein by immunohistochemical analysis.

Sample: Paraffin-embedded mouse hippocampus.

VGLuT1 stained by VGLuT1 antibody [GT34] (GTX641142) diluted at 1:100.

Antigen Retrieval: Citrate buffer, pH 6.0, 15 min



**GTX641142 IHC-P Image**

VGLuT1 antibody [GT34] detects VGLuT1 protein by immunohistochemical analysis.

Sample: Paraffin-embedded mouse brain.

VGLuT1 stained by VGLuT1 antibody [GT34] (GTX641142) diluted at 1:100.

Antigen Retrieval: Citrate buffer, pH 6.0, 15 min



For full product information, images and publications, please visit our [website](#).