



SZABO SCANDIC

Part of Europa Biosite

Produktinformation



Forschungsprodukte & Biochemikalien



Zellkultur & Verbrauchsmaterial



Diagnostik & molekulare Diagnostik



Laborgeräte & Service

Weitere Information auf den folgenden Seiten!
See the following pages for more information!



Lieferung & Zahlungsart

siehe unsere [Liefer- und Versandbedingungen](#)

Zuschläge

- Mindermengenzuschlag
- Trockeneiszuschlag
- Gefahrgutzuschlag
- Expressversand

SZABO-SCANDIC HandelsgmbH

Quellenstraße 110, A-1100 Wien

T. +43(0)1 489 3961-0

F. +43(0)1 489 3961-7

mail@szabo-scandic.com

www.szabo-scandic.com

[linkedin.com/company/szaboscandic](https://www.linkedin.com/company/szaboscandic) 

BTK (phospho Tyr223) antibody [HL3403]

Cat. No. GTX641240

Host	Rabbit
Clonality	Monoclonal
Isotype	IgG
Application	WB
Reactivity	Human

Package
100 µl, 25 µl

APPLICATION

Application Note

*Optimal dilutions/concentrations should be determined by the researcher.

Suggested dilution	Recommended dilution
--------------------	----------------------

WB	1:500-1:3000
----	--------------

Not tested in other applications.

Observed MW	68-75 (smear) kDa.
--------------------	--------------------

PROPERTIES

Form	Liquid
-------------	--------

Buffer	PBS
---------------	-----

Preservative	No Preservative
---------------------	-----------------

Storage	Store as concentrated solution. Centrifuge briefly prior to opening vial. For short-term storage (1-2 weeks), store at 4°C. For long-term storage, aliquot and store at -20°C or below. Avoid multiple freeze-thaw cycles.
----------------	--

Concentration	batch dependent (Please refer to the vial label for the specific concentration.)
----------------------	--

Immunogen	Carrier-protein conjugated synthetic peptide surrounding phospho Tyr223 of human BTK. The exact sequence is proprietary.
------------------	--

Purification	Affinity purified by Protein A.
---------------------	---------------------------------

Conjugation	Unconjugated
--------------------	--------------

Note

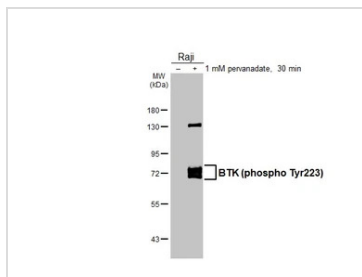
For laboratory research use only. Not for any clinical, therapeutic, or diagnostic use in humans or animals. Not for animal or human consumption.

Purchasers shall not, and agree not to enable third parties to, analyze, copy, reverse engineer or otherwise attempt to determine the structure or sequence of the product.



For full product information, images and publications, please visit our [website](#).

DATA IMAGES

**GTX641240 WB Image**

Untreated (-) and treated (+) Raji whole cell extracts (30 µg) were separated by 7.5% SDS-PAGE, and the membrane was blotted with BTK (phospho Tyr223) antibody [HL3403] (GTX641240) diluted at 1:1000. The HRP-conjugated anti-rabbit IgG antibody (GTX213110-01) was used to detect the primary antibody.



For full product information, images and publications, please visit our [website](#).