



# SZABO SCANDIC

Part of Europa Biosite

## Produktinformation



Forschungsprodukte & Biochemikalien



Zellkultur & Verbrauchsmaterial



Diagnostik & molekulare Diagnostik



Laborgeräte & Service

Weitere Information auf den folgenden Seiten!  
See the following pages for more information!



### Lieferung & Zahlungsart

siehe unsere [Liefer- und Versandbedingungen](#)

### Zuschläge

- Mindermengenzuschlag
- Trockeneiszuschlag
- Gefahrgutzuschlag
- Expressversand

### SZABO-SCANDIC HandelsgmbH

Quellenstraße 110, A-1100 Wien

T. +43(0)1 489 3961-0

F. +43(0)1 489 3961-7

[mail@szabo-scandic.com](mailto:mail@szabo-scandic.com)

[www.szabo-scandic.com](http://www.szabo-scandic.com)

[linkedin.com/company/szaboscandic](https://www.linkedin.com/company/szaboscandic) 

## CD8 antibody [4B11]

**Cat. No. GTX75393**

<b>Host</b>	Mouse
<b>Clonality</b>	Monoclonal
<b>Isotype</b>	IgG2b
<b>Application</b>	WB, IHC-P, IHC-Fr
<b>Reactivity</b>	Human

Reference ( 1 )  
 Package  
 200 µl

## APPLICATION

**Application Note**

\*Optimal dilutions/concentrations should be determined by the researcher.

Suggested dilution	Recommended dilution
WB	1:25
IHC-P	1:50
IHC-Fr	1:50

**Note : This product requires antigen retrieval using heat treatment prior to staining of paraffin sections. Tris/EDTA buffer pH 8.0 is recommended for this purpose.**

Not tested in other applications.

**Product Note** The antibody binds to the beta chain, recognizing an epitope that is dependent upon expression of both CD8 alpha and CD8 beta.

## PROPERTIES

<b>Form</b>	Liquid
<b>Buffer</b>	Tissue culture supernatant
<b>Preservative</b>	0.09% Sodium azide
<b>Storage</b>	Store as concentrated solution. Centrifuge briefly prior to opening vial. Store at 4°C. DO NOT FREEZE.
<b>Immunogen</b>	Synthetic peptide derived from the carboxy terminal region of the human CD8 alpha chain coupled to a N-terminal cysteine, with the sequence C-KSDGKPSLSARYV. The peptide was coupled to bovine serum albumin and keyhole limpet hemocyanin.
<b>Purification</b>	Unpurified
<b>Conjugation</b>	Unconjugated



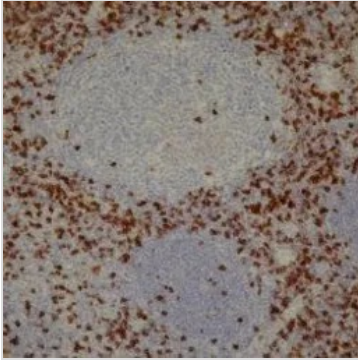
For full product information, images and publications, please visit our [website](#).

For laboratory research use only. Not for any clinical, therapeutic, or diagnostic use in humans or animals. Not for animal or human consumption.

**Note**

Purchasers shall not, and agree not to enable third parties to, analyze, copy, reverse engineer or otherwise attempt to determine the structure or sequence of the product.

## DATA IMAGES

**GTX75393 IHC-P Image**

IHC-P analysis of human tonsil tissue using GTX75393 CD8 antibody [4B11].



For full product information, images and publications, please visit our [website](#).