



SZABO SCANDIC

Part of Europa Biosite

Produktinformation



Forschungsprodukte & Biochemikalien



Zellkultur & Verbrauchsmaterial



Diagnostik & molekulare Diagnostik



Laborgeräte & Service

Weitere Information auf den folgenden Seiten!
See the following pages for more information!



Lieferung & Zahlungsart

siehe unsere [Liefer- und Versandbedingungen](#)

Zuschläge

- Mindermengenzuschlag
- Trockeneiszuschlag
- Gefahrgutzuschlag
- Expressversand

SZABO-SCANDIC HandelsgmbH

Quellenstraße 110, A-1100 Wien

T. +43(0)1 489 3961-0

F. +43(0)1 489 3961-7

mail@szabo-scandic.com

www.szabo-scandic.com

[linkedin.com/company/szaboscandic](https://www.linkedin.com/company/szaboscandic) 

FYN (phospho Tyr530) antibody

Cat. No. GTX86757

Host	Rabbit
Clonality	Polyclonal
Isotype	IgG
Application	WB, IHC-P
Reactivity	Human, Mouse

Package
100 µl

APPLICATION

Application Note

*Optimal dilutions/concentrations should be determined by the researcher.

Suggested dilution	Recommended dilution
WB	Assay dependent
IHC-P	Assay dependent

Not tested in other applications.

Calculated MW 60 kDa. ([Note](#))

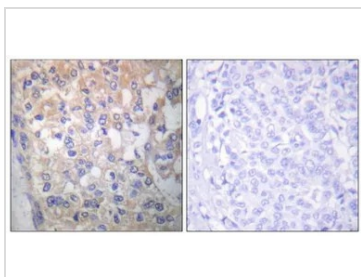
PROPERTIES

Form	Liquid
Buffer	PBS (without Mg ²⁺ and Ca ²⁺) pH7.4, 150mM NaCl, 50% Glycerol
Preservative	0.02% Sodium azide
Storage	Store at -20 degrees Celcius. Product is stable for at least 1 year.
Concentration	Batch dependent (Please refer to the vial label for the specific concentration.)
Immunogen	The antiserum was produced against synthesized peptide derived from human Fyn around the phosphorylation site of Tyr530.
Purification	Purified by affinity purification via sequential chromatography on phospho-peptide and non-phospho-peptide affinity columns
Conjugation	Unconjugated
Note	For laboratory research use only. Not for any clinical, therapeutic, or diagnostic use in humans or animals. Not for animal or human consumption. Purchasers shall not, and agree not to enable third parties to, analyze, copy, reverse engineer or otherwise attempt to determine the structure or sequence of the product.



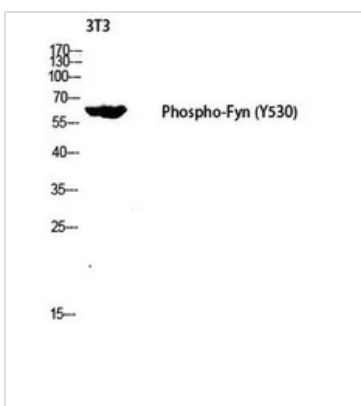
For full product information, images and publications, please visit our [website](#).

DATA IMAGES



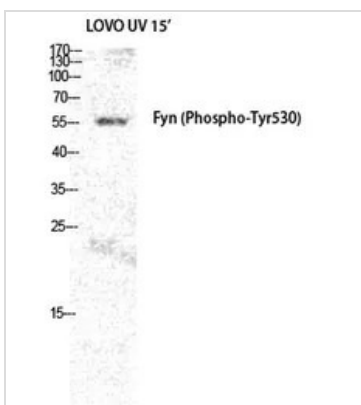
GTX86757 IHC-P Image

IHC-P analysis of human breast carcinoma using GTX86757 Fyn (phospho Tyr530) antibody. The picture on the right is blocked with the phospho peptide.



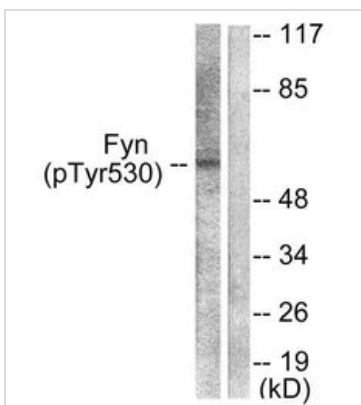
GTX86757 WB Image

WB analysis of 3T3 cell lysates using GTX86757 Fyn (phospho Tyr530) antibody.
Dilution : 1:2000



GTX86757 WB Image

WB analysis of LOVO+UV cell lysates using GTX86757 Fyn (phospho Tyr530) antibody.
Dilution : 1:2000



GTX86757 WB Image

WB analysis of 293 cells treated with H₂O₂ 100uM 15 mins lysates GTX86757 Fyn (phospho Tyr530) antibody. The lane on the right is blocked with the phospho peptide.



For full product information, images and publications, please visit our [website](#).