



SZABO SCANDIC

Part of Europa Biosite

Produktinformation



Forschungsprodukte & Biochemikalien



Zellkultur & Verbrauchsmaterial



Diagnostik & molekulare Diagnostik



Laborgeräte & Service

Weitere Information auf den folgenden Seiten!
See the following pages for more information!



Lieferung & Zahlungsart

siehe unsere [Liefer- und Versandbedingungen](#)

Zuschläge

- Mindermengenzuschlag
- Trockeneiszuschlag
- Gefahrgutzuschlag
- Expressversand

SZABO-SCANDIC HandelsgmbH

Quellenstraße 110, A-1100 Wien

T. +43(0)1 489 3961-0

F. +43(0)1 489 3961-7

mail@szabo-scandic.com

www.szabo-scandic.com

[linkedin.com/company/szaboscandic](https://www.linkedin.com/company/szaboscandic)

HMGA1 (aa9-21) antibody, Internal (near N-term)

Cat. No. GTX88373

Host	Goat
Clonality	Polyclonal
Isotype	IgG
Application	WB, IHC-P
Reactivity	Human

Package
100 µg

APPLICATION

Application Note

*Optimal dilutions/concentrations should be determined by the researcher.

Suggested dilution	Recommended dilution
WB	0.5-1µg/ml
IHC-P	3.75µg/ml

Not tested in other applications.

Calculated MW 12 kDa. ([Note](#))

Product Note

This antibody is expected to recognize reported isoforms a (NP_665906.1, NP_665908.1, NP_665911.1) and b (NP_002122.1, NP_665910.1, NP_665912.1). This antibody is not expected to cross-react with HMGA2.

PROPERTIES

Form	Liquid
Buffer	TBS pH7.3, 0.5% BSA
Preservative	0.02% Sodium azide
Storage	Store as concentrated solution. Centrifuge briefly prior to opening vial. For short-term storage (1-2 weeks), store at 4°C. For long-term storage, aliquot and store at -20°C or below. Avoid multiple freeze-thaw cycles.
Concentration	0.50 mg/ml (Please refer to the vial label for the specific concentration.)
Immunogen	Peptide with sequence C-SQPLASKQEKGDT, from the internal region (near N Terminus) of the protein sequence according to NP_665906.1; NP_002122.1.
Purification	Purified by ammonium sulphate precipitation followed by antigen affinity chromatography
Conjugation	Unconjugated



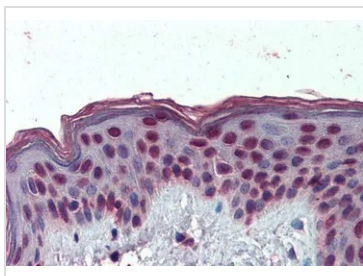
For full product information, images and publications, please visit our [website](#).

For laboratory research use only. Not for any clinical, therapeutic, or diagnostic use in humans or animals. Not for animal or human consumption.

Note

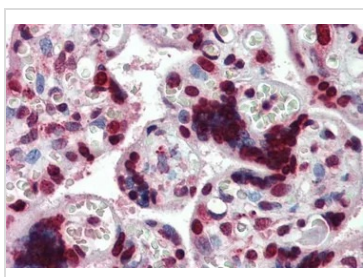
Purchasers shall not, and agree not to enable third parties to, analyze, copy, reverse engineer or otherwise attempt to determine the structure or sequence of the product.

DATA IMAGES



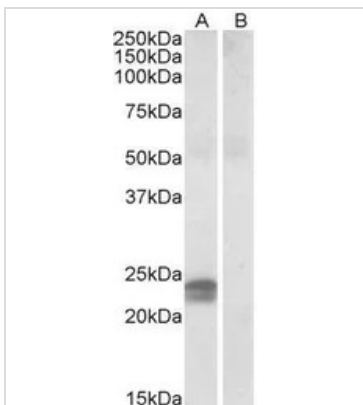
GTX88373 IHC-P Image

IHC-P analysis of human skin using GTX88373 HMGA1 (aa9-21) antibody, Internal (near N-term).
 Antigen retrieval : citrate buffer pH 6
 Dilution : 3.75µg/ml



GTX88373 IHC-P Image

IHC-P analysis of human placenta using GTX88373 HMGA1 (aa9-21) antibody, Internal (near N-term).
 Antigen retrieval : citrate buffer pH 6
 Dilution : 3.75µg/ml



GTX88373 WB Image

WB analysis of human pancreas lysate with (B) and without (A) blocking with the immunising peptide using GTX88373 HMGA1 (aa9-21) antibody, Internal (near N-term).
 Dilution : 0.5µg/ml
 Loading : 35µg protein in RIPA buffer



For full product information, images and publications, please visit our [website](#).