



SZABO SCANDIC

Part of Europa Biosite

Produktinformation



Forschungsprodukte & Biochemikalien



Zellkultur & Verbrauchsmaterial



Diagnostik & molekulare Diagnostik



Laborgeräte & Service

Weitere Information auf den folgenden Seiten!
See the following pages for more information!



Lieferung & Zahlungsart

siehe unsere [Liefer- und Versandbedingungen](#)

Zuschläge

- Mindermengenzuschlag
- Trockeneiszuschlag
- Gefahrgutzuschlag
- Expressversand

SZABO-SCANDIC HandelsgmbH

Quellenstraße 110, A-1100 Wien

T. +43(0)1 489 3961-0

F. +43(0)1 489 3961-7

mail@szabo-scandic.com

www.szabo-scandic.com

[linkedin.com/company/szaboscandic](https://www.linkedin.com/company/szaboscandic) 

LRRK2 (near C Terminus) antibody, Internal

Cat. No. GTX89626

Host	Goat
Clonality	Polyclonal
Isotype	IgG
Application	WB, ICC/IF, IHC-P, EM
Reactivity	Human

Package
100 µg

APPLICATION

Application Note

*Optimal dilutions/concentrations should be determined by the researcher.

Suggested dilution	Recommended dilution
WB	0.3-1µg/ml
ICC/IF	Assay dependent
IHC-P	2µg/ml
EM	Assay dependent

Note : Human Brain (Hippocampus) shows staining of neuronal cytoplasm.

Not tested in other applications.

Calculated MW 286 kDa. ([Note](#))

PROPERTIES

Form	Liquid
Buffer	TBS pH7.3, 0.5% BSA
Preservative	0.02% Sodium azide
Storage	Store as concentrated solution. Centrifuge briefly prior to opening vial. For short-term storage (1-2 weeks), store at 4°C. For long-term storage, aliquot and store at -20°C or below. Avoid multiple freeze-thaw cycles.
Concentration	0.50 mg/ml (Please refer to the vial label for the specific concentration.)
Immunogen	Peptide with sequence CELAEKMRRTSV, from the internal region (near the C Terminus) of the protein sequence according to NP_940980.3.
Purification	Purified by ammonium sulphate precipitation followed by antigen affinity chromatography
Conjugation	Unconjugated



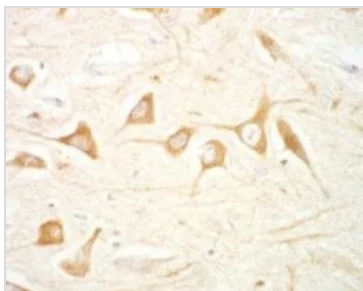
For full product information, images and publications, please visit our [website](#).

For laboratory research use only. Not for any clinical, therapeutic, or diagnostic use in humans or animals. Not for animal or human consumption.

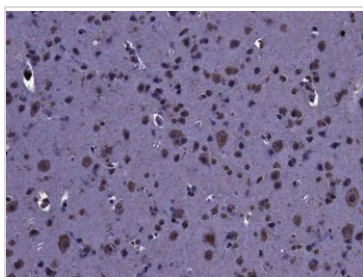
Note

Purchasers shall not, and agree not to enable third parties to, analyze, copy, reverse engineer or otherwise attempt to determine the structure or sequence of the product.

DATA IMAGES

**GTX89626 IHC-P Image**

IHC-P analysis of human hippocampus CA4 using GTX89626 LRRK2 (near C Terminus) antibody, Internal.
Antigen retrieval : citrate buffer pH 6
Dilution : 1.5µg/ml

**GTX89626 IHC-P Image**

IHC-P analysis of human cortex using GTX89626 LRRK2 (near C Terminus) antibody, Internal.
Antigen retrieval : citrate buffer pH 6
Dilution : 2µg/ml



For full product information, images and publications, please visit our [website](#).