



# SZABO SCANDIC

Part of Europa Biosite

## Produktinformation



Forschungsprodukte & Biochemikalien



Zellkultur & Verbrauchsmaterial



Diagnostik & molekulare Diagnostik



Laborgeräte & Service

Weitere Information auf den folgenden Seiten!  
See the following pages for more information!



### Lieferung & Zahlungsart

siehe unsere [Liefer- und Versandbedingungen](#)

### Zuschläge

- Mindermengenzuschlag
- Trockeneiszuschlag
- Gefahrgutzuschlag
- Expressversand

### SZABO-SCANDIC HandelsgmbH

Quellenstraße 110, A-1100 Wien

T. +43(0)1 489 3961-0

F. +43(0)1 489 3961-7

[mail@szabo-scandic.com](mailto:mail@szabo-scandic.com)

[www.szabo-scandic.com](http://www.szabo-scandic.com)

[linkedin.com/company/szaboscandic](https://www.linkedin.com/company/szaboscandic) 

## Melanophilin antibody, C-term

Cat No. GTX89772

Host	Goat
Clonality	Polyclonal
Isotype	IgG
Application	WB, ICC/IF
Reactivity	Mouse

## Package

100 µg

## APPLICATION

## Application Note

\*Optimal dilutions/concentrations should be determined by the researcher.

Suggested dilution	Dilution
WB	0.5-2µg/ml
ICC/IF	Assay dependent

Not tested in other applications.

Calculated MW 65 kDa. ( [Note](#) )

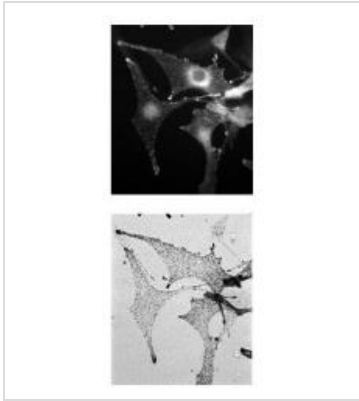
## PROPERTIES

Form	Liquid
Buffer	Tris saline pH7.3, 0.02% sodium azide, 0.5% BSA.
Storage	Store as concentrated solution. Centrifuge briefly prior to opening vial. For short-term storage (1-2 weeks), store at 4°C. For long-term storage, aliquot and store at -20°C or below. Avoid multiple freeze-thaw cycles.
Concentration	0.50 mg/ml (Please refer to the vial label for the specific concentration.)
Immunogen	Peptide with sequence C-ARHIFAKPVMAQQP, from the C Terminus of the protein sequence according to NP_443748.2.
Purification	Purified by ammonium sulphate precipitation followed by antigen affinity chromatography
Conjugation	Unconjugated
Note	For laboratory use only. Not for any clinical, therapeutic, or diagnostic use in humans or animals. Not for animal or human consumption.



For full product information, images and publications, please visit our [website](#).

## DATA IMAGES

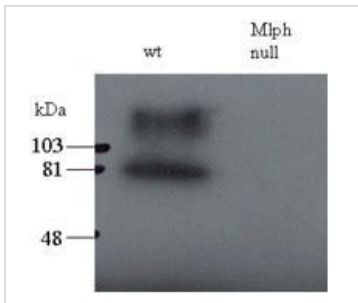
**GTX89772 ICC/IF Image**

ICC-IF analysis of wild-type C57bl6 mouse derived melanocytes using GTX89772 Melanophilin antibody, C-term.

Upper : Primary antibody

Bottom : Brightfield

Dilution : 0.5 $\mu$ g/ml

**GTX89772 WB Image**

WB analysis of wild-type and melanophilin null (Mlph null) mice using GTX89772 Melanophilin antibody, C-term.

Dilution : 0.5 $\mu$ g/ml

Loading : 200 $\mu$ g



For full product information, images and publications, please visit our [website](#).