



# SZABO SCANDIC

Part of Europa Biosite

## Produktinformation



Forschungsprodukte & Biochemikalien



Zellkultur & Verbrauchsmaterial



Diagnostik & molekulare Diagnostik



Laborgeräte & Service

Weitere Information auf den folgenden Seiten!  
See the following pages for more information!



### Lieferung & Zahlungsart

siehe unsere [Liefer- und Versandbedingungen](#)

### Zuschläge

- Mindermengenzuschlag
- Trockeneiszuschlag
- Gefahrgutzuschlag
- Expressversand

### SZABO-SCANDIC HandelsgmbH

Quellenstraße 110, A-1100 Wien

T. +43(0)1 489 3961-0

F. +43(0)1 489 3961-7

[mail@szabo-scandic.com](mailto:mail@szabo-scandic.com)

[www.szabo-scandic.com](http://www.szabo-scandic.com)

[linkedin.com/company/szaboscandic](https://www.linkedin.com/company/szaboscandic) 

## Iba1 (isoform 1 and 3) antibody, C-term

Cat No. GTX89792

<b>Host</b>	Goat
<b>Clonality</b>	Polyclonal
<b>Isotype</b>	IgG
<b>Application</b>	WB, IHC-P
<b>Reactivity</b>	Human, Mouse

## Package

100 µg

## APPLICATION

## Application Note

\*Optimal dilutions/concentrations should be determined by the researcher.

Suggested dilution	Dilution
WB	0.5-3µg/ml
IHC-P	Assay dependent

Not tested in other applications.

**Calculated MW** 17 kDa. ( [Note](#) )

**Specificity/Sensitivity** This antibody is expected to recognize isoform 1 (NP\_116573.1) and isoform 3 (NP\_001614.3).

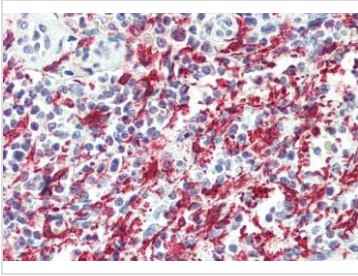
## PROPERTIES

<b>Form</b>	Liquid
<b>Buffer</b>	Tris saline pH7.3, 0.02% sodium azide, 0.5% BSA.
<b>Storage</b>	Store as concentrated solution. Centrifuge briefly prior to opening vial. For short-term storage (1-2 weeks), store at 4°C. For long-term storage, aliquot and store at -20°C or below. Avoid multiple freeze-thaw cycles.
<b>Concentration</b>	0.50 mg/ml (Please refer to the vial label for the specific concentration.)
<b>Immunogen</b>	Peptide with sequence C-TGPPAKKAISELP, from the C Terminus of the protein sequence according to NP_116573.1; NP_001614.3.
<b>Purification</b>	Purified by ammonium sulphate precipitation followed by antigen affinity chromatography
<b>Conjugation</b>	Unconjugated
<b>Note</b>	For laboratory use only. Not for any clinical, therapeutic, or diagnostic use in humans or animals. Not for animal or human consumption.



For full product information, images and publications, please visit our [website](#).

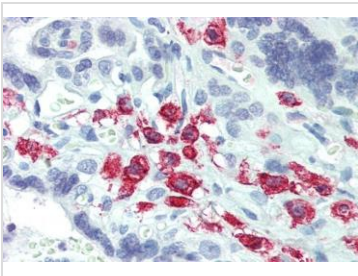
## DATA IMAGES

**GTX89792 IHC-P Image**

IHC-P analysis of human spleen using GTX89792 Iba1 (isoform 1 and 3) antibody, C-term.

Antigen retrieval : citrate buffer pH 6

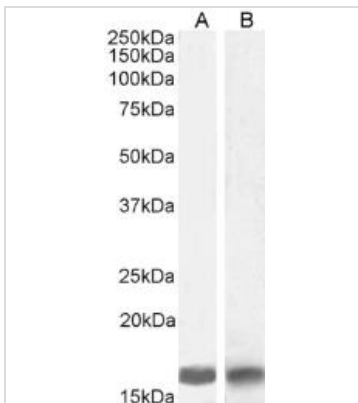
Dilution : 5µg/ml

**GTX89792 IHC-P Image**

IHC-P analysis of human placenta using GTX89792 Iba1 (isoform 1 and 3) antibody, C-term.

Antigen retrieval : citrate buffer pH 6

Dilution : 5µg/ml

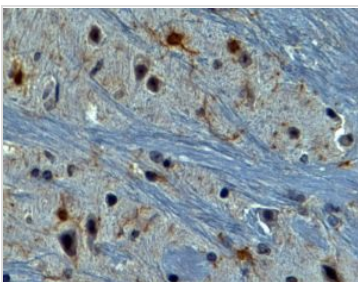
**GTX89792 WB Image**

WB analysis of various samples using GTX89792 Iba1 antibody, C-term.

Lane 1: Human Brain lysate

Lane 2: Mouse Brain lysate

Loading: 35µg per lane .

**GTX89792 IHC-P Image**

IHC-P analysis of mouse brain using GTX89792 Iba1 (isoform 1 and 3) antibody, C-term.

Antigen retrieval : Tris/EDTA buffer pH 9

Dilution : 2µg/ml



For full product information, images and publications, please visit our [website](#).