



# SZABO SCANDIC

Part of Europa Biosite

## Produktinformation



Forschungsprodukte & Biochemikalien



Zellkultur & Verbrauchsmaterial



Diagnostik & molekulare Diagnostik



Laborgeräte & Service

Weitere Information auf den folgenden Seiten!  
See the following pages for more information!



### Lieferung & Zahlungsart

siehe unsere [Liefer- und Versandbedingungen](#)

### Zuschläge

- Mindermengenzuschlag
- Trockeneiszuschlag
- Gefahrgutzuschlag
- Expressversand

### SZABO-SCANDIC HandelsgmbH

Quellenstraße 110, A-1100 Wien

T. +43(0)1 489 3961-0

F. +43(0)1 489 3961-7

[mail@szabo-scandic.com](mailto:mail@szabo-scandic.com)

[www.szabo-scandic.com](http://www.szabo-scandic.com)

[linkedin.com/company/szaboscandic](https://www.linkedin.com/company/szaboscandic) 

## ALS2CR1 antibody, C-term

Cat No. GTX89849

Host	Goat
Clonality	Polyclonal
Isotype	IgG
Application	WB, IHC-P
Reactivity	Human

Package  
100 µg

## APPLICATION

## Application Note

\*Optimal dilutions/concentrations should be determined by the researcher.

Suggested dilution	Dilution
WB	0.2-1µg/ml
IHC-P	2-4µg/ml

**Note : Human Breast shows strong cytoplasm staining in epithelial and myoepithelial duct cells.**

Not tested in other applications.

**Calculated MW** 42 kDa. ( [Note](#) )

**Specificity/Sensitivity** This antibody is expected to recognise both reported isoforms.

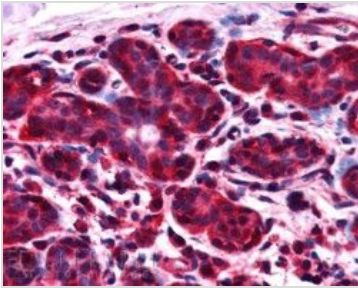
## PROPERTIES

<b>Form</b>	Liquid
<b>Buffer</b>	Tris saline pH7.3, 0.02% sodium azide, 0.5% BSA.
<b>Storage</b>	Store as concentrated solution. Centrifuge briefly prior to opening vial. For short-term storage (1-2 weeks), store at 4°C. For long-term storage, aliquot and store at -20°C or below. Avoid multiple freeze-thaw cycles.
<b>Concentration</b>	0.50 mg/ml (Please refer to the vial label for the specific concentration.)
<b>Immunogen</b>	Peptide with sequence C-ILSETDRDPLQVV, from the C Terminus of the protein sequence according to NP_001129511.1; NP_068596.2.
<b>Purification</b>	Purified by ammonium sulphate precipitation followed by antigen affinity chromatography
<b>Conjugation</b>	Unconjugated
<b>Note</b>	For laboratory use only. Not for any clinical, therapeutic, or diagnostic use in humans or animals. Not for animal or human consumption.



For full product information, images and publications, please visit our [website](#).

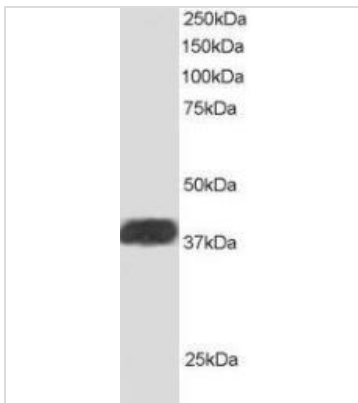
## DATA IMAGES

**GTX89849 IHC-P Image**

IHC-P analysis of human breast using GTX89849 ALS2CR1 antibody, C-term.

Antigen retrieval : citrate buffer pH 6

Dilution : 2.5µg/ml

**GTX89849 WB Image**

WB analysis of human heart lysate using GTX89849 ALS2CR1 antibody, C-term.

Dilution : 1µg/ml

Loading : 30µg protein in RIPA buffer



For full product information, images and publications, please visit our [website](#).