



# SZABO SCANDIC

Part of Europa Biosite

## Produktinformation



Forschungsprodukte & Biochemikalien



Zellkultur & Verbrauchsmaterial



Diagnostik & molekulare Diagnostik



Laborgeräte & Service

Weitere Information auf den folgenden Seiten!  
See the following pages for more information!



### Lieferung & Zahlungsart

siehe unsere [Liefer- und Versandbedingungen](#)

### Zuschläge

- Mindermengenzuschlag
- Trockeneiszuschlag
- Gefahrgutzuschlag
- Expressversand

### SZABO-SCANDIC HandelsgmbH

Quellenstraße 110, A-1100 Wien

T. +43(0)1 489 3961-0

F. +43(0)1 489 3961-7

[mail@szabo-scandic.com](mailto:mail@szabo-scandic.com)

[www.szabo-scandic.com](http://www.szabo-scandic.com)

[linkedin.com/company/szaboscandic](https://www.linkedin.com/company/szaboscandic) 

## UBE2C antibody, C-term

Cat No. GTX89866

Host	Goat
Clonality	Polyclonal
Isotype	IgG
Application	WB, ICC/IF, FACS, IP
Reactivity	Human

Package  
100 µg

## APPLICATION

## Application Note

\*Optimal dilutions/concentrations should be determined by the researcher.

Suggested dilution	Dilution
WB	1-3µg/ml
ICC/IF	10µg/ml
FACS	Assay dependent
IP	Assay dependent

**Note : Strong expression of the protein seen in the cytoplasm of U2OS and MCF7 cells.**

Not tested in other applications.

Calculated MW	20 kDa. ( <a href="#">Note</a> )
Specificity/Sensitivity	This antibody is expected to recognise all reported isoforms.

## PROPERTIES

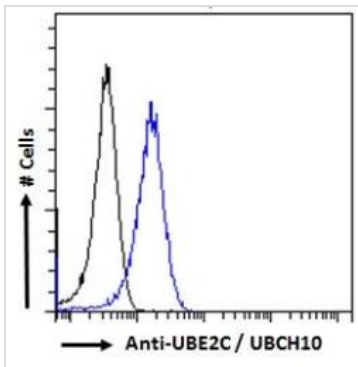
Form	Liquid
Buffer	Tris saline pH7.3, 0.02% sodium azide, 0.5% BSA.
Storage	Store as concentrated solution. Centrifuge briefly prior to opening vial. For short-term storage (1-2 weeks), store at 4°C. For long-term storage, aliquot and store at -20°C or below. Avoid multiple freeze-thaw cycles.
Concentration	0.50 mg/ml (Please refer to the vial label for the specific concentration.)
Immunogen	Peptide with sequence C-QETYSKQVTSQEP, from the C Terminus of the protein sequence according to NP_008950.1; NP_861515.1; NP_861516.1; NP_861517.1; NP_861518.1; NP_001268670.1.
Purification	Purified by ammonium sulphate precipitation followed by antigen affinity chromatography
Conjugation	Unconjugated
Note	For laboratory use only. Not for any clinical, therapeutic, or diagnostic use in humans or animals. Not for animal or human consumption.



For full product information, images and publications, please visit our [website](#).

Date 2019 / 07 / 08 Page 1 of 2

## DATA IMAGES

**GTX89866 FACS Image**

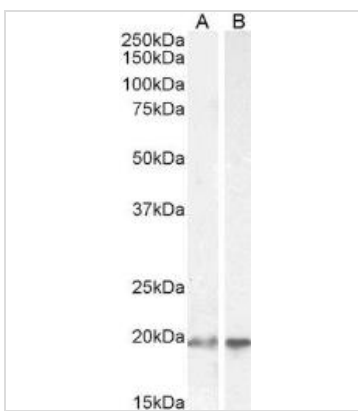
FACS analysis of PFA fixed HeLa cells using GTX89866 UBE2C antibody, C-term.

Blue : Primary antibody

Black : Isotype control

Permeabilization : 0.5% Triton

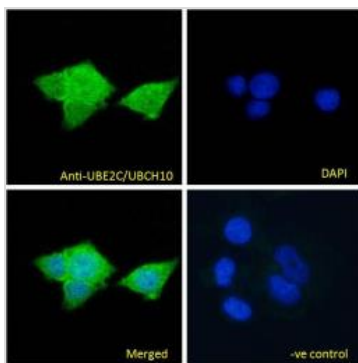
Dilution : 10µg/ml

**GTX89866 WB Image**

WB analysis of HEK293 (A) and HeLa (B) cell lysate using GTX89866 UBE2C antibody, C-term.

Dilution : 2µg/ml

Loading : 35µg protein in RIPA buffer

**GTX89866 ICC/IF Image**

ICC/IF analysis of PFA fixed MCF7 cells using GTX89866 UBE2C antibody, C-term.

Green : Primary antibody

Blue : DAPI

Negative control : Unimmunized goat IgG

Permeabilization : 0.15% Triton

Dilution : 10µg/ml



For full product information, images and publications, please visit our [website](#).