



# SZABO SCANDIC

Part of Europa Biosite

## Produktinformation



Forschungsprodukte & Biochemikalien



Zellkultur & Verbrauchsmaterial



Diagnostik & molekulare Diagnostik



Laborgeräte & Service

Weitere Information auf den folgenden Seiten!  
See the following pages for more information!



### Lieferung & Zahlungsart

siehe unsere [Liefer- und Versandbedingungen](#)

### Zuschläge

- Mindermengenzuschlag
- Trockeneiszuschlag
- Gefahrgutzuschlag
- Expressversand

### SZABO-SCANDIC HandelsgmbH

Quellenstraße 110, A-1100 Wien

T. +43(0)1 489 3961-0

F. +43(0)1 489 3961-7

[mail@szabo-scandic.com](mailto:mail@szabo-scandic.com)

[www.szabo-scandic.com](http://www.szabo-scandic.com)

[linkedin.com/company/szaboscandic](https://www.linkedin.com/company/szaboscandic) 

## KAP1 antibody, C-term

Cat No. GTX89879

Host	Goat
Clonality	Polyclonal
Isotype	IgG
Application	ICC/IF, IHC-P, FACS, ChIP assay
Reactivity	Human

Package  
100 µg

## APPLICATION

## Application Note

\*Optimal dilutions/concentrations should be determined by the researcher.

Suggested dilution	Dilution
ICC/IF	10µg/ml
IHC-P	2-4µg/ml
FACS	Assay dependent
ChIP assay	Assay dependent

**Note : Strong expression of the protein seen in the nucleus of HeLa and U2OS cells.  
Human Breast shows nuclear staining in epithelial duct cells.**

Not tested in other applications.

**Calculated MW** 89 kDa. ( [Note](#) )

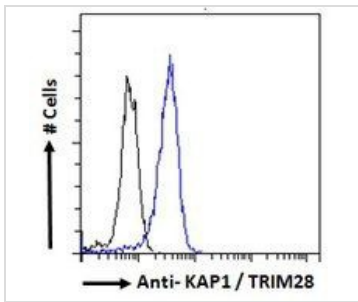
## PROPERTIES

<b>Form</b>	Liquid
<b>Buffer</b>	Tris saline pH7.3, 0.02% sodium azide, 0.5% BSA.
<b>Storage</b>	Store as concentrated solution. Centrifuge briefly prior to opening vial. For short-term storage (1-2 weeks), store at 4°C. For long-term storage, aliquot and store at -20°C or below. Avoid multiple freeze-thaw cycles.
<b>Concentration</b>	0.50 mg/ml (Please refer to the vial label for the specific concentration.)
<b>Immunogen</b>	Peptide with sequence C-SSQELSGGPGDGP, from the C Terminus of the protein sequence according to NP_005753.1.
<b>Purification</b>	Purified by ammonium sulphate precipitation followed by antigen affinity chromatography
<b>Conjugation</b>	Unconjugated
<b>Note</b>	For laboratory use only. Not for any clinical, therapeutic, or diagnostic use in humans or animals. Not for animal or human consumption.



For full product information, images and publications, please visit our [website](#).

## DATA IMAGES

**GTX89879 FACS Image**

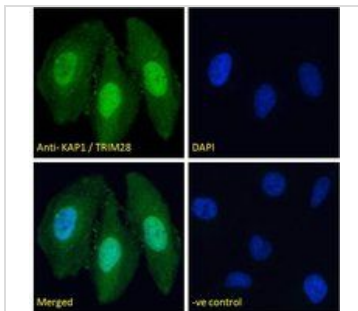
FACS analysis of PFA fixed HeLa cells using GTX89879 KAP1 antibody, C-term.

Blue : Primary antibody

Black : Isotype control

Permeabilization : 0.5% Triton

Dilution : 10µg/ml

**GTX89879 ICC/IF Image**

ICC/IF analysis of PFA fixed HeLa cells using GTX89879 KAP1 antibody, C-term.

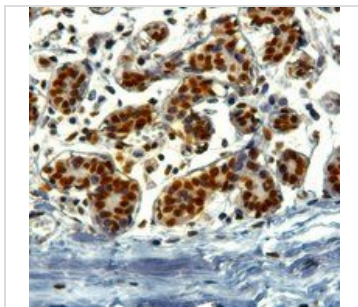
Green : Primary antibody

Blue : DAPI

Negative control : Unimmunized goat IgG

Permeabilization : 0.15% Triton

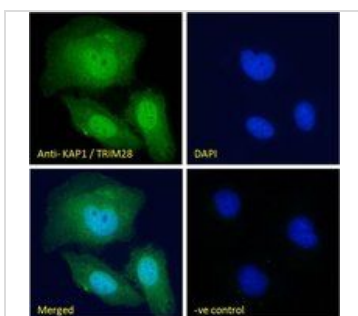
Dilution : 10µg/ml

**GTX89879 IHC-P Image**

IHC-P analysis of human breast using GTX89879 KAP1 antibody, C-term.

Antigen retrieval : Tris/EDTA buffer pH 9

Dilution : 2µg/ml

**GTX89879 ICC/IF Image**

ICC/IF analysis of PFA fixed U2OS cells using GTX89879 KAP1 antibody, C-term.

Green : Primary antibody

Blue : DAPI

Negative control : Unimmunized goat IgG

Permeabilization : 0.15% Triton

Dilution : 10µg/ml



For full product information, images and publications, please visit our [website](#).