



SZABO SCANDIC

Part of Europa Biosite

Produktinformation



Forschungsprodukte & Biochemikalien



Zellkultur & Verbrauchsmaterial



Diagnostik & molekulare Diagnostik



Laborgeräte & Service

Weitere Information auf den folgenden Seiten!
See the following pages for more information!



Lieferung & Zahlungsart

siehe unsere [Liefer- und Versandbedingungen](#)

Zuschläge

- Mindermengenzuschlag
- Trockeneiszuschlag
- Gefahrgutzuschlag
- Expressversand

SZABO-SCANDIC HandelsgmbH

Quellenstraße 110, A-1100 Wien

T. +43(0)1 489 3961-0

F. +43(0)1 489 3961-7

mail@szabo-scandic.com

www.szabo-scandic.com

[linkedin.com/company/szaboscandic](https://www.linkedin.com/company/szaboscandic) 

IRF5 antibody, C-term

Cat No. GTX89902

Host	Goat
Clonality	Polyclonal
Isotype	IgG
Application	WB, ChIP assay, IHC
Reactivity	Human

Package
100 µg

APPLICATION

Application Note

*Optimal dilutions/concentrations should be determined by the researcher.

Suggested dilution	Dilution
WB	0.1-0.3µg/ml
ChIP assay	Assay dependent
IHC	Assay dependent

Not tested in other applications.

Calculated MW 56 kDa. ([Note](#))

Specificity/Sensitivity This antibody is expected to recognize all four reported isoforms (NP_002191.1; NP_116032.1; NP_001092097.1; NP_001092099.1).

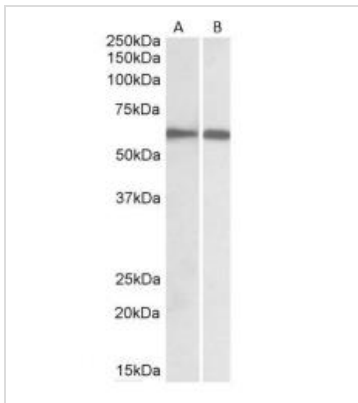
PROPERTIES

Form	Liquid
Buffer	Tris saline pH7.3, 0.02% sodium azide, 0.5% BSA.
Storage	Store as concentrated solution. Centrifuge briefly prior to opening vial. For short-term storage (1-2 weeks), store at 4°C. For long-term storage, aliquot and store at -20°C or below. Avoid multiple freeze-thaw cycles.
Concentration	0.50 mg/ml (Please refer to the vial label for the specific concentration.)
Immunogen	Peptide with sequence C-QGPWPMHPAGMQ, from the C Terminus of the protein sequence according to NP_002191.1; NP_116032.1; NP_001092097.1; NP_001092099.1.
Purification	Purified by ammonium sulphate precipitation followed by antigen affinity chromatography
Conjugation	Unconjugated
Note	For laboratory use only. Not for any clinical, therapeutic, or diagnostic use in humans or animals. Not for animal or human consumption.



For full product information, images and publications, please visit our [website](#).

DATA IMAGES

**GTX89902 WB Image**

WB analysis of human spleen (A) and peripheral blood lymphocytes (B) lysates using GTX89902 IRF5 antibody, C-term.

Dilution : 1 μ g/ml

Loading : 30 μ g protein in RIPA buffer



For full product information, images and publications, please visit our [website](#).