



# SZABO SCANDIC

Part of Europa Biosite

## Produktinformation



Forschungsprodukte & Biochemikalien



Zellkultur & Verbrauchsmaterial



Diagnostik & molekulare Diagnostik



Laborgeräte & Service

Weitere Information auf den folgenden Seiten!  
See the following pages for more information!



### Lieferung & Zahlungsart

siehe unsere [Liefer- und Versandbedingungen](#)

### Zuschläge

- Mindermengenzuschlag
- Trockeneiszuschlag
- Gefahrgutzuschlag
- Expressversand

### SZABO-SCANDIC HandelsgmbH

Quellenstraße 110, A-1100 Wien

T. +43(0)1 489 3961-0

F. +43(0)1 489 3961-7

[mail@szabo-scandic.com](mailto:mail@szabo-scandic.com)

[www.szabo-scandic.com](http://www.szabo-scandic.com)

[linkedin.com/company/szaboscandic](https://www.linkedin.com/company/szaboscandic) 

## ELMO1 antibody, C-term

Cat No. GTX89955

<b>Host</b>	Goat
<b>Clonality</b>	Polyclonal
<b>Isotype</b>	IgG
<b>Application</b>	WB, IP
<b>Reactivity</b>	Human, Mouse, Rat, Zebrafish

Package  
100 µg

## APPLICATION

## Application Note

\*Optimal dilutions/concentrations should be determined by the researcher.

Suggested dilution	Dilution
WB	0.1-0.3µg/ml
IP	Assay dependent

Not tested in other applications.

**Calculated MW** 84 kDa. ( [Note](#) )

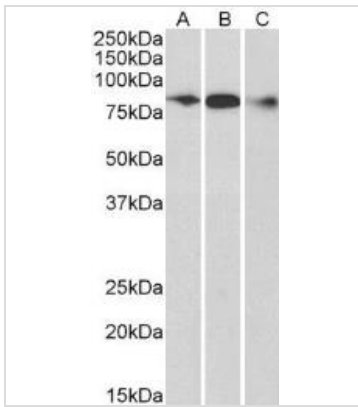
**Specificity/Sensitivity** This antibody is expected to recognise both human isoforms of this protein. NP\_569709.1 and NP\_001034548.1 represent the same isoform.

## PROPERTIES

<b>Form</b>	Liquid
<b>Buffer</b>	Tris saline pH7.3, 0.02% sodium azide, 0.5% BSA.
<b>Storage</b>	Store as concentrated solution. Centrifuge briefly prior to opening vial. For short-term storage (1-2 weeks), store at 4°C. For long-term storage, aliquot and store at -20°C or below. Avoid multiple freeze-thaw cycles.
<b>Concentration</b>	0.50 mg/ml (Please refer to the vial label for the specific concentration.)
<b>Immunogen</b>	Peptide with sequence PKEPSNYDFVYDCN, from the C Terminus of the protein sequence according to NP_055615.8; NP_569709.1; NP_001034548.1.
<b>Purification</b>	Purified by ammonium sulphate precipitation followed by antigen affinity chromatography
<b>Conjugation</b>	Unconjugated
<b>Note</b>	For laboratory use only. Not for any clinical, therapeutic, or diagnostic use in humans or animals. Not for animal or human consumption.



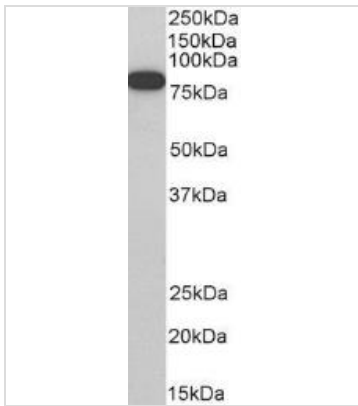
For full product information, images and publications, please visit our [website](#).

**DATA IMAGES**

**GTX89955 WB Image**

WB analysis of human frontal cortex (A), mouse (B) and rat (C) brain lysate using GTX89955 ELMO1 antibody, C-term.

Dilution : 0.3µg/ml

Loading : 35µg protein in RIPA buffer


**GTX89955 WB Image**

WB analysis of Jurkat cell lysate using GTX89955 ELMO1 antibody, C-term.

Dilution : 0.3µg/ml

Loading : 35µg protein in RIPA buffer



For full product information, images and publications, please visit our [website](#).