



SZABO SCANDIC

Part of Europa Biosite

Produktinformation



Forschungsprodukte & Biochemikalien



Zellkultur & Verbrauchsmaterial



Diagnostik & molekulare Diagnostik



Laborgeräte & Service

Weitere Information auf den folgenden Seiten!
See the following pages for more information!



Lieferung & Zahlungsart

siehe unsere [Liefer- und Versandbedingungen](#)

Zuschläge

- Mindermengenzuschlag
- Trockeneiszuschlag
- Gefahrgutzuschlag
- Expressversand

SZABO-SCANDIC HandelsgmbH

Quellenstraße 110, A-1100 Wien

T. +43(0)1 489 3961-0

F. +43(0)1 489 3961-7

mail@szabo-scandic.com

www.szabo-scandic.com

[linkedin.com/company/szaboscandic](https://www.linkedin.com/company/szaboscandic) 

ATF4 antibody, C-term

Cat No. GTX89973

| | |
|--------------------|-------------------|
| Host | Goat |
| Clonality | Polyclonal |
| Isotype | IgG |
| Application | WB |
| Reactivity | Human, Mouse, Rat |

Reference (3)

Package

100 µg

APPLICATION

Application Note

*Optimal dilutions/concentrations should be determined by the researcher.

| Suggested dilution | Dilution |
|--------------------|------------|
| WB | 0.3-1µg/ml |

Not tested in other applications.

Calculated MW 39 kDa. ([Note](#))

Specificity/Sensitivity This antibody is expected to recognize both reported isoforms (NP_001666.2; NP_877962.1).

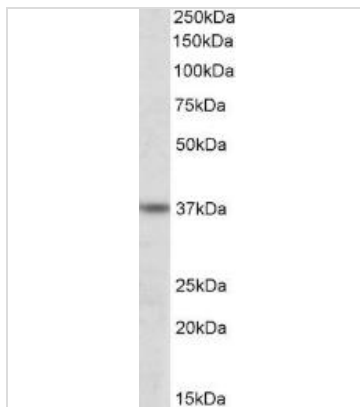
PROPERTIES

| | |
|----------------------|--|
| Form | Liquid |
| Buffer | Tris saline pH7.3, 0.02% sodium azide, 0.5% BSA. |
| Storage | Store as concentrated solution. Centrifuge briefly prior to opening vial. For short-term storage (1-2 weeks), store at 4°C. For long-term storage, aliquot and store at -20°C or below. Avoid multiple freeze-thaw cycles. |
| Concentration | 0.50 mg/ml (Please refer to the vial label for the specific concentration.) |
| Immunogen | Peptide with sequence C-EEVRKARGKKRVP, from the C Terminus of the protein sequence according to NP_001666.2; NP_877962.1. |
| Purification | Purified by ammonium sulphate precipitation followed by antigen affinity chromatography |
| Conjugation | Unconjugated |
| Note | For laboratory use only. Not for any clinical, therapeutic, or diagnostic use in humans or animals. Not for animal or human consumption. |



For full product information, images and publications, please visit our [website](#).

DATA IMAGES

**GTX89973 WB Image**

WB analysis of K562 lysate using GTX89973 ATF4 antibody, C-term.

Dilution : 0.3 μ g/ml

Loading : 35 μ g protein in RIPA buffer



For full product information, images and publications, please visit our [website](#).