



SZABO SCANDIC

Part of Europa Biosite

Produktinformation



Forschungsprodukte & Biochemikalien



Zellkultur & Verbrauchsmaterial



Diagnostik & molekulare Diagnostik



Laborgeräte & Service

Weitere Information auf den folgenden Seiten!
See the following pages for more information!



Lieferung & Zahlungsart

siehe unsere [Liefer- und Versandbedingungen](#)

Zuschläge

- Mindermengenzuschlag
- Trockeneiszuschlag
- Gefahrgutzuschlag
- Expressversand

SZABO-SCANDIC HandelsgmbH

Quellenstraße 110, A-1100 Wien

T. +43(0)1 489 3961-0

F. +43(0)1 489 3961-7

mail@szabo-scandic.com

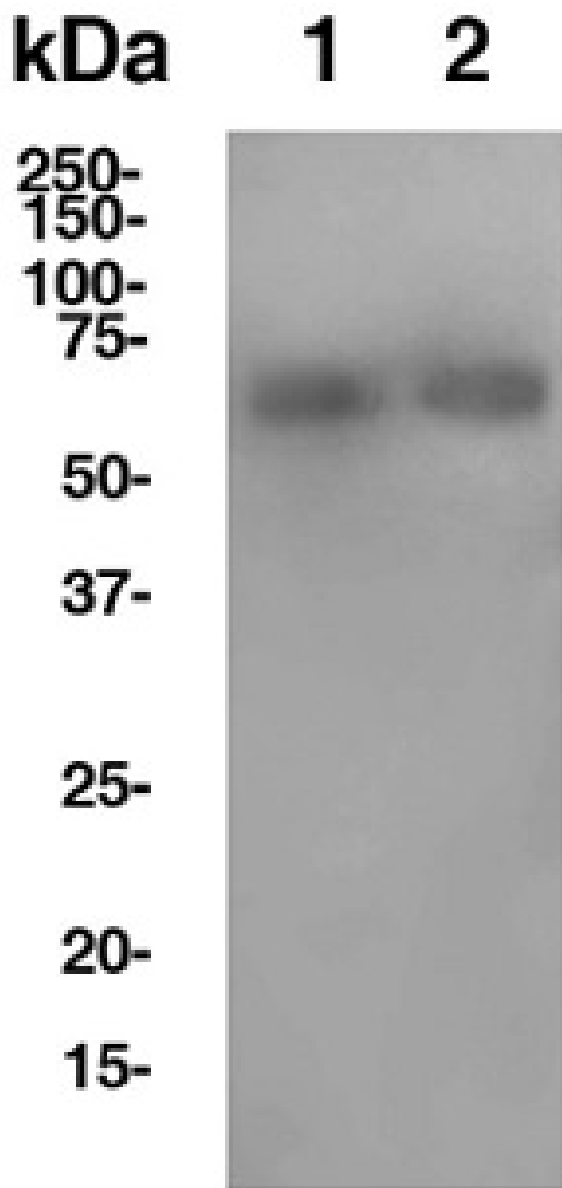
www.szabo-scandic.com

[linkedin.com/company/szaboscandic](https://www.linkedin.com/company/szaboscandic) 

Anti-PD-L2 In Vivo Antibody - Low Endotoxin (3.2) [ICH1031]

SKU: ICH1031

Link: <https://www.ichor.bio/product/anti-pd-l2-in-vivo-antibody-low-endotoxin-3-2-ich1031/>



Product Information

Category: anti-human, anti-mouse, Low Endotoxin

Size: 1mg, 5mg, 25mg, 50mg, 100mg

Endotoxin Level: Low, Ultra low

Product Description

Product Benefits:

ichorbio's anti-PD-L2 In Vivo Antibody - Low Endotoxin (3.2) is manufactured in a cGMP compliant, ISO Quality Standard 9001:2015 facility. ichorbio's low endotoxin antibodies have half the endotoxin of comparable antibodies from our competitors (<http://www.ichor.bio/comparing-ichorbio-to-bio-x-cell-biolegend/>), at less than 1.0 EU/mg. If ichorbio's low endotoxin antibodies are not low enough we also offer ultra low endotoxin antibodies which have even less endotoxin (<0.75EU/mg) at an even higher purity (98% versus 95%). ichorbio offers Amazon vouchers or donations to the NC3Rs for reviews of this product: click [here](http://www.ichor.bio/amazon-vouchers/) (<http://www.ichor.bio/amazon-vouchers/>) for more information. ichorbio: the best antibodies for *in vivo* research.

Target:

PD-L2

Clone:

3.2

Isotype:

Mouse IgG1

Other Names:

Programmed cell death 1 ligand 2, Pcdcl1g2, PD-1 ligand 2, PD-L2, PDCD1 ligand 2, Programmed death ligand 2, Butyrophilin B7-DC, B7-DC, B7dc, Btdc, Pdl2

Uniprot:

[Q9WUL5](https://www.uniprot.org/uniprot/Q9WUL5) (<https://www.uniprot.org/uniprot/Q9WUL5>).

Host:

Mouse

Species Reactivity:

Human

Specificity:

Anti-PD-L2 In Vivo Antibody - Low Endotoxin (3.2) recognizes an epitope on Mouse and Human PD-L2

Purification Method:

This monoclonal antibody was purified using multi-step affinity chromatography methods such as Protein A or G depending on the species and isotype.

Antigen Distribution:

Dendritic cells, liver, few transformed cell lines, subset of macrophages

Background:

PD-L2, is also called programmed death ligand 2 (PDL2). This ligand is a 25 kD type I transmembrane protein and a member of B7 family within the immunoglobulin receptor superfamily and is expressed on a subset of dendritic cells, liver and a small subset of macrophages as well as a few transformed cell lines.

Concentration:

1.0 - 5.0 mg/ml

Formulation:

0.01 M phosphate buffered saline (PBS) pH 7.2, 150 mM NaCl with no carrier protein, potassium or preservatives added. BSA and Azide free.

Purity:

>95% by SDS-PAGE and HPLC

>98% by SDS-PAGE and HPLC

Endotoxin:

≤ 1.0 EU/mg as determined by the LAL method

≤ 0.75 EU/mg as determined by the LAL method

Aggregation:

Aggregation level ≤ 5%

Aggregation level ≤ 1%

Storage:

anti-PD-L2 In Vivo Antibody - Low Endotoxin (3.2) is stable when stored at 2-8°C. For long term storage, aliquot in working volumes without diluting and store at -80°C. Avoid Repeated Freeze Thaw Cycles.

Applications:

Western Blot, Functional Assays

Application Notes:

Each investigator should determine their own optimal working dilution for specific applications.

Use:

Products are for research use only. Not for use in diagnostic or therapeutic procedures.

Isotype Control:

[Mouse IgG1 Isotype Control for In Vivo - Low Endotoxin \[HKSP\]_\(ICH2247\)](http://www.ichor.bio/product/Mouse-IgG1-Isotype-Control-for-In-Vivo-Low-Endotoxin-HKSP-ICH2247)
(<http://www.ichor.bio/product/Mouse-IgG1-Isotype-Control-for-In-Vivo-Low-Endotoxin-HKSP-ICH2247>)

Antibodies against the same target:

[Anti-PD-L2 In Vivo Antibody - Low Endotoxin \[TY25\]_\(ICH1139\)](http://www.ichor.bio/product/Anti-PD-L2-In-Vivo-Antibody-Low-Endotoxin-TY25-ICH1139)
([http://www.ichor.bio/product/Anti-PD-L2-In-Vivo-Antibody-Low-Endotoxin-TY25-](http://www.ichor.bio/product/Anti-PD-L2-In-Vivo-Antibody-Low-Endotoxin-TY25-ICH1139)

ICH1139)