



# SZABO SCANDIC

Part of Europa Biosite

## Produktinformation



Forschungsprodukte & Biochemikalien



Zellkultur & Verbrauchsmaterial



Diagnostik & molekulare Diagnostik



Laborgeräte & Service

Weitere Information auf den folgenden Seiten!  
See the following pages for more information!



### Lieferung & Zahlungsart

siehe unsere [Liefer- und Versandbedingungen](#)

### Zuschläge

- Mindermengenzuschlag
- Trockeneiszuschlag
- Gefahrgutzuschlag
- Expressversand

### SZABO-SCANDIC HandelsgmbH

Quellenstraße 110, A-1100 Wien

T. +43(0)1 489 3961-0

F. +43(0)1 489 3961-7

[mail@szabo-scandic.com](mailto:mail@szabo-scandic.com)

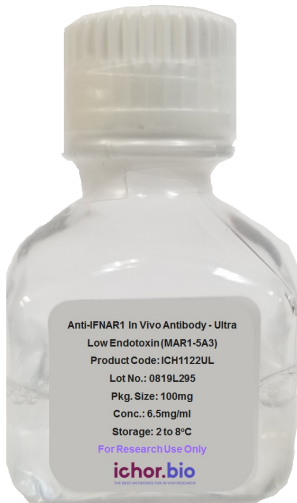
[www.szabo-scandic.com](http://www.szabo-scandic.com)

[linkedin.com/company/szaboscandic](https://www.linkedin.com/company/szaboscandic) 

**Name:** Ipilimumab Biosimilar - Research Grade: HRP

**SKU:** ICH4025HRP

**Categories:** [anti-human](#), [Biosimilar Antibodies](#), [Flow Cytometry](#), [IHC \(Frozen\)](#)



**Product price:** \$350.00

## Product Details

### Ipilimumab Biosimilar - Research Grade: HRP

Unconjugated Product:

[Ipilimumab Biosimilar - Research Grade](#)

Conjugate:

Horse Radish Peroxidase (HRP)

Target:

CTLA-4

Clone:

n/a

Isotype:

IgG1 kappa

Other Names:

Receptor tyrosine-protein kinase erbB-2, MLN 19, HER2, HER2/neu

Host:

CHO Cells

Species Reactivity:

Human

Specificity:

Detects human CTLA-4. This non-therapeutic antibody uses the same variable region sequence as the therapeutic antibody Ipilimumab. Our Ipilimumab biosimilar is for research use only (RUO).

Background:

Ipilimumab is a humanized IgG1 kappa monoclonal antibody that selectively binds with high affinity to the extracellular domain of the human epidermal growth factor receptor 2 protein, HER2. Ipilimumab is produced by recombinant DNA technology in a mammalian cell (Chinese Hamster Ovary).

Concentration:

0.5 mg/ml

Formulation:

This HRP-conjugated antibody is formulated in 0.01 M phosphate buffered saline (150 mM NaCl) PBS pH 7.2 - 7.4, 1% BSA. (Warning: Use of sodium azide as a preservative will inhibit the enzyme activity of horseradish peroxidase).

Storage:

This HRP conjugate is stable when stored at 2-8°C. Do not freeze.

Applications:

Flow Cytometry, ELISA

Application Notes:

Each investigator should determine their own optimal working dilution for specific applications.

Use:

ichorbio's Ipilimumab biosimilar is for research use only (RUO): it is not for diagnostic or therapeutic procedures and cannot be purchased by patients.

Isotype Control:

[Bulk Human IgG1 Isotype Control \(IB1\) \[ICH2254\]](#)

**Additional information:**

Size: [0.1mg](#)