



# SZABO SCANDIC

Part of Europa Biosite

## Produktinformation



Forschungsprodukte & Biochemikalien



Zellkultur & Verbrauchsmaterial



Diagnostik & molekulare Diagnostik



Laborgeräte & Service

Weitere Information auf den folgenden Seiten!  
See the following pages for more information!



### Lieferung & Zahlungsart

siehe unsere [Liefer- und Versandbedingungen](#)

### Zuschläge

- Mindermengenzuschlag
- Trockeneiszuschlag
- Gefahrgutzuschlag
- Expressversand

### SZABO-SCANDIC HandelsgmbH

Quellenstraße 110, A-1100 Wien

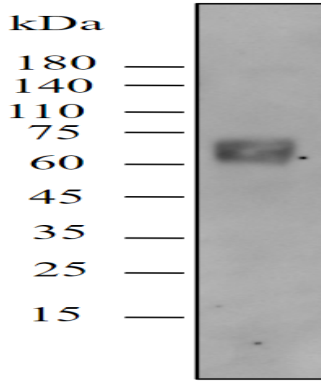
T. +43(0)1 489 3961-0

F. +43(0)1 489 3961-7

[mail@szabo-scandic.com](mailto:mail@szabo-scandic.com)

[www.szabo-scandic.com](http://www.szabo-scandic.com)

[linkedin.com/company/szaboscandic](https://www.linkedin.com/company/szaboscandic) 



## Sintilimab Biosimilar – Research Grade [ICH5001]

### Description

## Sintilimab Biosimilar – Research Grade

#### Product Benefits:

ichorbio's Sintilimab Biosimilar – Research Grade is manufactured in a cGMP compliant facility. This sintilimab biosimilar is for Research Use Only (RUO) and not for therapeutic use. Click [here](#) to view ichorbio's complete list of anti-PD-1 antibodies and biosimilars.

#### Size:

ichorbio's sintilimab biosimilar is available in the following sizes:

1mg, 5mg, 10mg, 20mg, 50mg, 100mg

ichorbio regularly manufactures bulk multi-gram amounts of our sintilimab biosimilar – please contact us for pricing.

#### Target:

PD-1

#### Isotype:

IgG4 kappa

#### Other Names:

Programmed cell death protein 1, Pcd1, CD279

#### Host:

CHO cells

---

### Species Reactivity:

Human

### Specificity:

Detects human PD-1. This non-therapeutic antibody uses the same sequence as the therapeutic antibody Sintilimab.

### Purification Method:

This monoclonal antibody was purified using multi-step affinity chromatography methods such as Protein A or G depending on the species and isotype.

### Background:

Sintilimab biosimilar is a humanized monoclonal antibody that blocks the interaction between PD-1 and its ligands, PD-L1 and PD-L2. It is an IgG4 kappa immunoglobulin with an approximate molecular weight of 149 kDa.

### Concentration:

1.0 – 5.0 mg/ml

### Formulation:

Sterile, preservative-free, clear to milky white colorless to slightly yellow solution, containing L-histidine, polysorbate 80 and sucrose. pH set to 5.5. BSA and Azide free.

### Purity:

>95% by SDS-PAGE and HPLC

### Endotoxin:

? 0.75 EU/mg as determined by the LAL method

### Storage:

Sintilimab Biosimilar – Research Grade is stable for at least four (4) weeks when stored sterile at 2-8°C. For long term storage aseptically aliquot in working volumes without diluting and store at -80°C. Avoid Repeated Freeze Thaw Cycles.

### Applications:

Functional Assays

### Application Notes:

Each investigator should determine their own optimal working dilution for specific applications.

Isotype Control:

[Bulk Human IgG4 Isotype Control \(IB4\) \[ICH2257\]](#)

Use:

ichorbio's sintilimab biosimilar is for research use only (RUO): it is not for diagnostic or therapeutic procedures and cannot be purchased by patients.