



SZABO SCANDIC

Part of Europa Biosite

Produktinformation



Forschungsprodukte & Biochemikalien



Zellkultur & Verbrauchsmaterial



Diagnostik & molekulare Diagnostik



Laborgeräte & Service

Weitere Information auf den folgenden Seiten!
See the following pages for more information!



Lieferung & Zahlungsart

siehe unsere [Liefer- und Versandbedingungen](#)

Zuschläge

- Mindermengenzuschlag
- Trockeneiszuschlag
- Gefahrgutzuschlag
- Expressversand

SZABO-SCANDIC HandelsgmbH

Quellenstraße 110, A-1100 Wien

T. +43(0)1 489 3961-0

F. +43(0)1 489 3961-7

mail@szabo-scandic.com

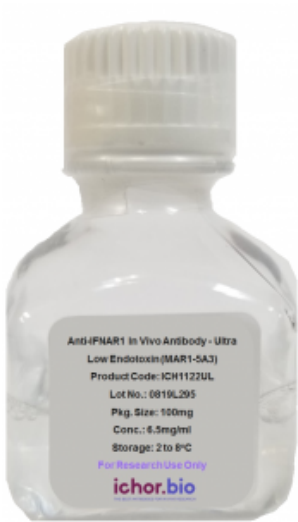
www.szabo-scandic.com

[linkedin.com/company/szaboscandic](https://www.linkedin.com/company/szaboscandic) 

Name: Mosunetuzumab Biosimilar - Research Grade [ICH5026]

SKU: ICH5026

Categories: [anti-human](#), [Biosimilar Antibodies](#), [Low Endotoxin](#)



Product price: \$350.00 – \$9,000.00

Product Details

Mosunetuzumab Biosimilar - Research Grade

Product Details:

ichorbio's mosunetuzumab biosimilar is for Research Use Only (RUO) and not for therapeutic use.

Size:

ichorbio's RUO mosunetuzumab biosimilar is available in the following sizes: 1mg, 5mg, 10mg, 20mg
ichorbio regularly manufactures bulk multi-gram amounts of this biosimilar - please contact us for pricing.

Target:

CD3e/CD20

Isotype:

Bispecific

Other Names:

BTCT4465A

Host:

CHO cells

Species Reactivity:

Human

Specificity:

Detects human CD3/CD20. This non-therapeutic antibody uses the same sequence as mosunetuzumab.

Purification Method:

This recombinant protein was purified using multi-step affinity chromatography methods such as Protein A or G depending on the species and isotype.

Background:

ichorbio's Mosunetuzumab biosimilar is a bispecific, humanized monoclonal antibody with potential antineoplastic activity. Anti-CD20/CD3 bispecific monoclonal antibody BTCT4465A contains two antigen-recognition sites: one for human CD3, a T-cell surface antigen, and one for human CD20, a tumor-associated antigen (TAA) that is exclusively expressed on B cells during most stages of B-cell development and is often overexpressed in B-cell malignancies. Upon administration, BTCT4465A binds to both T cells and CD20-expressing tumor B cells; this cross-links T cells to tumor cells, and may result in a potent cytotoxic T-lymphocyte (CTL) response against CD20-expressing tumor B cells..

Concentration:

1.0 - 5.0 mg/ml

Formulation:

Sterile, preservative-free, solution in PBS. BSA and Azide free.

Purity:

>95% by SDS-PAGE and HPLC

Endotoxin:

? 1.0 EU/mg as determined by the LAL method

Storage:

Mosunetuzumab biosimilar - Research Grade is stable for at least four (4) weeks when stored sterile at 2-8°C. For long term storage aseptically aliquot in working volumes without diluting and store at -80°C. Avoid Repeated Freeze Thaw Cycles.

Applications:

Functional Assays

Application Notes:

Each investigator should determine their own optimal working dilution for specific applications.

Use:

ichorbio's mosunetuzumab biosimilar is for research use only (RUO): it is not for diagnostic or therapeutic procedures and cannot be purchased by patients.

Isotype Control:

[Bulk Human IgG1 Isotype Control \(IB1\) \[ICH2254\]](#)

Additional information:

Size: [1mg](#), [5mg](#), [10mg](#), [20mg](#), [50mg](#), [100mg](#)

Endotoxin Level: Low