



SZABO SCANDIC

Part of Europa Biosite

Produktinformation



Forschungsprodukte & Biochemikalien



Zellkultur & Verbrauchsmaterial



Diagnostik & molekulare Diagnostik



Laborgeräte & Service

Weitere Information auf den folgenden Seiten!
See the following pages for more information!



Lieferung & Zahlungsart

siehe unsere [Liefer- und Versandbedingungen](#)

Zuschläge

- Mindermengenzuschlag
- Trockeneiszuschlag
- Gefahrgutzuschlag
- Expressversand

SZABO-SCANDIC HandelsgmbH

Quellenstraße 110, A-1100 Wien

T. +43(0)1 489 3961-0

F. +43(0)1 489 3961-7

mail@szabo-scandic.com

www.szabo-scandic.com

[linkedin.com/company/szaboscandic](https://www.linkedin.com/company/szaboscandic) 

Recombinant SARS-CoV-2 Spike Protein RBD monomer

LU2020-1MG

PRODUCT INFORMATION

Product Overview	SARS-CoV-2 spike protein RBD monomer.
Modifications	C-terminally extended with Strep and Polyhistidine tags.
Strain	SARS-CoV-2 Betacoronavirus
Isolate (Seq ID)	Wuhan-Hu-1 (GenBank: MN908947)
Expression System	CHOExpress™ cells
Purity	> 90 % as determined by SDS-PAGE.
Conjugate	Strep-His
N-terminus	RVQP
Molecular Weight	The recombinant SARS-CoV-2 spike protein RBD consists of 251 amino acids with a predicted molecular mass of 29 kDa.
Endotoxin	<1.0 EU per µg protein as determined by the LAL method.
Format	Liquid
Concentration	1.0 mg/ml
Buffer	0.01M PBS, pH 7.4
Preservative	None
Storage	Store at -20°C to -80°C. Avoid repeated freeze-thaw cycles.
Ship	Shipped on dry ice

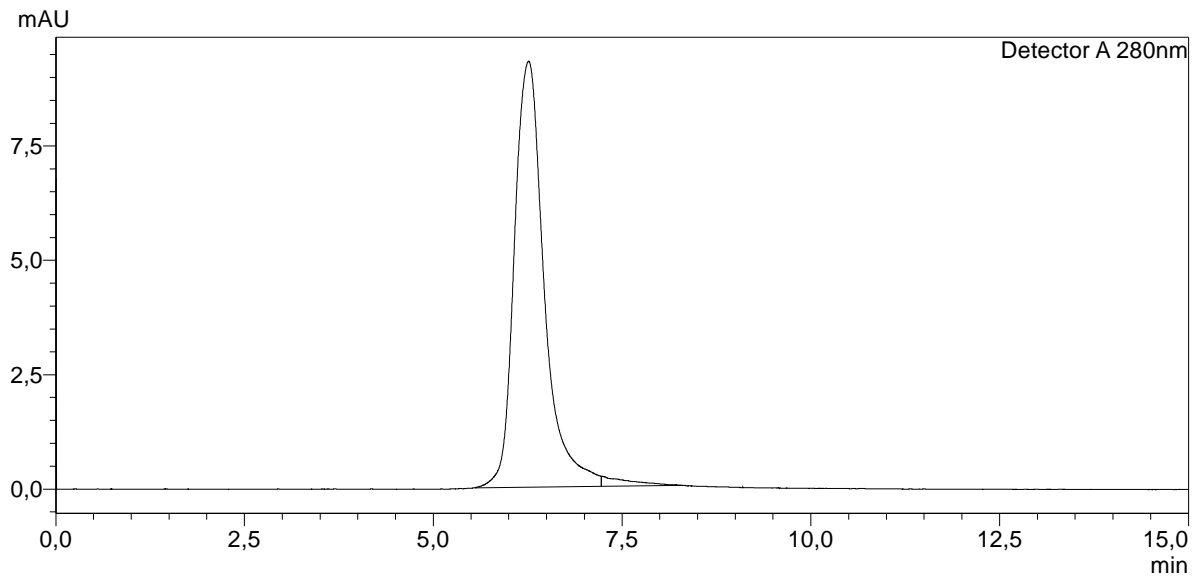


Figure 1. Verification of purity and size of the recombinant SARS-CoV-2 RBD protein monomer under non-denaturing conditions. Size-exclusion chromatography (SEC) plot with peak at 6.4 minutes, corresponding to a size of 29 kDa.

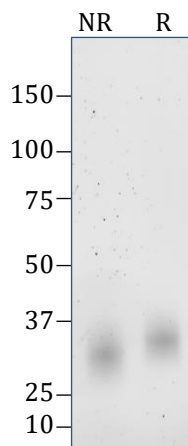


Figure 2. Verification of size and purity of the SARS-CoV-2 spike protein RBD under denaturing conditions, non-reduced (NR) and reduced (R) . SDS-PAGE gel showing a band corresponding to the size of the spike monomer; ~ 29 kD.

This product is for research use only and is not intended for diagnostic use.