



SZABO SCANDIC

Part of Europa Biosite

Produktinformation



Forschungsprodukte & Biochemikalien



Zellkultur & Verbrauchsmaterial



Diagnostik & molekulare Diagnostik



Laborgeräte & Service

Weitere Information auf den folgenden Seiten!
See the following pages for more information!



Lieferung & Zahlungsart

siehe unsere [Liefer- und Versandbedingungen](#)

Zuschläge

- Mindermengenzuschlag
- Trockeneiszuschlag
- Gefahrgutzuschlag
- Expressversand

SZABO-SCANDIC HandelsgmbH

Quellenstraße 110, A-1100 Wien

T. +43(0)1 489 3961-0

F. +43(0)1 489 3961-7

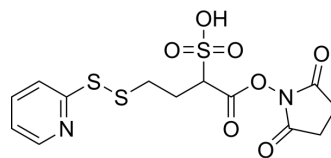
mail@szabo-scandic.com

www.szabo-scandic.com

[linkedin.com/company/szaboscandic](https://www.linkedin.com/company/szaboscandic) 

sulfo-SPDB

Cat. No.:	HY-101151
CAS No.:	1193111-39-5
Molecular Formula:	C ₁₃ H ₁₄ N ₂ O ₇ S ₃
Molecular Weight:	406.45
Target:	ADC Linker
Pathway:	Antibody-drug Conjugate/ADC Related
Storage:	-80°C, protect from light, stored under nitrogen



SOLVENT & SOLUBILITY

In Vitro

DMSO : ≥ 125 mg/mL (307.54 mM)
 * "≥" means soluble, but saturation unknown.

Solvent	Mass	Concentration		
		1 mg	5 mg	10 mg
Preparing Stock Solutions	1 mM	2.4603 mL	12.3016 mL	24.6033 mL
	5 mM	0.4921 mL	2.4603 mL	4.9207 mL
	10 mM	0.2460 mL	1.2302 mL	2.4603 mL

Please refer to the solubility information to select the appropriate solvent.

BIOLOGICAL ACTIVITY

Description	sulfo-SPDB is a cleavable ADC linker used in the synthesis of antibody-drug conjugates (ADCs) ^[1] .	
IC ₅₀ & Target	Disulfide Cleavable	Cleavable
In Vitro	ADCs are comprised of an antibody to which is attached an ADC cytotoxin through an ADC linker ^[1] . MCE has not independently confirmed the accuracy of these methods. They are for reference only.	

REFERENCES

[1]. Beck A, et al. Strategies and challenges for the next generation of antibody-drug conjugates. Nat Rev Drug Discov. 2017 May;16(5):315-337.

Caution: Product has not been fully validated for medical applications. For research use only.

Tel: 609-228-6898

Fax: 609-228-5909

E-mail: tech@MedChemExpress.com

Address: 1 Deer Park Dr, Suite Q, Monmouth Junction, NJ 08852, USA