



SZABO SCANDIC

Part of Europa Biosite

Produktinformation



Forschungsprodukte & Biochemikalien



Zellkultur & Verbrauchsmaterial



Diagnostik & molekulare Diagnostik



Laborgeräte & Service

Weitere Information auf den folgenden Seiten!
See the following pages for more information!



Lieferung & Zahlungsart

siehe unsere [Liefer- und Versandbedingungen](#)

Zuschläge

- Mindermengenzuschlag
- Trockeneiszuschlag
- Gefahrgutzuschlag
- Expressversand

SZABO-SCANDIC HandelsgmbH

Quellenstraße 110, A-1100 Wien

T. +43(0)1 489 3961-0

F. +43(0)1 489 3961-7

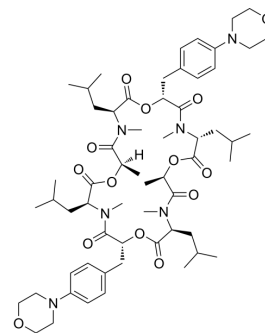
mail@szabo-scandic.com

www.szabo-scandic.com

[linkedin.com/company/szaboscandic](https://www.linkedin.com/company/szaboscandic) 

Emodepside (Standard)

Cat. No.:	HY-101476R
CAS No.:	155030-63-0
Molecular Formula:	C ₆₀ H ₉₀ N ₆ O ₁₄
Molecular Weight:	1119.39
Target:	Parasite
Pathway:	Anti-infection
Storage:	Please store the product under the recommended conditions in the Certificate of Analysis.



BIOLOGICAL ACTIVITY

Description

Emodepside (Standard) is the analytical standard of Emodepside. This product is intended for research and analytical applications. Emodepside (PF 1022-221) is a cyclooctadepsipeptide with broad-spectrum anthelmintic activity.

REFERENCES

- [1]. Harder A, et al. Mechanisms of action of emodepside. *Parasitol Res.* 2005 Oct;97 Suppl 1:S1-10.
- [2]. Buxton SK, et al. On the mode of action of emodepside: slow effects on membrane potential and voltage-activated currents in *Ascaris suum*. *Br J Pharmacol.* 2011 Sep;164(2b):453-70.
- [3]. Kulke D, et al. Characterization of the Ca²⁺-gated and voltage-dependent K⁺-channel Slo-1 of nematodes and its interaction with emodepside. *PLoS Negl Trop Dis.* 2014 Dec 18;8(12):e3401.
- [4]. Bull K, et al. Effects of the novel anthelmintic emodepside on the locomotion, egg-laying behaviour and development of *Caenorhabditis elegans*. *Int J Parasitol.* 2007 May;37(6):627-36.

Caution: Product has not been fully validated for medical applications. For research use only.

Tel: 609-228-6898

Fax: 609-228-5909

E-mail: tech@MedChemExpress.com

Address: 1 Deer Park Dr, Suite Q, Monmouth Junction, NJ 08852, USA