



SZABO SCANDIC

Part of Europa Biosite

Produktinformation



Forschungsprodukte & Biochemikalien



Zellkultur & Verbrauchsmaterial



Diagnostik & molekulare Diagnostik



Laborgeräte & Service

Weitere Information auf den folgenden Seiten!
See the following pages for more information!



Lieferung & Zahlungsart

siehe unsere [Liefer- und Versandbedingungen](#)

Zuschläge

- Mindermengenzuschlag
- Trockeneiszuschlag
- Gefahrgutzuschlag
- Expressversand

SZABO-SCANDIC HandelsgmbH

Quellenstraße 110, A-1100 Wien

T. +43(0)1 489 3961-0

F. +43(0)1 489 3961-7

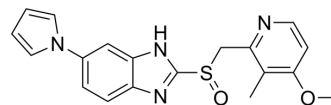
mail@szabo-scandic.com

www.szabo-scandic.com

[linkedin.com/company/szaboscandic](https://www.linkedin.com/company/szaboscandic) 

Ilaprazole (Standard)

Cat. No.:	HY-101664R
CAS No.:	172152-36-2
Molecular Formula:	C ₁₉ H ₁₈ N ₄ O ₂ S
Molecular Weight:	366.44
Target:	Proton Pump; TOPK
Pathway:	Membrane Transporter/Ion Channel; Cell Cycle/DNA Damage
Storage:	Please store the product under the recommended conditions in the Certificate of Analysis.



BIOLOGICAL ACTIVITY

Description	Ilaprazole (Standard) is the analytical standard of Ilaprazole. This product is intended for research and analytical applications. Ilaprazole (IY-81149) is an orally active proton pump inhibitor. Ilaprazole irreversibly inhibits H ⁺ /K ⁺ -ATPase in a dose-dependent manner with an IC ₅₀ of pump inhibitory activity of 6 μM in rabbit parietal cell preparation. Ilaprazole is used for the research of gastric ulcers. Ilaprazole is also a potent TOPK (T-lymphokine-activated killer cell-originated protein kinase) inhibitor ^{[1][2]} .
IC ₅₀ & Target	IC50: 6.0 μM (H ⁺ /K ⁺ -ATPase) ^[1]

REFERENCES

- [1]. Kwon D, et al. Effects of IY-81149, a newly developed proton pump inhibitor, on gastric acid secretion in vitro and in vivo. *Arzneimittelforschung*. 2001;51(3):204-13.
- [2]. Zheng M, et al. Proton pump inhibitor ilaprazole suppresses cancer growth by targeting T-cell-originated protein kinase. *Oncotarget*. 2017;8(24):39143-39153.

Caution: Product has not been fully validated for medical applications. For research use only.

Tel: 609-228-6898

Fax: 609-228-5909

E-mail: tech@MedChemExpress.com

Address: 1 Deer Park Dr, Suite Q, Monmouth Junction, NJ 08852, USA