



# SZABO SCANDIC

Part of Europa Biosite

## Produktinformation



Forschungsprodukte & Biochemikalien



Zellkultur & Verbrauchsmaterial



Diagnostik & molekulare Diagnostik



Laborgeräte & Service

Weitere Information auf den folgenden Seiten!  
See the following pages for more information!



### Lieferung & Zahlungsart

siehe unsere [Liefer- und Versandbedingungen](#)

### Zuschläge

- Mindermengenzuschlag
- Trockeneiszuschlag
- Gefahrgutzuschlag
- Expressversand

### SZABO-SCANDIC HandelsgmbH

Quellenstraße 110, A-1100 Wien

T. +43(0)1 489 3961-0

F. +43(0)1 489 3961-7

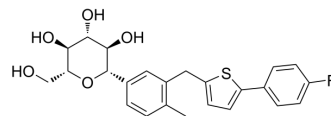
[mail@szabo-scandic.com](mailto:mail@szabo-scandic.com)

[www.szabo-scandic.com](http://www.szabo-scandic.com)

[linkedin.com/company/szaboscandic](https://www.linkedin.com/company/szaboscandic) 

## Canagliflozin (Standard)

Cat. No.:	HY-10451R
CAS No.:	842133-18-0
Molecular Formula:	C <sub>24</sub> H <sub>25</sub> FO <sub>5</sub> S
Molecular Weight:	444.52
Target:	SGLT
Pathway:	Membrane Transporter/Ion Channel
Storage:	Please store the product under the recommended conditions in the Certificate of Analysis.



### BIOLOGICAL ACTIVITY

Description	Canagliflozin (Standard) is the analytical standard of Canagliflozin. This product is intended for research and analytical applications. Canagliflozin (JNJ 28431754) is a selective SGLT2 inhibitor with IC <sub>50</sub> s of 2 nM, 3.7 nM, and 4.4 nM for mSGLT2, rSGLT2, and hSGLT2 in CHOK cells, respectively <sup>[1]</sup> .
IC <sub>50</sub> & Target	IC <sub>50</sub> : 2/3.7/4.4 nM (mSGLT2/rSGLT2/hSGLT2, in CHOK cells) <sup>[1]</sup>

### REFERENCES

[1]. Matsuda H, et al. Roles of capsaicin-sensitive sensory nerves, endogenous nitric oxide, sulfhydryls, and prostaglandins in gastroprotection by momordin Ic, an oleanolic acid oligoglycoside, on ethanol-induced gastric mucosal lesions in rats. *Life Sci.* 1999;65(2):PL27-32.

**Caution: Product has not been fully validated for medical applications. For research use only.**

Tel: 609-228-6898

Fax: 609-228-5909

E-mail: tech@MedChemExpress.com

Address: 1 Deer Park Dr, Suite Q, Monmouth Junction, NJ 08852, USA