



# SZABO SCANDIC

Part of Europa Biosite

## Produktinformation



Forschungsprodukte & Biochemikalien



Zellkultur & Verbrauchsmaterial



Diagnostik & molekulare Diagnostik



Laborgeräte & Service

Weitere Information auf den folgenden Seiten!  
See the following pages for more information!



### Lieferung & Zahlungsart

siehe unsere [Liefer- und Versandbedingungen](#)

### Zuschläge

- Mindermengenzuschlag
- Trockeneiszuschlag
- Gefahrgutzuschlag
- Expressversand

### SZABO-SCANDIC HandelsgmbH

Quellenstraße 110, A-1100 Wien

T. +43(0)1 489 3961-0

F. +43(0)1 489 3961-7

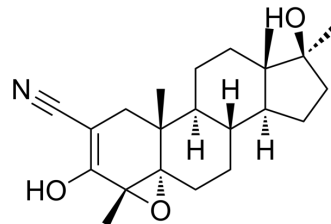
[mail@szabo-scandic.com](mailto:mail@szabo-scandic.com)

[www.szabo-scandic.com](http://www.szabo-scandic.com)

[linkedin.com/company/szaboscandic](https://www.linkedin.com/company/szaboscandic) 

## Epostane

Cat. No.:	HY-105128
CAS No.:	80471-63-2
Molecular Formula:	C <sub>22</sub> H <sub>31</sub> NO <sub>3</sub>
Molecular Weight:	357.49
Target:	Others
Pathway:	Others
Storage:	Please store the product under the recommended conditions in the Certificate of Analysis.



### BIOLOGICAL ACTIVITY

<b>Description</b>	Epostane (WIN 32729) is an orally active inhibitor for 3β-hydroxysteroid dehydrogenase, with IC <sub>50</sub> of 1.45 nM. Epostane blocks ovulation and pregnancy in rats <sup>[1]</sup> .								
<b>In Vivo</b>	<p>Epostane (0-200 mg/kg, p.o., single dose) inhibits ovulation in mature rats and gonadotropin-stimulated ovulation in immature rats, terminates pregnancy through lowering plasma progesterone levels<sup>[1]</sup>. MCE has not independently confirmed the accuracy of these methods. They are for reference only.</p> <table border="1"> <tr> <td>Animal Model:</td> <td>Sprague Dawley rats model<sup>[1]</sup></td> </tr> <tr> <td>Dosage:</td> <td>0-200 mg/kg</td> </tr> <tr> <td>Administration:</td> <td>p.o., single dose</td> </tr> <tr> <td>Result:</td> <td>Terminated ovulation and pregnancy in rats, which was reversed by injections of progesterone.</td> </tr> </table>	Animal Model:	Sprague Dawley rats model <sup>[1]</sup>	Dosage:	0-200 mg/kg	Administration:	p.o., single dose	Result:	Terminated ovulation and pregnancy in rats, which was reversed by injections of progesterone.
Animal Model:	Sprague Dawley rats model <sup>[1]</sup>								
Dosage:	0-200 mg/kg								
Administration:	p.o., single dose								
Result:	Terminated ovulation and pregnancy in rats, which was reversed by injections of progesterone.								

### REFERENCES

[1]. Snyder BW, et al., Inhibition of ovulation in rats with epostane, an inhibitor of 3 beta-hydroxysteroid dehydrogenase. Proc Soc Exp Biol Med. 1984 Jul;176(3):238-42.

**Caution: Product has not been fully validated for medical applications. For research use only.**

Tel: 609-228-6898

Fax: 609-228-5909

E-mail: tech@MedChemExpress.com

Address: 1 Deer Park Dr, Suite Q, Monmouth Junction, NJ 08852, USA