



SZABO SCANDIC

Part of Europa Biosite

Produktinformation



Forschungsprodukte & Biochemikalien



Zellkultur & Verbrauchsmaterial



Diagnostik & molekulare Diagnostik



Laborgeräte & Service

Weitere Information auf den folgenden Seiten!
See the following pages for more information!



Lieferung & Zahlungsart

siehe unsere [Liefer- und Versandbedingungen](#)

Zuschläge

- Mindermengenzuschlag
- Trockeneiszuschlag
- Gefahrgutzuschlag
- Expressversand

SZABO-SCANDIC HandelsgmbH

Quellenstraße 110, A-1100 Wien

T. +43(0)1 489 3961-0

F. +43(0)1 489 3961-7

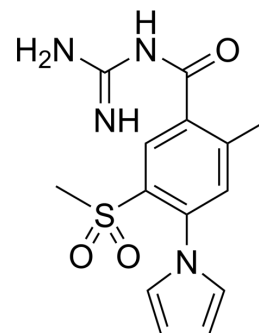
mail@szabo-scandic.com

www.szabo-scandic.com

[linkedin.com/company/szaboscandic](https://www.linkedin.com/company/szaboscandic) 

Eniporide

Cat. No.:	HY-106150
CAS No.:	176644-21-6
Molecular Formula:	C ₁₄ H ₁₆ N ₄ O ₃ S
Molecular Weight:	320.37
Target:	Biochemical Assay Reagents
Pathway:	Others
Storage:	Please store the product under the recommended conditions in the Certificate of Analysis.



BIOLOGICAL ACTIVITY

Description	Eniporide (EMD 96785) is a Na(+)/H(+) exchange (NHE) inhibitor. Eniporide specifically inhibits the NHE-1 isoform. Eniporide improves cardiac performance inhibition associated with myocardial ischemia/reperfusion in animals, and limits infarct size in experimental models. Eniporide regulates cardiac performance and high-energy phosphate content in clinically relevant pig models of CPB and cardiac arrest ^{[1][2]} .
In Vitro	ENIPORIDE is a potent Na ⁺ /H ⁺ exchange inhibitor. MCE has not independently confirmed the accuracy of these methods. They are for reference only.
In Vivo	Eniporide (3 mg/kg; iv; systemic infusion before cardioplegia) improves cardiac performance and high energy phosphate content in healthy pig hearts subjected to ischemia/reperfusion induced by crystalloid cardioplegic arrest ^[1] . MCE has not independently confirmed the accuracy of these methods. They are for reference only.
Animal Model:	Clinically relevant pig models of cardiopulmonary bypass (CPB) and cardioplegia ^[1]
Dosage:	3 mg/kg
Administration:	IV; systemic infusion before cardioplegia with added 2 μM Eniporide or not
Result:	Had no effect on standard hemodynamics including vascular pressures and cardiac index nor for cardiac performance factors. Reduced myocardial edema and improves heart function.

CUSTOMER VALIDATION

- Sci Rep. 2020 Apr 2;10(1):5800.

See more customer validations on www.MedChemExpress.com

REFERENCES

[1]. Zeymer U, et al. The Na(+)/H(+) exchange inhibitor eniporide as an adjunct to early reperfusion therapy for acute myocardial infarction. Results of the evaluation of the safety and cardioprotective effects of eniporide in acute myocardial infarction (ESCAMI) trial. J Am Coll Cardiol. 2001 Nov 15;38(6):1644-50.

[2]. Klass O, et al. Effect of the Na+/H+ exchange inhibitor eniporide on cardiac performance and myocardial high energy phosphates in pigs subjected to cardioplegic arrest. Ann Thorac Surg. 2004 Feb;77(2):658-63.

Caution: Product has not been fully validated for medical applications. For research use only.

Tel: 609-228-6898

Fax: 609-228-5909

E-mail: tech@MedChemExpress.com

Address: 1 Deer Park Dr, Suite Q, Monmouth Junction, NJ 08852, USA