



# SZABO SCANDIC

Part of Europa Biosite

## Produktinformation



Forschungsprodukte & Biochemikalien



Zellkultur & Verbrauchsmaterial



Diagnostik & molekulare Diagnostik



Laborgeräte & Service

Weitere Information auf den folgenden Seiten!  
See the following pages for more information!



### Lieferung & Zahlungsart

siehe unsere [Liefer- und Versandbedingungen](#)

### Zuschläge

- Mindermengenzuschlag
- Trockeneiszuschlag
- Gefahrgutzuschlag
- Expressversand

### SZABO-SCANDIC HandelsgmbH

Quellenstraße 110, A-1100 Wien

T. +43(0)1 489 3961-0

F. +43(0)1 489 3961-7

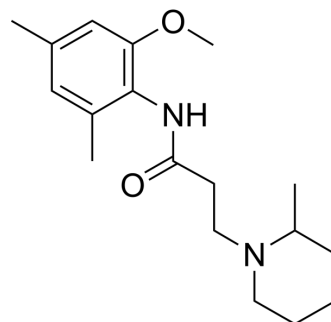
[mail@szabo-scandic.com](mailto:mail@szabo-scandic.com)

[www.szabo-scandic.com](http://www.szabo-scandic.com)

[linkedin.com/company/szaboscandic](https://www.linkedin.com/company/szaboscandic) 

## Vadocaine

Cat. No.:	HY-106495
CAS No.:	72005-58-4
Molecular Formula:	C <sub>18</sub> H <sub>28</sub> N <sub>2</sub> O <sub>2</sub>
Molecular Weight:	304.43
Target:	Others
Pathway:	Others
Storage:	Please store the product under the recommended conditions in the Certificate of Analysis.



### BIOLOGICAL ACTIVITY

Description	Vadocaine (OR K-242), an orally active antitussive compound, is a local anesthetic <sup>[1]</sup> .
In Vivo	<p>In guinea-pigs, Vadocaine (2.5 mg/kg; p.o.) reduces by about 70% the cough episodes induced by sulphur dioxide or ammonia<sup>[1]</sup>.</p> <p>In cats, Vadocaine (3 mg/kg; i.v.) inhibits by about 80% for 10 min the cough reflex initiated by mechanical irritation of the trachea<sup>[1]</sup>.</p> <p>Vadocaine causes local anaesthesia in the guinea-pig wheal preparation at concentrations of 0.25% and 0.5%, and on the guinea-pig cornea at 0.5%<sup>[1]</sup>.</p> <p>MCE has not independently confirmed the accuracy of these methods. They are for reference only.</p>

### REFERENCES

[1]. P T Männistö, et al. Antitussive action of the new anilide derivative vadocaine hydrochloride compared with codeine phosphate in four animal models. *Arzneimittelforschung*. 1988 Apr;38(4A):598-604.

**Caution: Product has not been fully validated for medical applications. For research use only.**

Tel: 609-228-6898

Fax: 609-228-5909

E-mail: tech@MedChemExpress.com

Address: 1 Deer Park Dr, Suite Q, Monmouth Junction, NJ 08852, USA