



SZABO SCANDIC

Part of Europa Biosite

Produktinformation



Forschungsprodukte & Biochemikalien



Zellkultur & Verbrauchsmaterial



Diagnostik & molekulare Diagnostik



Laborgeräte & Service

Weitere Information auf den folgenden Seiten!
See the following pages for more information!



Lieferung & Zahlungsart

siehe unsere [Liefer- und Versandbedingungen](#)

Zuschläge

- Mindermengenzuschlag
- Trockeneiszuschlag
- Gefahrgutzuschlag
- Expressversand

SZABO-SCANDIC HandelsgmbH

Quellenstraße 110, A-1100 Wien

T. +43(0)1 489 3961-0

F. +43(0)1 489 3961-7

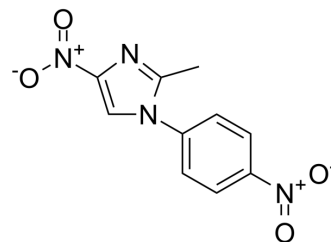
mail@szabo-scandic.com

www.szabo-scandic.com

[linkedin.com/company/szaboscandic](https://www.linkedin.com/company/szaboscandic) 

Nitrefazole

Cat. No.:	HY-107030		
CAS No.:	21721-92-6		
Molecular Formula:	C ₁₀ H ₈ N ₄ O ₄		
Molecular Weight:	248.19		
Target:	Aldehyde Dehydrogenase (ALDH)		
Pathway:	Metabolic Enzyme/Protease		
Storage:	Powder	-20°C	3 years
		4°C	2 years
	In solvent	-80°C	6 months
		-20°C	1 month



SOLVENT & SOLUBILITY

In Vitro	DMSO : 100 mg/mL (402.92 mM; Need ultrasonic)				
		Solvent Concentration	Mass 1 mg	5 mg	10 mg
	Preparing Stock Solutions	1 mM	4.0292 mL	20.1459 mL	40.2917 mL
		5 mM	0.8058 mL	4.0292 mL	8.0583 mL
10 mM		0.4029 mL	2.0146 mL	4.0292 mL	
Please refer to the solubility information to select the appropriate solvent.					
In Vivo	1. Add each solvent one by one: 10% DMSO >> 40% PEG300 >> 5% Tween-80 >> 45% saline Solubility: ≥ 2.5 mg/mL (10.07 mM); Clear solution				
	2. Add each solvent one by one: 10% DMSO >> 90% corn oil Solubility: ≥ 2.5 mg/mL (10.07 mM); Clear solution				

BIOLOGICAL ACTIVITY

Description	Nitrefazole is a 4-nitroimidazole derivative with strong and long lasting inhibition of aldehyde dehydrogenase (ALDH), an enzyme involved in the metabolism of alcohol.
-------------	---

REFERENCES

- [1]. Koda LY, Madamba SG, Bloom FE. Hypotensive response of ethanol in rats pretreated with disulfiram or nitrefazole. Life Sci. 1984;35(16):1659-1665.
- [2]. Zorzano A, Herrera E. Differences in the kinetic properties and sensitivity to inhibitors of human placental, erythrocyte, and major hepatic aldehyde dehydrogenase

Caution: Product has not been fully validated for medical applications. For research use only.

Tel: 609-228-6898

Fax: 609-228-5909

E-mail: tech@MedChemExpress.com

Address: 1 Deer Park Dr, Suite Q, Monmouth Junction, NJ 08852, USA