



SZABO SCANDIC

Part of Europa Biosite

Produktinformation



Forschungsprodukte & Biochemikalien



Zellkultur & Verbrauchsmaterial



Diagnostik & molekulare Diagnostik



Laborgeräte & Service

Weitere Information auf den folgenden Seiten!
See the following pages for more information!



Lieferung & Zahlungsart

siehe unsere [Liefer- und Versandbedingungen](#)

Zuschläge

- Mindermengenzuschlag
- Trockeneiszuschlag
- Gefahrgutzuschlag
- Expressversand

SZABO-SCANDIC HandelsgmbH

Quellenstraße 110, A-1100 Wien

T. +43(0)1 489 3961-0

F. +43(0)1 489 3961-7

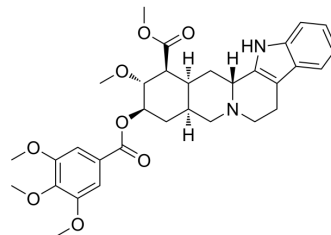
mail@szabo-scandic.com

www.szabo-scandic.com

[linkedin.com/company/szaboscandic](https://www.linkedin.com/company/szaboscandic) 

Deserpidine (Standard)

Cat. No.:	HY-107339R
CAS No.:	131-01-1
Molecular Formula:	C ₃₂ H ₃₈ N ₂ O ₈
Molecular Weight:	578.65
Target:	Angiotensin-converting Enzyme (ACE)
Pathway:	Metabolic Enzyme/Protease
Storage:	Please store the product under the recommended conditions in the Certificate of Analysis.



BIOLOGICAL ACTIVITY

Description	Deserpidine (Standard) is the analytical standard of Deserpidine. This product is intended for research and analytical applications. Deserpidine (Harmony) is an alkaloid isolated from the root of <i>Rauwolfia canescens</i> related to Reserpine. Deserpidine is used as an antihypertensive agent and a tranquilizer. Deserpidine is a competitive angiotensin converting enzyme (ACE) inhibitor. Deserpidine also decreases angiotensin II-induced aldosterone secretion by the adrenal cortex ^{[1][2][3]} .
IC ₅₀ & Target	Angiotensin converting enzyme (ACE) ^[3]

REFERENCES

- [1]. Varchi G, et al. Synthesis of deserpidine from reserpine. *J Nat Prod.* 2005 Nov;68(11):1629-31.
- [2]. Zhang H, et al. Liquid chromatography/tandem mass spectrometry method for the quantification of deserpidine in human plasma: Application to a pharmacokinetic study. *J Chromatogr B Analyt Technol Biomed Life Sci.* 2009 Oct 1;877(27):3221-5.
- [3]. Fulton SC, et al. Comparison of the effectiveness of deserpidine, reserpine, and alpha-methyltyrosine on brain biogenic amines. *Fed Proc.* 1976 Dec;35(14):2558-62.

Caution: Product has not been fully validated for medical applications. For research use only.

Tel: 609-228-6898

Fax: 609-228-5909

E-mail: tech@MedChemExpress.com

Address: 1 Deer Park Dr, Suite Q, Monmouth Junction, NJ 08852, USA