



SZABO SCANDIC

Part of Europa Biosite

Produktinformation



Forschungsprodukte & Biochemikalien



Zellkultur & Verbrauchsmaterial



Diagnostik & molekulare Diagnostik



Laborgeräte & Service

Weitere Information auf den folgenden Seiten!
See the following pages for more information!



Lieferung & Zahlungsart

siehe unsere [Liefer- und Versandbedingungen](#)

Zuschläge

- Mindermengenzuschlag
- Trockeneiszuschlag
- Gefahrgutzuschlag
- Expressversand

SZABO-SCANDIC HandelsgmbH

Quellenstraße 110, A-1100 Wien

T. +43(0)1 489 3961-0

F. +43(0)1 489 3961-7

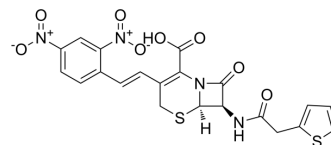
mail@szabo-scandic.com

www.szabo-scandic.com

[linkedin.com/company/szaboscandic](https://www.linkedin.com/company/szaboscandic) 

Nitrocefín (Standard)

Cat. No.:	HY-108913R
CAS No.:	41906-86-9
Molecular Formula:	C ₂₁ H ₁₆ N ₄ O ₈ S ₂
Molecular Weight:	516.5
Target:	Beta-lactamase; Antibiotic
Pathway:	Anti-infection
Storage:	Please store the product under the recommended conditions in the Certificate of Analysis.



BIOLOGICAL ACTIVITY

Description

Nitrocefín (Standard) is the analytical standard of Nitrocefín. This product is intended for research and analytical applications. Nitrocefín is a chromogenic β -lactamase substrate that undergoes a distinctive color change from yellow to red as the amide bond in the β -lactam ring is hydrolyzed by β -lactamase. Nitrocefín is used in competitive inhibition studies in developmental work on β -lactamase-resistant antibiotics^{[1][2][3]}.

REFERENCES

- [1]. Lee M, et al. A practical synthesis of nitrocefín. *J Org Chem.* 2005 Jan 7;70(1):367-9.
- [2]. Worthington RJ, et al. Overcoming resistance to β -lactam antibiotics. *J Org Chem.* 2013 May 3;78(9):4207-13.
- [3]. O'Callaghan CH, et al. Novel method for detection of beta-lactamases by using a chromogenic cephalosporin substrate. *Antimicrob Agents Chemother.* 1972 Apr;1(4):283-8.

Caution: Product has not been fully validated for medical applications. For research use only.

Tel: 609-228-6898

Fax: 609-228-5909

E-mail: tech@MedChemExpress.com

Address: 1 Deer Park Dr, Suite Q, Monmouth Junction, NJ 08852, USA