



# SZABO SCANDIC

Part of Europa Biosite

## Produktinformation



Forschungsprodukte & Biochemikalien



Zellkultur & Verbrauchsmaterial



Diagnostik & molekulare Diagnostik



Laborgeräte & Service

Weitere Information auf den folgenden Seiten!  
See the following pages for more information!



### Lieferung & Zahlungsart

siehe unsere [Liefer- und Versandbedingungen](#)

### Zuschläge

- Mindermengenzuschlag
- Trockeneiszuschlag
- Gefahrgutzuschlag
- Expressversand

### SZABO-SCANDIC HandelsgmbH

Quellenstraße 110, A-1100 Wien

T. +43(0)1 489 3961-0

F. +43(0)1 489 3961-7

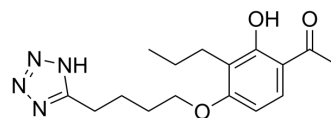
[mail@szabo-scandic.com](mailto:mail@szabo-scandic.com)

[www.szabo-scandic.com](http://www.szabo-scandic.com)

[linkedin.com/company/szaboscandic](https://www.linkedin.com/company/szaboscandic) 

## Tomelukast

Cat. No.:	HY-111212	
CAS No.:	88107-10-2	
Molecular Formula:	C <sub>16</sub> H <sub>22</sub> N <sub>4</sub> O <sub>3</sub>	
Molecular Weight:	318.37	
Target:	Leukotriene Receptor	
Pathway:	GPCR/G Protein	
Storage:	Powder	-20°C 3 years
	In solvent	-80°C 6 months
		-20°C 1 month



### SOLVENT & SOLUBILITY

#### In Vitro

DMSO : 25 mg/mL (78.52 mM; Need ultrasonic and warming)

Concentration	Solvent	Mass		
		1 mg	5 mg	10 mg
Preparing Stock Solutions	1 mM	3.1410 mL	15.7050 mL	31.4100 mL
	5 mM	0.6282 mL	3.1410 mL	6.2820 mL
	10 mM	0.3141 mL	1.5705 mL	3.1410 mL

Please refer to the solubility information to select the appropriate solvent.

### BIOLOGICAL ACTIVITY

#### Description

Tomelukast (LY171883) is an orally active leukotriene D<sub>4</sub> and E<sub>4</sub> antagonist. Tomelukast can be used for the research of asthma<sup>[1]</sup>.

#### IC<sub>50</sub> & Target

leukotriene D<sub>4</sub>, leukotriene E<sub>4</sub><sup>[1]</sup>

### REFERENCES

[1]. Abraham WM, et al. The effect of an orally active leukotriene D<sub>4</sub>/E<sub>4</sub> antagonist, LY171883, on antigen-induced airway responses in allergic sheep. Prostaglandins. 1986 Mar;31(3):457-67.

---

**Caution: Product has not been fully validated for medical applications. For research use only.**

Tel: 609-228-6898

Fax: 609-228-5909

E-mail: [tech@MedChemExpress.com](mailto:tech@MedChemExpress.com)

Address: 1 Deer Park Dr, Suite Q, Monmouth Junction, NJ 08852, USA