



SZABO SCANDIC

Part of Europa Biosite

Produktinformation



Forschungsprodukte & Biochemikalien



Zellkultur & Verbrauchsmaterial



Diagnostik & molekulare Diagnostik



Laborgeräte & Service

Weitere Information auf den folgenden Seiten!
See the following pages for more information!



Lieferung & Zahlungsart

siehe unsere [Liefer- und Versandbedingungen](#)

Zuschläge

- Mindermengenzuschlag
- Trockeneiszuschlag
- Gefahrgutzuschlag
- Expressversand

SZABO-SCANDIC HandelsgmbH

Quellenstraße 110, A-1100 Wien

T. +43(0)1 489 3961-0

F. +43(0)1 489 3961-7

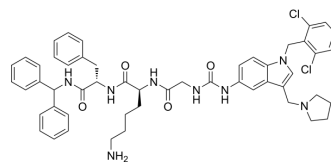
mail@szabo-scandic.com

www.szabo-scandic.com

[linkedin.com/company/szaboscandic](https://www.linkedin.com/company/szaboscandic) 

K-14585

Cat. No.:	HY-111214
CAS No.:	880546-17-8
Molecular Formula:	C ₅₁ H ₅₆ Cl ₂ N ₈ O ₄
Molecular Weight:	915.95
Target:	Protease Activated Receptor (PAR); NF-κB; p38 MAPK
Pathway:	GPCR/G Protein; NF-κB; MAPK/ERK Pathway
Storage:	Please store the product under the recommended conditions in the Certificate of Analysis.



BIOLOGICAL ACTIVITY

Description	K-14585 is a peptide competitive PAR2 antagonist. K-14585 inhibits PAR2-dependent IL-8 production, NF-κB phosphorylation, and p38 signaling. K-14585 reduces SLIGKV (PAR2 agonist peptide)-induced Ca ²⁺ mobilisation in primary human keratinocytes ^{[1][2][3]} .
IC ₅₀ & Target	PAR2

REFERENCES

- [1]. Goh FG, et al. Dual effect of the novel peptide antagonist K-14585 on proteinase-activated receptor-2-mediated signalling. *Br J Pharmacol.* 2009 Dec;158(7):1695-704.
- [2]. Kanke T, et al. Novel antagonists for proteinase-activated receptor 2: inhibition of cellular and vascular responses in vitro and in vivo. *Br J Pharmacol.* 2009 Sep;158(1):361-71.
- [3]. Sevigny LM, et al. Interdicting protease-activated receptor-2-driven inflammation with cell-penetrating pepducins. *Proc Natl Acad Sci U S A.* 2011 May 17;108(20):8491-6.

Caution: Product has not been fully validated for medical applications. For research use only.

Tel: 609-228-6898

Fax: 609-228-5909

E-mail: tech@MedChemExpress.com

Address: 1 Deer Park Dr, Suite Q, Monmouth Junction, NJ 08852, USA