



# SZABO SCANDIC

Part of Europa Biosite

## Produktinformation



Forschungsprodukte & Biochemikalien



Zellkultur & Verbrauchsmaterial



Diagnostik & molekulare Diagnostik



Laborgeräte & Service

Weitere Information auf den folgenden Seiten!  
See the following pages for more information!



### Lieferung & Zahlungsart

siehe unsere [Liefer- und Versandbedingungen](#)

### Zuschläge

- Mindermengenzuschlag
- Trockeneiszuschlag
- Gefahrgutzuschlag
- Expressversand

### SZABO-SCANDIC HandelsgmbH

Quellenstraße 110, A-1100 Wien

T. +43(0)1 489 3961-0

F. +43(0)1 489 3961-7

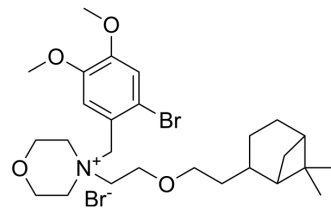
[mail@szabo-scandic.com](mailto:mail@szabo-scandic.com)

[www.szabo-scandic.com](http://www.szabo-scandic.com)

[linkedin.com/company/szaboscandic](https://www.linkedin.com/company/szaboscandic) 

## Pinaverium bromide (Standard)

Cat. No.:	HY-111613R
CAS No.:	53251-94-8
Molecular Formula:	C <sub>26</sub> H <sub>41</sub> Br <sub>2</sub> NO <sub>4</sub>
Molecular Weight:	591.42
Target:	Calcium Channel
Pathway:	Membrane Transporter/Ion Channel; Neuronal Signaling
Storage:	Please store the product under the recommended conditions in the Certificate of Analysis.



### BIOLOGICAL ACTIVITY

Description	Pinaverium bromide (Standard) is the analytical standard of Pinaverium bromide. This product is intended for research and analytical applications. Pinaverium bromide is an L-type calcium channel blocker with selectivity for the gastrointestinal tract, effectively relieves pain, diarrhea and intestinal discomfort, provides good therapeutic efficacies without significant adverse effects on Irritable bowel syndrome (IBS) patients <sup>[1]</sup> .
IC <sub>50</sub> & Target	Calcium channel <sup>[1]</sup> .

### REFERENCES

- [1]. Dai Y, et al. Effect of pinaverium bromide on stress-induced colonic smooth muscle contractility disorder in rats. *World J Gastroenterol.* 2003 Mar;9(3):557-61.
- [2]. Chen X, et al. Pinaverium Bromide Attenuates Lipopolysaccharide-Induced Excessive Systemic Inflammation via Inhibiting Neutrophil Priming. *J Immunol.* 2021 Apr 15;206(8):1858-1865.
- [3]. Dai Y, et al. Effect of pinaverium bromide on stress-induced colonic smooth muscle contractility disorder in rats. *World J Gastroenterol.* 2003 Mar;9(3):557-61.

**Caution: Product has not been fully validated for medical applications. For research use only.**

Tel: 609-228-6898

Fax: 609-228-5909

E-mail: tech@MedChemExpress.com

Address: 1 Deer Park Dr, Suite Q, Monmouth Junction, NJ 08852, USA